



MONOCLONAL ANTIBODY

For research use only. Not for clinical diagnosis

Catalog No. CEC-038

Anti- CAP-H2(Condensin II subunit) antibody

BACKGROUND

CAP-H2 is regulatory subunit of the condensin-2 complex, a complex that seems to provide chromosomes with an additional level of organization and rigidity and in establishing mitotic chromosome architecture.

Product type	Primary antibody
Immunogen	Recombinant GST-fused human CAP-H2(full-length)
Host	Rat
Clone number	5F2G4
Isotype	IgG2a, κ
Source	Culture supernatant
Purification	Ion-exchange chromatography
Form	Liquid
Presentation	Purified monoclonal antibody in PBS, 50% Glycerol, 0.05%w/v ProClin300
Concentration	1 mg/mL
Volume	100 μ L
Label	Unlabeled
Specificity	CAP-H2 (Condensin II subunit)
Cross reactivity	Human, Mouse Other species have not been tested.
Storage	Store below -20°C (below -70°C for prolonged storage) Aliquot to avoid cycles of freeze/thaw.
Other	-

Application notes

Recommended use

WB, ICC, IP Not tested for other applications.

Recommended dilutions

Western blotting, 1/2,000 to 1/10,000

Immunocytochemistry, 1/200 to 1/1,000

Optimal dilutions/concentrations should be determined by the end user.

References

1) Wood et al., (2010) Nat. Rev. Genet., 11, 391-404.

ANTIBODY CHARACTERIZATION

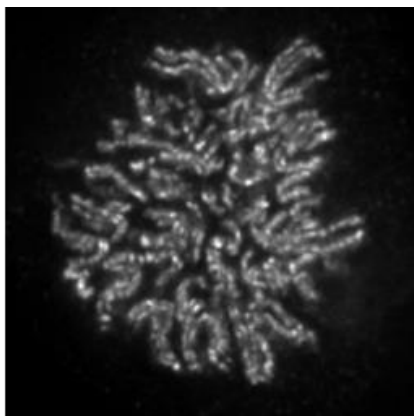


Fig.1 Immunocytochemistry/ Immunofluorescence – CAP-H2 (Condensin II subunit) antibody (5F2G4), HeLa cells

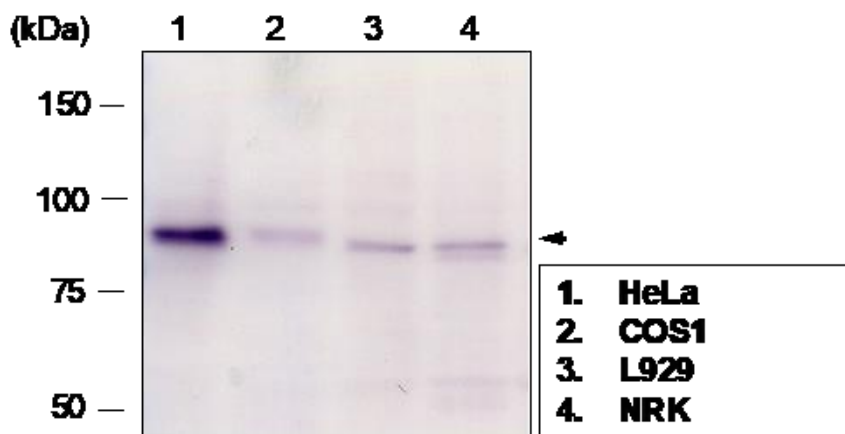


Fig.2 Western blot - CAP-H2 (Condensin II subunit) antibody (5F2G4) , 1.HeLa, 2.Cos1, 3.L929, 4.NRK cell total extracts.

For research use only, Not for diagnostic use.



COSMO BIO Co., LTD.

[JAPAN]
TOYO EKIMAE BLDG. 2-20, TOYO 2-CHOME,
KOTO-KU. TOKYO 135-0016, JAPAN
Phone: +81-3-5632-9610
FAX: +81-3-5632-9619
URL: <https://www.cosmobio.co.jp/>



COSMO BIO USA

[Outside Japan]
2792 Loker Ave West, Suite 101
Carlsbad, CA 92010, USA
email: info@cosmobioussa.com
Phone/FAX: (+1) 760-431-4600
URL: www.cosmobioussa.com