



**MONOCLONAL ANTIBODY**

For research use only. Not for clinical diagnosis

**Catalog No. CEC-034**

**Anti- AATF/Che-1/Traube antibody**

**BACKGROUND**

AATF/Che-1/Traube was identified on the basis of its interaction with MAP3K12/DLK, a protein kinase known to be involved in the induction of cell apoptosis. This protein contains an extremely acidic domain and a putative leucine zipper characteristic of transcription factors.

<b>Product type</b>	Primary antibody
<b>Immunogen</b>	Synthetic peptide corresponding to N-terminal 39 aa of mouse AATF, MAAPQPLALQLEQLLNPRPREADPEADPEEATRARVIDR.
<b>Host</b>	Rat
<b>Clone number</b>	1B2D8
<b>Isotype</b>	IgG2a, $\kappa$
<b>Source</b>	Culture supernatant
<b>Purification</b>	Ion-exchange chromatography
<b>Form</b>	Liquid
<b>Presentation</b>	Purified monoclonal antibody in PBS, 50% Glycerol, 0.05%w/v ProClin300
<b>Concentration</b>	1 mg/mL
<b>Volume</b>	100 $\mu$ L
<b>Label</b>	Unlabeled
<b>Specificity</b>	AATF/Che-1/Traube
<b>Cross reactivity</b>	Human, Mouse, Rat      Other species have not been tested.
<b>Storage</b>	Store below -20°C (below -70°C for prolonged storage) Aliquot to avoid cycles of freeze/thaw.

**Other**

---

<b>Application notes</b>	<b>Recommended use</b> WB, ICC      Not tested for other applications. <b>Recommended dilutions</b> Western blotting, 1/1,000 to 1/5,000 Immunocytochemistry, 1/100 to 1/500  Optimal dilutions/concentrations should be determined by the end user.
<b>References</b>	1) Ishigaki et al., (2010) Cell Death Differ., 17, 774-786..

ANTIBODY CHARACTERIZATION

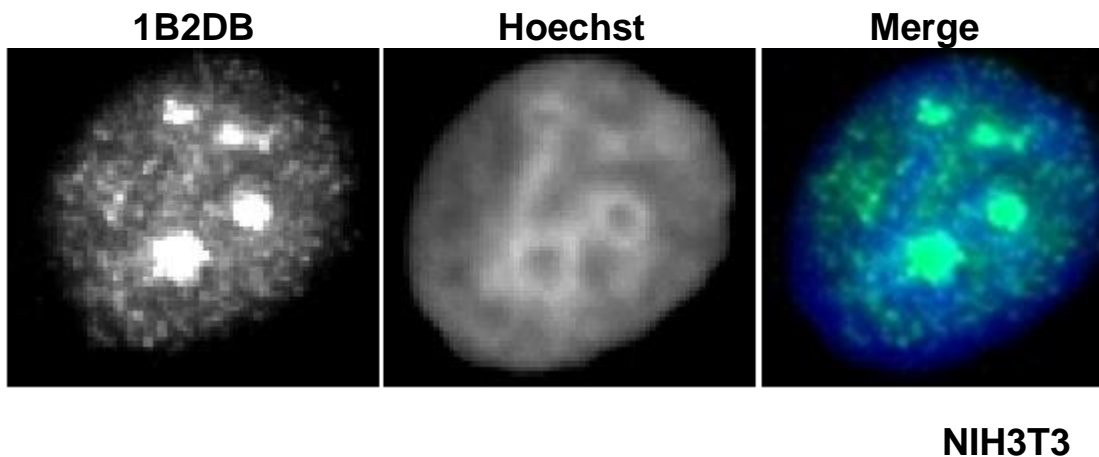


Fig.1 Immunocytochemistry/ Immunofluorescence – AATF/Che-1/Traube antibody(1B2D), NIH3T3(mouse) cells

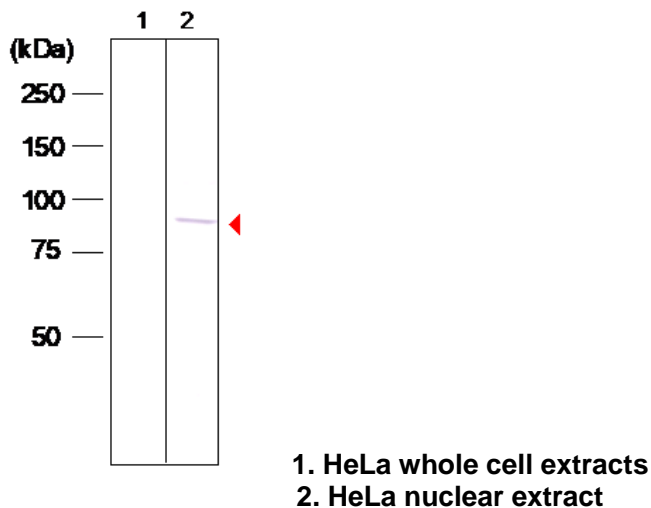


Fig.2 Western blot - AATF/Che-1/Traube antibody (1B2D8) , HeLa cell total and nuclear total extracts.

*For research use only, Not for diagnostic use.*



COSMO BIO Co., LTD.

【JAPAN】  
TOYO EKIMAE BLDG. 2-20, TOYO 2-CHOME,  
KOTO-KU. TOKYO 135-0016, JAPAN  
Phone: +81-3-5632-9610  
FAX: +81-3-5632-9619  
URL: <https://www.cosmobio.co.jp/>



COSMO BIO USA

【Outside Japan】  
2792 Loker Ave West, Suite 101  
Carlsbad, CA 92010, USA  
email: [info@cosmobiousa.com](mailto:info@cosmobiousa.com)  
Phone/FAX: (+1) 760-431-4600  
URL: [www.cosmobiousa.com](http://www.cosmobiousa.com)