



MONOCLONAL ANTIBODY

For research use only. Not for clinical diagnosis

Catalog No. CEC-028

Anti-Nup62/p62 antibody

BACKGROUND

Nup62/p62 is a major component of the NPC (Nuclear pore complex), has been reported to interact directly with several nuclear transport factors, including importin-beta and NTF2.

Product type	Primary antibody
Immunogen	Recombinant GST-fused N-terminus fragment of human Nup62/p62 (aa 1-300)
Host	Rat
Clone number	8A12
Isotype	IgG2a, κ
Source	Culture supernatant
Purification	Ion-exchange chromatography
Form	Liquid
Presentation	Purified monoclonal antibody in PBS, 50% Glycerol, 0.05%w/v ProClin300
Concentration	1 mg/mL
Volume	100 μ L
Label	Unlabeled
Specificity	Nup62/p62
Cross reactivity	Human, Mouse Other species have not been tested.
Storage	Store below -20°C (below -70°C for prolonged storage) Aliquot to avoid cycles of freeze/thaw.
Other	-

Application notes

Recommended use

WB, ICC Not tested for other applications.

Recommended dilutions

Western blotting, 1/1,000 to 1/5,000

Immunocytochemistry, 1/100 to 1/500

Optimal dilutions/concentrations should be determined by the end user.

References

- 1) Fukuhara et al., (2006) Hybridoma, 25, 51-59.
- 2) Maeshima et al., (2006) J. Cell Sci. 119, 4442-4451.

This antibody is used in ref.1 and 2.

ANTIBODY CHARACTERIZATION

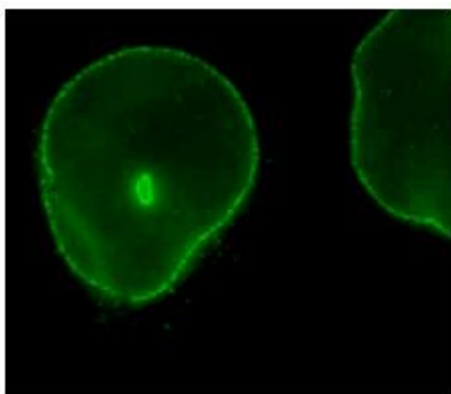


Fig.1 Immunocytochemistry/ Immunofluorescence – Nup62/p62 antibody (8A12), HeLa cells

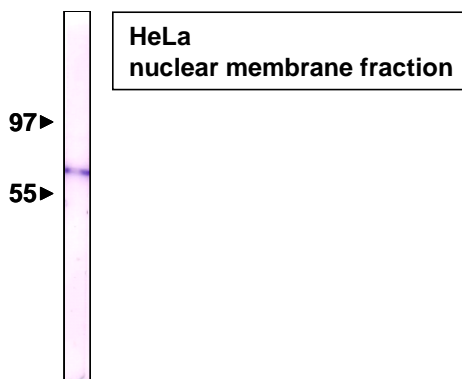


Fig.2 Western blot - Nup62/p62 antibody (8A12) , HeLa cell nuclear membrane fraction

For research use only, Not for diagnostic use.



COSMO BIO Co., LTD.

【JAPAN】

TOYO EKIMAE BLDG. 2-20, TOYO 2-CHOME,
KOTO-KU. TOKYO 135-0016, JAPAN
Phone: +81-3-5632-9610
FAX: +81-3-5632-9619
URL: <https://www.cosmobio.co.jp/>



COSMO BIO USA

【Outside Japan】

2792 Loker Ave West, Suite 101
Carlsbad, CA 92010, USA
email: info@cosmobioussa.com
Phone/FAX: (+1) 760-431-4600
URL: www.cosmobioussa.com