



MONOCLONAL ANTIBODY

For research use only. Not for clinical diagnosis

Catalog No. CEC-025

Anti- Ran antibody

BACKGROUND

Ran (ras-related nuclear protein) is a small GTP binding protein belonging to the RAS superfamily that is essential for the translocation of RNA and proteins through the nuclear pore complex. The Ran protein is also involved in control of DNA synthesis and cell cycle progression.

Product type	Primary antibody
Immunogen	Synthetic peptide corresponding to C-terminal 14 aa of human Ran, VAQTALPDEDDL.
Host	Rat
Clone number	1D6C10
Isotype	IgG2a, κ
Source	Culture supernatant
Purification	Ion-exchange chromatography
Form	Liquid
Presentation	Purified monoclonal antibody in PBS, 50% Glycerol, 0.05%w/v ProClin300
Concentration	1 mg/mL
Volume	100 μ L
Label	Unlabeled
Specificity	Ran
Cross reactivity	Human, Monkey, Mouse, Rat Other species have not been tested.
Storage	Store below -20°C (below -70°C for prolonged storage) Aliquot to avoid cycles of freeze/thaw.
Other	-

Application notes	Recommended use WB, ICC Not tested for other applications. Recommended dilutions Western blotting, 1/1,000 to 1/5,000 Immunocytochemistry, 1/100 to 1/500 Optimal dilutions/concentrations should be determined by the end user.
--------------------------	--

References	1) Güttler and Görlich, (2011) EMBO J., 30, 3457-3474.
-------------------	--

ANTIBODY CHARACTERIZATION

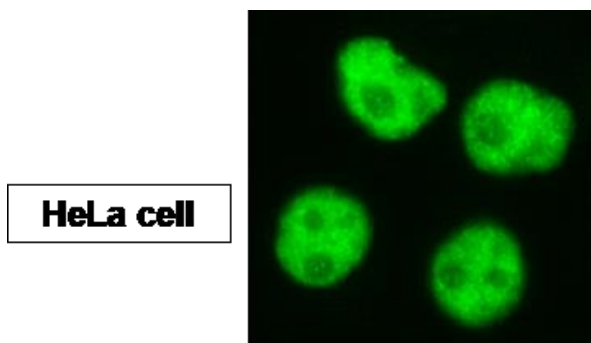


Fig.1 Immunocytochemistry/ Immunofluorescence –Ran antibody (1D6C10), HeLa cells

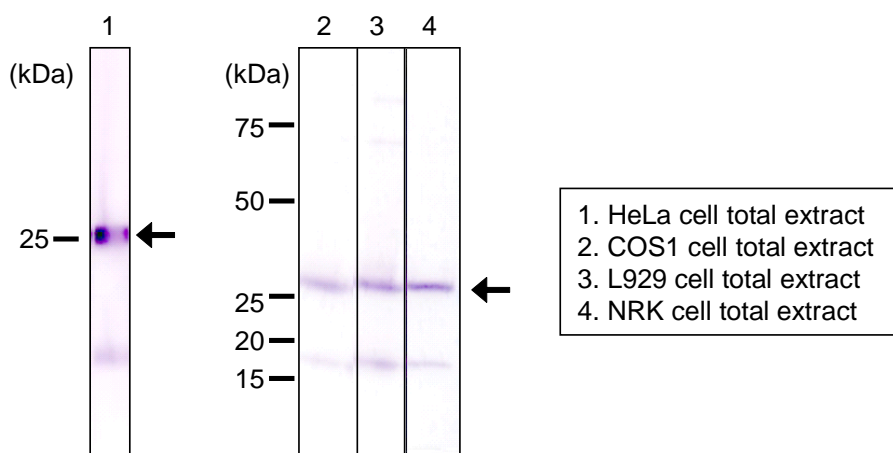


Fig.2 Western blot - Ran antibody (1D6C10)

For research use only, Not for diagnostic use.



COSMO BIO Co., LTD.

【JAPAN】
TOYO EKIMAE BLDG. 2-20, TOYO 2-CHOME,
KOTO-KU. TOKYO 135-0016, JAPAN
Phone: +81-3-5632-9610
FAX: +81-3-5632-9619
URL: <https://www.cosmobio.co.jp/>



COSMO BIO USA

【Outside Japan】
2792 Loker Ave West, Suite 101
Carlsbad, CA 92010, USA
email: info@cosmobioussa.com
Phone/FAX: (+1) 760-431-4600
URL: www.cosmobioussa.com