



MONOCLONAL ANTIBODY

For research use only. Not for clinical diagnosis

Catalog No. CEC-024

Anti- Exportin-5 antibody

BACKGROUND

Exportin-5 (XPO5) mediates the nuclear export of proteins bearing a double-stranded RNA binding domain (dsRBD) and double-stranded RNAs (cargos). XPO5 in the nucleus binds cooperatively to the RNA and to the GTPase Ran in its active GTP-bound form.

Product type	Primary antibody
Immunogen	Synthetic peptide corresponding to C-terminus region (aa 1152-1166) of human Exportin-5, RLIAGCIGKPLGEQF.
Host	Rat
Clone number	1D11
Isotype	IgG2a, κ
Source	Culture supernatant
Purification	Ion-exchange chromatography
Form	Liquid
Presentation	Purified monoclonal antibody in PBS, 50% Glycerol, 0.05%w/v ProClin300
Concentration	1 mg/mL
Volume	100 μ L
Label	Unlabeled
Specificity	Exportin-5 (XPO5)
Cross reactivity	Human Other species have not been tested.
Storage	Store below -20°C (below -70°C for prolonged storage) Aliquot to avoid cycles of freeze/thaw.
Other	-

Application notes

Recommended use

WB, ICC Not tested for other applications.

Recommended dilutions

Western blotting, 1/1,000 to 1/5,000

Immunocytochemistry, 1/100 to 1/500

Optimal dilutions/concentrations should be determined by the end user.

References

1) Katahira and Yoneda, (2011) Traffic, 12, 1468-1474.

ANTIBODY CHARACTERIZATION

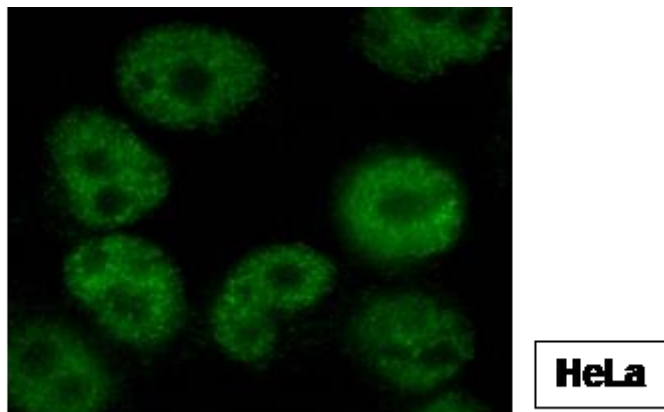


Fig.1 Immunocytochemistry/ Immunofluorescence – Exporin-5 antibody (1D11), HeLa cells

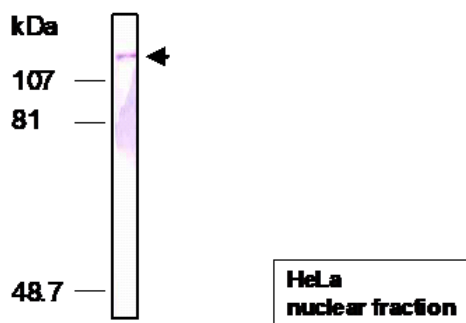


Fig.2 Western blot - Exporin-5 antibody (1D11), HeLa cell nuclear extracts

For research use only, Not for diagnostic use.



COSMO BIO Co., LTD.

【JAPAN】
TOYO EKIMAE BLDG. 2-20, TOYO 2-CHOME,
KOTO-KU, TOKYO 135-0016, JAPAN
Phone: +81-3-5632-9610
FAX: +81-3-5632-9619
URL: <https://www.cosmobio.co.jp/>



COSMO BIO USA

【Outside Japan】
2792 Loker Ave West, Suite 101
Carlsbad, CA 92010, USA
email: info@cosmobiousa.com
Phone/FAX: (+1) 760-431-4600
URL: www.cosmobiousa.com