



MONOCLONAL ANTIBODY

For research use only. Not for clinical diagnosis

Catalog No. CEC-023

Anti-Importin 4 antibody

BACKGROUND

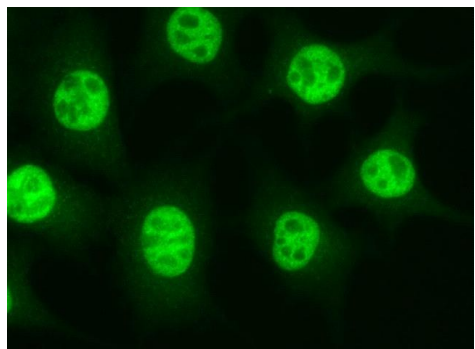
Importin 4 (IPO4), one of nuclear transport receptor, mediates the nuclear import of RPS3A. In vitro, this protein mediates the nuclear import of human cytomegalovirus UL84 by recognizing a non-classical NLS.

Product type	Primary antibody
Immunogen	Recombinant GST-fused mouse importin4 (full length)
Host	Rat
Clone number	3C2
Isotype	IgG2a, κ
Source	Culture supernatant
Purification	Ion-exchange chromatography
Form	Liquid
Presentation	Purified monoclonal antibody in PBS, 50% Glycerol, 0.05%w/v ProClin300
Concentration	1 mg/mL
Volume	100 μ L
Label	Unlabeled
Specificity	Importin 4 (IPO4)
Cross reactivity	Human, Mouse, Rat, Monkey, Hamster Other species have not been tested.
Storage	Store below -20°C (below -70°C for prolonged storage) Aliquot to avoid cycles of freeze/thaw.
Other	-

Application notes	Recommended use WB, ICC Not tested for other applications. Recommended dilutions Western blotting, 1/1,000 to 1/5,000 Immunocytochemistry, 1/100 to 1/500 Optimal dilutions/concentrations should be determined by the end user.
--------------------------	---

References	1) Miyauchi et al., (2005) J. Biol. Chem., 280, 40901-40908. 2) Wang t al., (2010) PNAS, 107, 16131-16136.
-------------------	---

ANTIBODY CHARACTERIZATION



L929

Fig.1 Immunocytochemistry/ Immunofluorescence - Importin4 antibody (3C2), L929 (mouse) cells

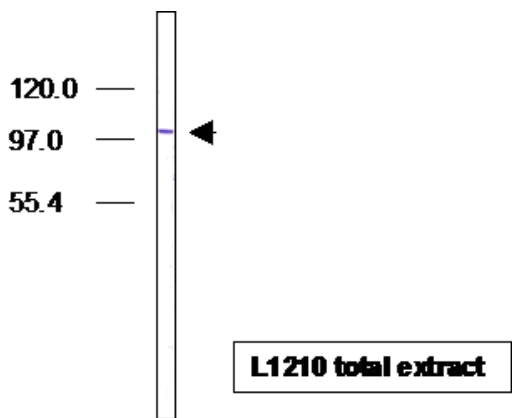


Fig.2 Western blot - Importin4 antibody (3C2), L1210(mouse) cell total extracts

For research use only, Not for diagnostic use.

 <p>COSMO BIO Co., LTD.</p> <p>【JAPAN】 TOYO EKIMAE BLDG. 2-20, TOYO 2-CHOME, KOTO-KU. TOKYO 135-0016, JAPAN Phone: +81-3-5632-9610 FAX: +81-3-5632-9619 URL: https://www.cosmobio.co.jp/</p>	 <p>COSMO BIO USA</p> <p>【Outside Japan】 2792 Loker Ave West, Suite 101 Carlsbad, CA 92010, USA email: info@cosmobiousa.com Phone/FAX: (+1) 760-431-4600 URL: www.cosmobiousa.com</p>
--	--