



## Anti-Importin alpha3/Qip1 antibody

### BACKGROUND

Importin alpha, which mediates the nuclear import of nuclear localization signal (NLS)-containing proteins, is a member of nuclear transport factors. Importin alpha binds directly NLS and functions as an adapter for accessing the importin alpha-dependent import pathway. It has been reported that several isoforms of importin alpha exist in mammals. These importin alpha proteins can be classified into three distinct subfamilies, the Rch1 subfamily (importin alpha1/Rch1), the Qip1 subfamily (importin alpha3/Qip1 and importin alpha4), and the NPI-1 subfamily (importin alpha5/NPI-1 and importin alpha7/S2) based on sequence similarity.

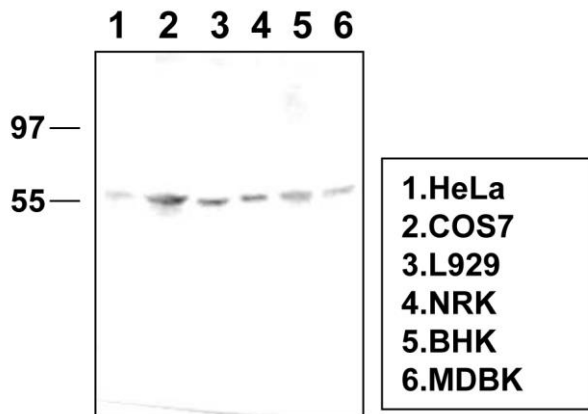
<b>Product type</b>	Primary antibody
<b>Immunogen</b>	Recombinant GST-fused mouse importin alpha3/Qip1 (full length)
<b>Host</b>	Rat
<b>Clone number</b>	3D10
<b>Isotype</b>	IgG2a, $\kappa$
<b>Source</b>	Culture supernatant
<b>Purification</b>	Ion-exchange chromatography
<b>Form</b>	Liquid
<b>Presentation</b>	Purified monoclonal antibody in PBS, 50% Glycerol, 0.05%w/v ProClin300
<b>Concentration</b>	0.5 mg/mL
<b>Volume</b>	200 $\mu$ L
<b>Label</b>	Unlabeled
<b>Specificity</b>	Importin -alpha3/Qip1
<b>Cross reactivity</b>	Human, Mouse, Rat, Monkey, hamster, bovine Other species have not been tested.
<b>Storage</b>	Store below -20°C (below -70°C for prolonged storage) Aliquot to avoid cycles of freeze/thaw.
<b>Other</b>	-

---

<b>Application notes</b>	<b>Recommended use</b> WB Not tested for other applications. <b>Recommended dilutions</b> Western blotting, 1/1,000 to 1/5,000 Optimal dilutions/concentrations should be determined by the end user.
--------------------------	---

<b>References</b>	1) Sakaguchi et al., Hybrid. Hybridomics. 2003 22, 397-400. 2) Yasuhara et al., Nat. Cell Biol. 2007 9, 72-79. This antibody is used in ref.1 and 2.
-------------------	--

## ANTIBODY CHARACTERIZATION



**Fig.1 Western blot - Importin alpha3/Qip1 antibody (3D10)**

*For research use only, Not for diagnostic use.*



**COSMO BIO Co., LTD.**

**【JAPAN】**

TOYO EKIMAE BLDG. 2-20, TOYO 2-CHOME,

KOTO-KU. TOKYO 135-0016, JAPAN

Phone: +81-3-5632-9610

FAX: +81-3-5632-9619

URL: <https://www.cosmobio.co.jp/>



**COSMO BIO USA**

**【Outside Japan】**

2792 Loker Ave West, Suite 101

Carlsbad, CA 92010, USA

email: [info@cosmobiousa.com](mailto:info@cosmobiousa.com)

Phone/FAX: (+1) 760-431-4600

URL: [www.cosmobiousa.com](http://www.cosmobiousa.com)