



MONOCLONAL ANTIBODY

For research use only. Not for clinical diagnosis

Catalog No. CEC-014

Anti-RNA polymerase 2, CTD PAN antibody

BACKGROUND

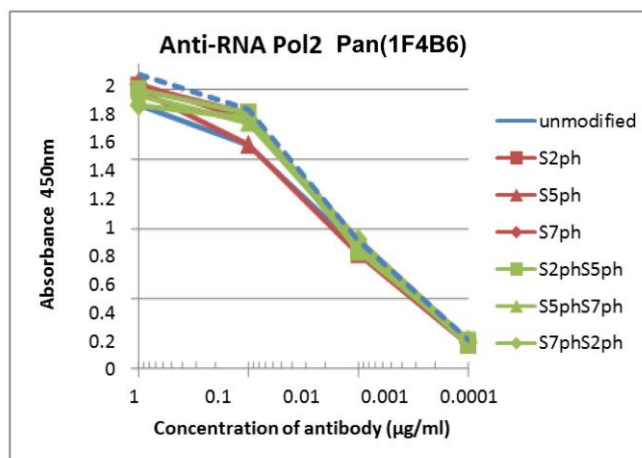
RNA polymerase II (RNAPII) transcribes all protein-coding genes and many non-coding genes, and the activity of RNAPII correlates with the phosphorylation state of RPB1, the large catalytic subunit of RNAPII.. RPB1 has an unusual C-terminal domain (CTD) that consists of repeats of the heptapeptide consensus sequence N-Tyr1-Ser2-Pro3-Thr4-Ser5-Pro6-Ser7-C, of which there are 52 copies in mammals. The amino acids in these repeats are potential targets for modification, such as phosphorylation and glycosylation.

Product type	Primary antibody
Immunogen	Synthetic peptide corresponding to Peptide of RNA Pol II CTD repeat, SPTSPSYSPTSPSYSPTSPS
Host	Rat
Clone number	1F4B6
Isotype	IgG2a, κ
Source	Culture supernatant
Purification	Ion-exchange chromatography
Form	Liquid
Presentation	Purified monoclonal antibody in PBS, 50% Glycerol, 0.05%w/v ProClin300
Concentration	1 mg/mL
Volume	100 μ L
Label	Unlabeled
Specificity	RNA polymerase 2, CTD PAN
Cross reactivity	the mammals
Storage	Store below -20°C (below -70°C for prolonged storage) Aliquot to avoid cycles of freeze/thaw.
Other	-

Application notes	Recommended use WB, ICC Not tested for other applications. Recommended dilutions Western blotting, 1/1,000 to 1/5,000 Immunocytochemistry, 1/100 to 1/500 Optimal dilutions/concentrations should be determined by the end user.
--------------------------	---

References -

ANTIBODY CHARACTERIZATION



unmodified	SPTSPS	YS	PTS	PS	YSPTSPS
S2ph	SPTSPS	YS ^{ph}	PTS	PS	YSPTSPS
S5ph	SPTSPS	YS	PTS ^{ph}	PS	YSPTSPS
S7ph	SPTSPS	YS	PTS	PS ^{ph}	YSPTSPS
S2phS5ph	SPTSPS	YS ^{ph}	PTS ^{ph}	PS	YSPTSPS
S5phS7ph	SPTSPS	YS	PTS ^{ph}	PS ^{ph}	YSPTSPS
S7phS2ph	SPTSPS ^{ph}	YS ^{ph}	PTS	PS	YSPTSPS

Fig.1 The composition of the CTD peptides and the reactivity of RNA polymerase 2, CTD Pan antibody (1F4B6), HeLa cells

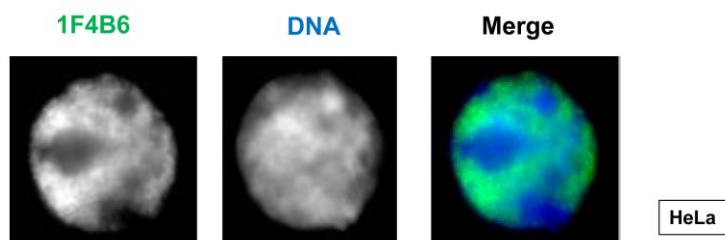


Fig.2 Immunocytochemistry - RNA polymerase 2, CTD Pan antibody (1F4B6), HeLa cells

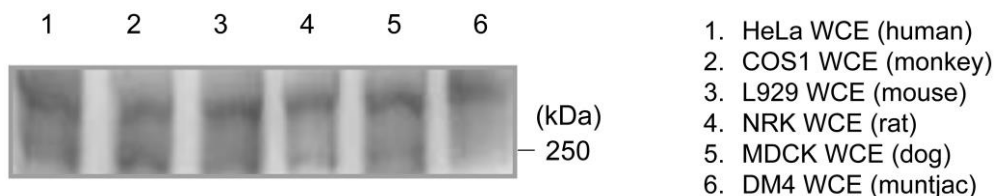


Fig.3 Western blot - RNA polymerase 2, CTD Pan antibody (1F4B6)

For research use only, Not for diagnostic use.



COSMO BIO Co., LTD.

【JAPAN】

TOYO EKIMAE BLDG. 2-20, TOYO 2-CHOME,
KOTO-KU. TOKYO 135-0016, JAPAN
Phone: +81-3-5632-9610
FAX: +81-3-5632-9619
URL: <https://www.cosmobio.co.jp/>



COSMO BIO USA

【Outside Japan】

2792 Loker Ave West, Suite 101
Carlsbad, CA 92010, USA
email: info@cosmobioussa.com
Phone/FAX: (+1) 760-431-4600
URL: www.cosmobioussa.com