



MONOCLONAL ANTIBODY

For research use only. Not for clinical diagnosis

Catalog No. CEC-005

Anti- Histone H3.1/H3.2 [Clone : 6G3C7]

BACKGROUND

Nucleosomes are composed of four different histone proteins, designated H3, H4, H2A, and H2B. Histone H3 has two main variants, H3.1 and H3.3, which show different genomic localization patterns in eukaryotes. Deposition of Histone H3.1 is coupled to DNA synthesis during DNA replication and possibly DNA repair.

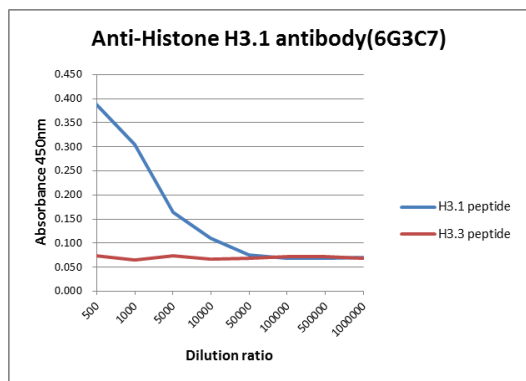
Product type	Primary antibody
Immunogen	Synthetic peptide corresponding to core region (aa 79-97) of human H3.1, KTDLRFQSSAVMALQEASE
Host	Rat
Clone number	6G3C7
Isotype	IgG1, κ
Source	Culture supernatant
Purification	Ion-exchange chromatography
Form	Liquid
Presentation	Purified monoclonal antibody in PBS, 50% Glycerol, 0.05%w/v ProClin300
Concentration	1 mg/mL
Volume	100 μ L
Label	Unlabeled
Specificity	Histone H3.1/3.2, Epitope: Histone H3.1/3.2(79-94) * Human(HeLa), Monkey(COS1), Mouse(NIH3T3), Rat(NRK), Dog(MDCK)
Cross reactivity	Human, Monkey, Mouse, Rat, Hamster Other species have not been tested.
Storage	Store below -20°C (below -70°C for prolonged storage) Aliquot to avoid cycles of freeze/thaw.
Other	Data Link: UniProtKB/Swiss-Prot P68431

Application notes	Recommended use WB Not tested for other applications. Recommended dilutions Western blotting, 1/10000 (Fig.2) Optimal dilutions/concentrations should be determined by the end user.
--------------------------	--

References	1) Hake and Allis, (2006) PNAS, 103, 6428-6435 2) Harada et al., (2012) EMBO J. doi: 10.1038/emboj.2012.136.
-------------------	---

* This antibody is used in ref.2.

ANTIBODY CHARACTERIZATION



H3.1 peptide 79 KTDLRFQSSAVMALQEASEA 97
 H3.3 peptide 79 KTDLRFQSAIIGALQEASEA 97

Fig.1 The composition of Histone H3 variants peptides and the reactivity using Histone H3.1 antibody, 6G3C7.

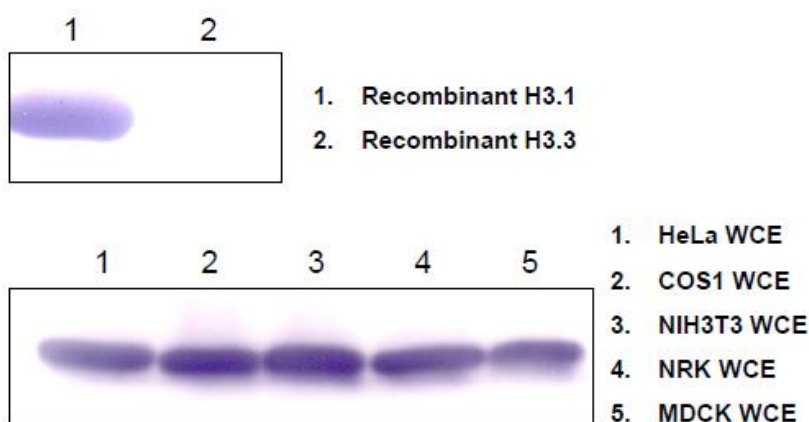


Fig.2 Western blot analysis of recombinant protein and mammalian cell extracts using Histone H3.1 antibody, 6G3C7.

For research use only, Not for diagnostic use.



COSMO BIO Co., LTD.

[JAPAN]
 TOYO EKIMAE BLDG. 2-20, TOYO 2-CHOME,
 KOTO-KU. TOKYO 135-0016, JAPAN
 Phone: +81-3-5632-9610
 FAX: +81-3-5632-9619
 URL: <https://www.cosmobio.co.jp/>



COSMO BIO USA

[Outside Japan]
 2792 Loker Ave West, Suite 101
 Carlsbad, CA 92010, USA
 email: support@cosmobioussa.com
 Phone/FAX: (+1) 760-431-4600
 URL: www.cosmobioussa.com