

MONOCLONAL ANTIBODY

For research use only. Not for clinical diagnosis.

Catalog No. CE-042A

Anti-SUMO2/3 antibody

BACKGROUND

SUMO is Ubiquitin-like protein that can be covalently attached to proteins as a monomer or a lysine-linked polymer. This post-translational modification on lysine residues of proteins plays a crucial role in a number of cellular processes such as nuclear transport, DNA replication and repair, mitosis and signal transduction.

Product type	Primary antibodies
Host	Rat
Source	Culture supernatant
Form	Liquid
	Purified monoclonal antibody in PBS, 50% Glycerol, 0.05% NaN ₃ .
Volume	100 µl
Concentration	1 mg/ml
Specificity	SUMO2 and SUMO3
Antigen	Recombinant GST-fused human SUMO3 (full length).
Clone	3H12
Isotype	IgG2a

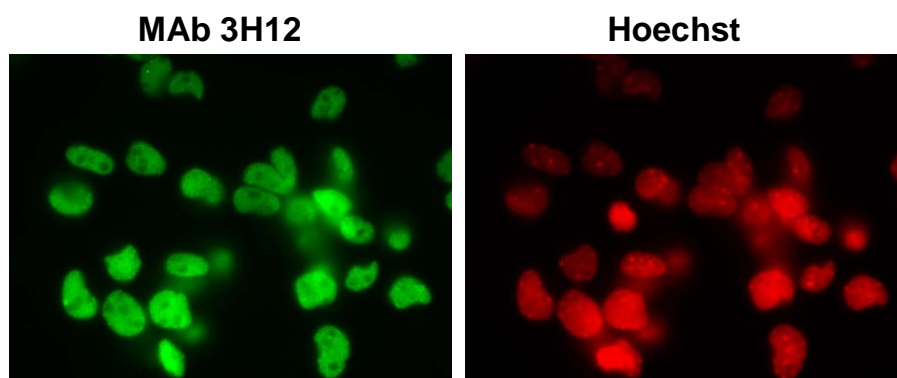
Application notes WB, ICC, IHC Not tested for other applications.

Recommended dilutions

Western blotting, 1/1,000 to 1/5,000

Immunocytochemistry, 1/100 to 1/500

Immunohistochemistry, 1/100 to 1/500



Mouse primary neural progenitor cells

Fig.1 Immunocytochemistry/ Immunofluorescence - SUMO2/3 antibody (3H12)
Mouse primary culture neuron

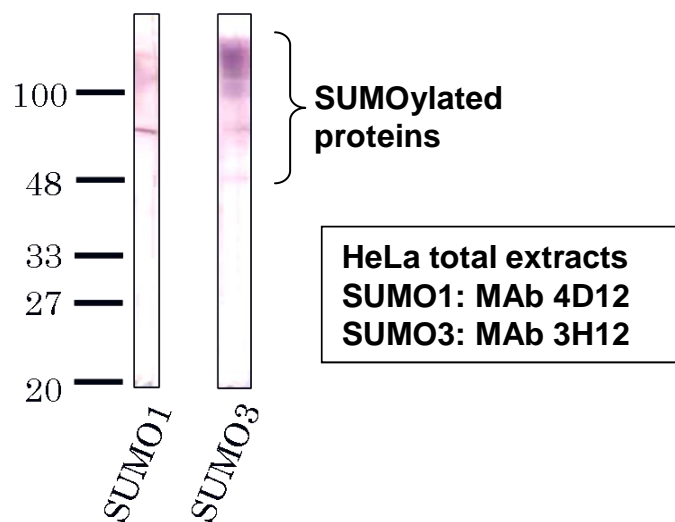


Fig.2 Western blot - SUMO1 antibody (4D12) and SUMO3 antibody (3H12)
HeLa cell total extracts

Optimal dilutions/concentrations should be determined by the end user.

Cross reactivity

Human, Monkey, Mouse, Rat Other species have not been tested.

Storage

Store below -20°C (below -70°C for prolonged storage).

References

1) Saitoh et al.,(2006). Exp Cell Res., 312, 1418-1430.
This antibody is used in ref.1.

For research use only. Not for clinical diagnosis.



COSMO BIO Co., LTD.

【JAPAN】

TOYO EKIMAE BLDG. 2-20, TOYO 2-CHOME,
KOTO-KU. TOKYO 135-0016, JAPAN
Phone: +81-3-5632-9610
FAX: +81-3-5632-9619
URL: <https://www.cosmobio.co.jp/>



COSMO BIO USA

【Outside Japan】

2792 Loker Ave West, Suite 101
Carlsbad, CA 92010, USA
email: info@cosmobiousa.com
Phone/FAX: (+1) 760-431-4600
URL: www.cosmobiousa.com