



Anti CHD2 [Clone : 6D2]

BACKGROUND

CHD2 is a member of the CHD family that contains chromodomain, helicase domain as well as DNA-binding domain. The CHD family is involved in gene expression and transcription by ATP-dependent chromatin remodeling. Analysis of mutant mouse revealed that CHD2 is involved in development as well as hematopoiesis, which suggests the involvement of **CHD2** in gene expression.

Product type	Primary antibody
Immunogen	Recombinant GST-fused fragment of mouse CHD2 (aa 1313-1391).
Raised in	Rat
Myeloma	SP2
Clone number	6D2
Isotype	IgG2a, _k
Host	-
Source	Culture supernatant
Purification	Ion-exchange chromatography
Form	Liquid
Storage buffer	PBS containing 50% Glycerol, 0.05% NaN ₃ as a preservative
Concentration	1 mg / ml
Volume	100 ul
Label	Unlabeled
Specificity	CDH2 Epitope : mouse CHD2 (1313~1383aa)
Cross reactivity	Human, Mouse Other species have not been tested.
Storage	Store below -20°C (below -70°C for prolonged storage) Aliquot to avoid cycles of freeze/thaw.

Application notes	• Western blotting: 1/1000 – 1/5000
Recommended dilutions	• Immunocytochemistry: 1/100 – 1/500
	• Immunohistochemistry: 1/100 – 1/500

Other applications have not been tested.
Optimal dilutions/concentrations should be determined by the end user.

References	1) Harada A, et al. Hybridoma (Larchmt). 2010 Apr;29(2):173-7. PMID: 20443711
-------------------	-----------------------------------------------------------------------------------------------

* This antibody is used in ref.1.

ANTIBODY CHARACTERIZATION

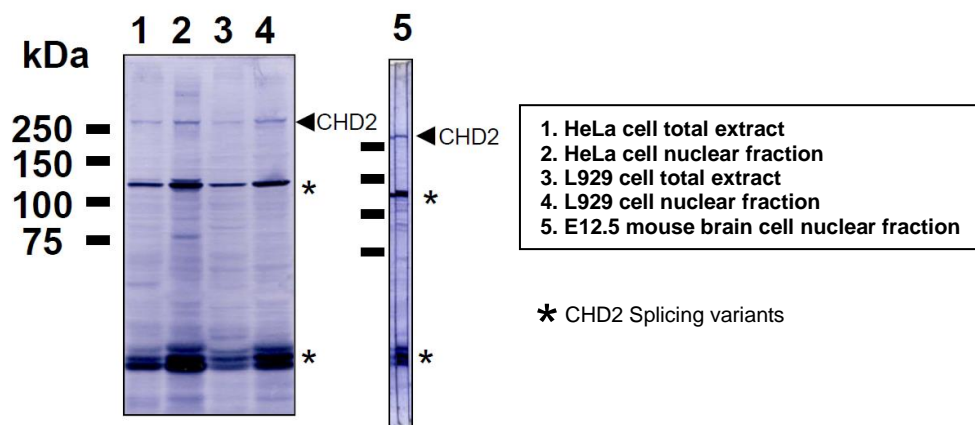


Fig.1 Western blot analysis of HeLa, L929cell and E12.5 mouse brain extracts using CDH2 antibody (6D2).

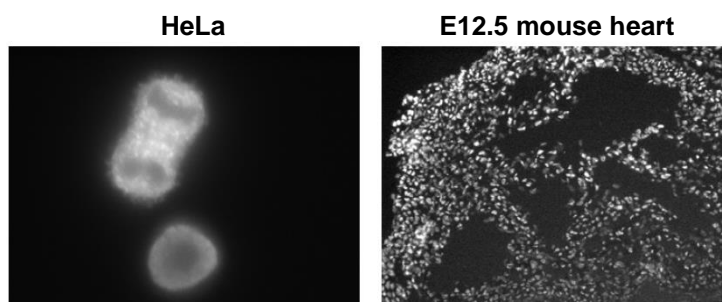


Fig.2 Immunofluorescence analysis of HeLa (left) and E12.5 mouse heart (right) using CHD2 antibody (6D2).

RELATED PRODUCTS:

Product Name	Clone	Application	Maker	Cat#
Anti CHD1 Monoclonal Antibody	2F11H5	WB/ IC/ IHC(f)	CAC	CE-025A
Anti CHD2 Monoclonal Antibody	6D2	WB/ IC/ IHC(f)	CAC	CE-026A
Anti CHD5 Monoclonal Antibody	5A10	WB/ IC/ IHC(f)	CAC	CE-027A
Anti Histone H3.1/3.2 (Variant) Monoclonal Antibody	6G3C7	WB	CAC	CE-039A
Anti Histone H3.1/3.2 (Variant) Monoclonal Antibody	1D4F2	ChIP/ WB/ IC/ IHC/ IP	CAC	CE-039B
Anti Histone H3.3 (Variant) Monoclonal Antibody	6C4A3	WB	CAC	CE-040A
Anti Histone H3.3 (Variant) Monoclonal Antibody	4H2D7	ChIP/ WB/ IC/ IHC/ IP	CAC	CE-040B
Anti Histone H3 S10ph Monoclonal Antibody	6G8B7	WB/ IC	CAC	CE-034A
Anti Histone H3 T11ph Monoclonal Antibody	6G12C5	WB/ IC	CAC	CE-035A
Anti Histone H3 T32ph Monoclonal Antibody	6C7G12	WB/ IC	CAC	CE-036A
Anti Histone H3 K9Ac Monoclonal Antibody	2G1F9	WB/ IC	CAC	CE-037A
Anti RNA polymerase 2, CTD Ser2ph Monoclonal Antibody	3E7C7	ChIP/ WB/ IC	CAC	CE-030A
Anti RNA polymerase 2, CTD Ser5ph Monoclonal Antibody	1H4B6	ChIP/ WB/ IC	CAC	CE-031A

For research use only, Not for diagnostic use.



COSMO BIO Co., LTD.

[JAPAN]

TOYO EKIMAE BLDG. 2-20, TOYO 2-CHOME,
KOTO-KU. TOKYO 135-0016, JAPAN
Phone: +81-3-5632-9610
FAX: +81-3-5632-9619
URL: <https://www.cosmobio.co.jp/>



COSMO BIO USA

[Outside Japan]

2792 Loker Ave West, Suite 101
Carlsbad, CA 92010, USA
email: info@cosmobiousa.com
Phone/FAX: (+1) 760-431-4600
URL: www.cosmobiousa.com