

## MONOCLONAL ANTIBODY

*For research use only. Not for clinical diagnosis.*

**Catalog No. CE-024A Lot No.MA-002**

# Anti-CAP-H2(Condensin II subunit) antibody

## BACKGROUND

CAP-H2 is regulatory subunit of the condensin-2 complex, a complex that seems to provide chromosomes with an additional level of organization and rigidity and in establishing mitotic chromosome architecture.

<b>Product type</b>	Primary antibodies
<b>Host</b>	Rat
<b>Source</b>	Culture supernatant
<b>Form</b>	Liquid
	Purified monoclonal antibody in PBS, 50% Glycerol, 0.05% NaN <sub>3</sub> .
<b>Volume</b>	100 µl
<b>Concentration</b>	1 mg/ml
<b>Specificity</b>	CAP-H2 (Condensin II subunit)
<b>Antigen</b>	Recombinant GST-fused human CAP-H2 (full-length).
<b>Clone</b>	5F2G4
<b>Isotype</b>	IgG2a

**Application notes** WB, ICC, IP Not tested for other applications.

### Recommended dilutions

Western blotting, 1/2,000 to 1/10,000

Immunocytochemistry, 1/200 to 1/1,000

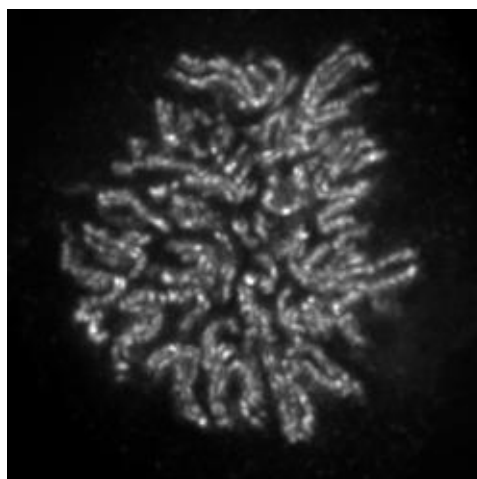


Fig.1 Immunocytochemistry/ Immunofluorescence –  
Condensin II complex, subunit CAP-H2 antibody (5F2G4) , HeLa cell

**Anti-CAP-H2(Condensin II subunit) antibody**

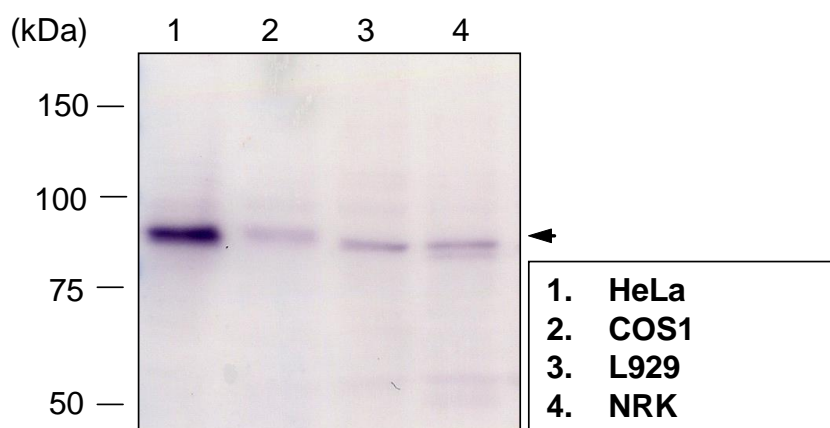


Fig.2 Western blot - Condensin II complex, subunit CAP-H2 antibody (5F2G4)  
1.HeLa, 2.COS1, 3.L929, 4.NRK cell total extracts

Optimal dilutions/concentrations should be determined by the end user.

**Cross reactivity** Human, Mouse Other species have not been tested.

**Storage** Store below -20°C (below -70°C for prolonged storage).

**References** 1) Wood et al., (2010) Nat. Rev. Genet., 11, 391-404.

*For research use only. Not for clinical diagnosis.*



**COSMO BIO Co., LTD.**

**【JAPAN】**

TOYO EKIMAE BLDG. 2-20, TOYO 2-CHOME,  
KOTO-KU. TOKYO 135-0016, JAPAN  
Phone: +81-3-5632-9610  
FAX: +81-3-5632-9619  
URL: <https://www.cosmobio.co.jp/>



**COSMO BIO USA**

**【Outside Japan】**

2792 Loker Ave West, Suite 101  
Carlsbad, CA 92010, USA  
email: [info@cosmobioussa.com](mailto:info@cosmobioussa.com)  
Phone/FAX: (+1) 760-431-4600  
URL: [www.cosmobioussa.com](http://www.cosmobioussa.com)