

MONOCLONAL ANTIBODY

For research use only. Not for clinical diagnosis.

Catalog No. CE-022A

Anti-INI1/BAF47/SNF5 antibody

BACKGROUND

INI1/BAF47/SNF5 is a core component of the BAF (SWI/SNF) complex. This ATP-dependent chromatin-remodeling complex plays important roles in cell proliferation and differentiation, in cellular antiviral activities and inhibition of tumor formation. The BAF complex is able to create a stable, altered form of chromatin that constrains fewer negative supercoils than normal.

Product type	Primary antibodies
Host	Mouse
Source	Culture supernatant
Form	Liquid
	Purified monoclonal antibody in PBS, 50% Glycerol, 0.05% NaN ₃ .
Volume	100 µl
Concentration	1 mg/ml
Specificity	INI1/BAF47/SNF5/SMARCB1
Antigen	Recombinant GST-fused human INI1(full length).
Clone	2C2
Isotype	IgG2a

Application notes WB, ICC, IHC Not tested for other applications.

Recommended dilutions

Western blotting, 1/1,000 to 1/5,000

Immunocytochemistry, 1/500

Immunohistochemistry, 1/100 to 1/500

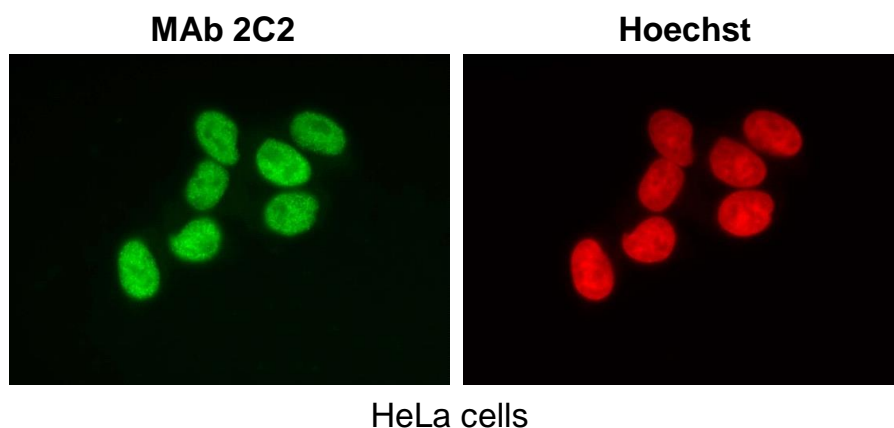


Fig.1 Immunocytochemistry/ Immunofluorescence - Ini1/hSNF5/BAF47 antibody (2C2)
HeLa cells

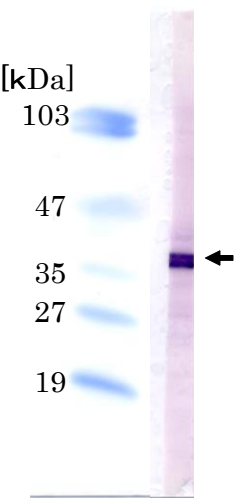


Fig.2 Western blot - Ini1/hSNF5/BAF47 antibody (2C2)
HeLa cell total extracts

Optimal dilutions/concentrations should be determined by the end user.

Cross reactivity Human, Mouse Other species have not been tested.

Storage Store below -20°C (below -70°C for prolonged storage).

References 1) Hollmann and Hornick, (2011) Am J Surg Pathol. 35, e47-63.

For research use only. Not for clinical diagnosis.



COSMO BIO Co., LTD.

【JAPAN】
TOYO EKIMAE BLDG. 2-20, TOYO 2-CHOME,
KOTO-KU. TOKYO 135-0016, JAPAN
Phone: +81-3-5632-9610
FAX: +81-3-5632-9619
URL: <https://www.cosmobio.co.jp/>



COSMO BIO USA

【Outside Japan】
2792 Loker Ave West, Suite 101
Carlsbad, CA 92010, USA
email: info@cosmobiousa.com
Phone/FAX: (+1) 760-431-4600
URL: www.cosmobiousa.com