



MONOCLONAL ANTIBODY

For research use only. Not for clinical diagnosis.

Catalog No. CE-010A

Anti-Nup153 antibody

BACKGROUND

Nup153 is a major component of the NPC (Nuclear pore complex) which is extremely elaborate structure that mediate the regulated movement of macromolecules between the nucleus and cytoplasm.

Product type	Primary antibodies
Host	Rat
Source	Culture supernatant
Form	Liquid
	Purified monoclonal antibody in PBS, 50% Glycerol, 0.05% NaN ₃ .
Volume	100 µl
Concentration	1 mg/ml
Specificity	Nup153
Antigen	Synthetic peptide corresponding to C-terminal 17aa of human Nup153, GTSVSGRGIKTAVRRKK.
Clone	7F9E12
Isotype	IgG2a

Application notes WB, ICC Not tested for other applications.

Recommended dilutions

Western blotting, 1/1,000 to 1/5,000

Immunocytochemistry, 1/100 to 1/500

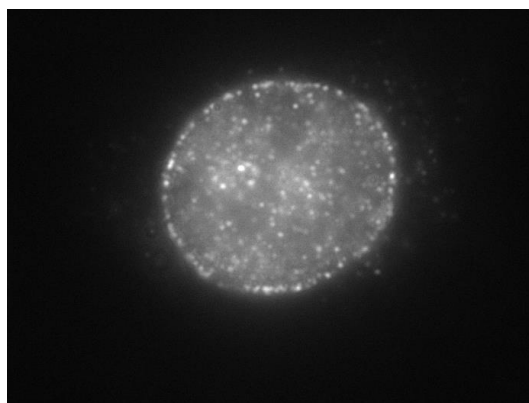


Fig.1 Immunocytochemistry/ Immunofluorescence - Nup153 antibody (7F9E12)
HeLa cells

Optimal dilutions/concentrations should be determined by the end user.

Cross reactivity	Human Other species have not been tested.
Storage	Store below -20°C (below -70°C for prolonged storage).
References	1) Ball and Ullman, (2005) Chromosoma, 114, 319-330.

For research use only. Not for clinical diagnosis.



COSMO BIO Co., LTD.

【JAPAN】

TOYO EKIMAE BLDG. 2-20, TOYO 2-CHOME,
KOTO-KU. TOKYO 135-0016, JAPAN
Phone: +81-3-5632-9610
FAX: +81-3-5632-9619
URL: <https://www.cosmobio.co.jp/>



COSMO BIO USA

【Outside Japan】

2792 Loker Ave West, Suite 101
Carlsbad, CA 92010, USA
email: info@cosmobiousa.com
Phone/FAX: (+1) 760-431-4600
URL: www.cosmobiousa.com