

MONOCLONAL ANTIBODY

For research use only. Not for clinical diagnosis.

Catalog No. CE-007A

Anti-Ran antibody

BACKGROUND

Ran (ras-related nuclear protein) is a small GTP binding protein belonging to the RAS superfamily that is essential for the translocation of RNA and proteins through the nuclear pore complex. The Ran protein is also involved in control of DNA synthesis and cell cycle progression.

Product type	Primary antibodies
Host	Rat
Source	Culture supernatant
Form	Liquid
	Purified monoclonal antibody in PBS, 50% Glycerol, 0.05% NaN ₃ .
Volume	100 µl
Concentration	1 mg/ml
Specificity	Ran
Antigen	Synthetic peptide corresponding to C-terminal 14 aa of human Ran, VAQTTALPDEDDDL.
Clone	1D6C10
Isotype	IgG2a

Application notes WB, ICC Not tested for other applications.

Recommended dilutions

Western blotting, 1/1000 to 1/5000

Immunocytochemistry, 1/100 to 1/500

HeLa cell

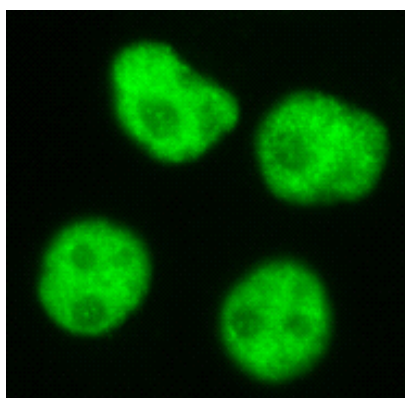


Fig.1 Immunocytochemistry/ Immunofluorescence - Ran antibody (1D6C10)
HeLa cells

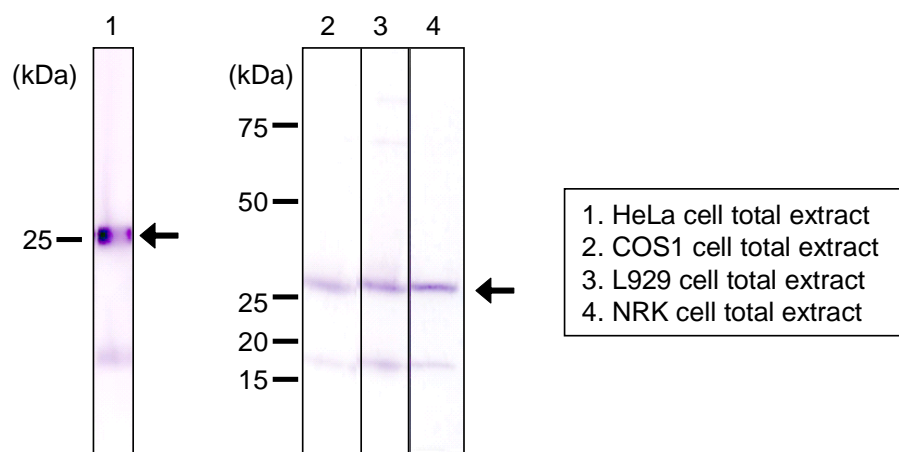


Fig.2 Western blot - Ran antibody (1D6C10)
1.HeLa , 2.COS1(simian), 3.L929(mouse), 4.NRK(rat) cell total extracts

Optimal dilutions/concentrations should be determined by the end user.

Cross reactivity Human, Monkey, Mouse, Rat.

Storage Store below -20°C (below -70°C for prolonged storage).

References 1) Güttler and Görlich, (2011) EMBO J., 30, 3457-3474.

For research use only. Not for clinical diagnosis.



COSMO BIO Co., LTD.

【JAPAN】

TOYO EKIMAE BLDG. 2-20, TOYO 2-CHOME,
KOTO-KU. TOKYO 135-0016, JAPAN
Phone: +81-3-5632-9610
FAX: +81-3-5632-9619
URL: <https://www.cosmobio.co.jp/>



COSMO BIO USA

【Outside Japan】

2792 Loker Ave West, Suite 101
Carlsbad, CA 92010, USA
email: info@cosmobiousa.com
Phone/FAX: (+1) 760-431-4600
URL: www.cosmobiousa.com