

MONOCLONAL ANTIBODY

For research use only. Not for clinical diagnosis.

Catalog No. CE-006A

Anti-Exportin-5 antibody

BACKGROUND

Exportin-5 (XPO5) mediates the nuclear export of proteins bearing a double-stranded RNA binding domain (dsRBD) and double-stranded RNAs (cargos). XPO5 in the nucleus binds cooperatively to the RNA and to the GTPase Ran in its active GTP-bound form.

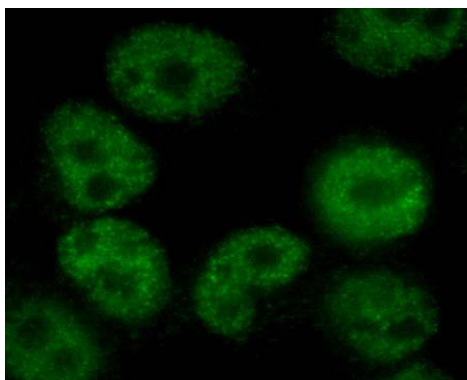
Product type	Primary antibodies
Host	Rat
Source	Culture supernatant
Form	Liquid
	Purified monoclonal antibody in PBS, 50% Glycerol, 0.05% NaN ₃ .
Volume	100 μ l
Concentration	1mg/ml
Specificity	Exportin-5 (XPO5)
Antigen	Synthetic peptide corresponding to C-terminus region (aa 1152-1166) of human Exportin-5, RLIAGCIGKPLGEQF.
Clone	1D11
Isotype	IgG

Application notes WB, ICC Not tested for other applications.

Recommended dilutions

Western blotting, 1/1000 to 1/5000

Immunocytochemistry, 1/100 to 1/500



HeLa

Fig.1 Immunocytochemistry/ Immunofluorescence - Exportin-5 antibody (1D11)
HeLa cells

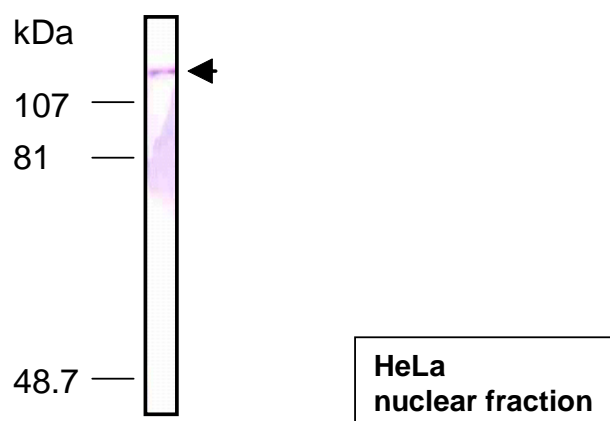


Fig.2 Western blot - Exportin-5 antibody (1D11)
HeLa cell nuclear extracts

Optimal dilutions/concentrations should be determined by the end user.

Cross reactivity

Human Other species have not been tested.

Storage

Store below -20°C (below -70°C for prolonged storage).

References

1) Katahira and Yoneda, (2011) Traffic, 12, 1468-1474.

For research use only. Not for clinical diagnosis.



COSMO BIO Co., LTD.

【JAPAN】

TOYO EKIMAE BLDG. 2-20, TOYO 2-CHOME,
KOTO-KU. TOKYO 135-0016, JAPAN
Phone: +81-3-5632-9610
FAX: +81-3-5632-9619
URL: <https://www.cosmobio.co.jp/>



COSMO BIO USA

【Outside Japan】

2792 Loker Ave West, Suite 101
Carlsbad, CA 92010, USA
email: info@cosmobiousa.com
Phone/FAX: (+1) 760-431-4600
URL: www.cosmobiousa.com