



## MONOCLONAL ANTIBODY

*For research use only. Not for clinical diagnosis.*

**Catalog No. CE-005A**

# Anti-Importin 4 antibody

## BACKGROUND

Importin 4 (IPO4), one of nuclear transport receptor, mediates the nuclear import of RPS3A. In vitro, this protein mediates the nuclear import of human cytomegalovirus UL84 by recognizing a non-classical NLS.

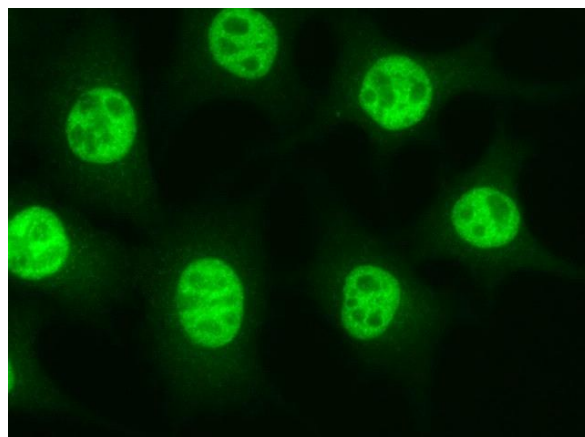
<b>Product type</b>	Primary antibodies
<b>Host</b>	Rat
<b>Source</b>	Culture supernatant
<b>Form</b>	Liquid
<b>Volume</b>	100 $\mu$ l
<b>Concentration</b>	1mg/ml
<b>Specificity</b>	Importin 4 (IPO4)
<b>Antigen</b>	Recombinant GST-fused mouse importin4 (full length).
<b>Clone</b>	3C2
<b>Isotype</b>	IgG2a

**Application notes** WB, ICC Not tested for other applications.

### Recommended dilutions

Western blotting, 1/1000 to 1/5000

Immunocytochemistry, 1/100 to 1/500



**L929**

Fig.1 Immunocytochemistry/ Immunofluorescence  
Importin4 antibody (3C2) L929 (mouse) cells

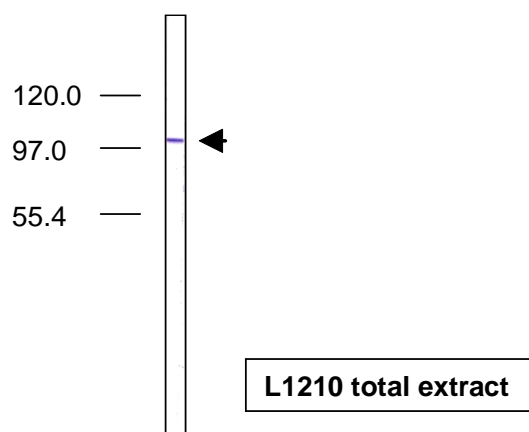


Fig.2 Western blot - Importin4 antibody (3C2)  
L1210 (mouse) cell total extracts

Optimal dilutions/concentrations should be determined by the end user.

**Cross reactivity** Human, Monkey, Mouse, Rat, Hamster

**Storage** Store below -20°C (below -70°C for prolonged storage).

**References**  
 1) Miyauchi et al., (2005) J. Biol. Chem., 280, 40901-40908.  
 2) Wang t al., (2010) PNAS, 107, 16131-16136.

*For research use only. Not for clinical diagnosis.*



**COSMO BIO Co., LTD.**

【JAPAN】

TOYO EKIMAE BLDG. 2-20, TOYO 2-CHOME,  
KOTO-KU. TOKYO 135-0016, JAPAN  
Phone: +81-3-5632-9610  
FAX: +81-3-5632-9619  
URL: <https://www.cosmobio.co.jp/>



**COSMO BIO USA**

【Outside Japan】

2792 Loker Ave West, Suite 101  
Carlsbad, CA 92010, USA  
email: [info@cosmobiousa.com](mailto:info@cosmobiousa.com)  
Phone/FAX: (+1) 760-431-4600  
URL: [www.cosmobiousa.com](http://www.cosmobiousa.com)