



MONOCLONAL ANTIBODY

For research use only. Not for diagnostic use.

Catalog No. SHI-EXO-M02

Anti CD63 [Clone : 8A12]

BACKGROUND

CD63 (also known as LAMP-3, Melanoma-associated antigen ME491, TSPAN30, MLA1 and OMA81H) is a cell surface glycoprotein which belongs to the tetraspanin superfamily. CD63 is known to complex with integrins. CD63 is expressed on activated platelets, monocytes and macrophages, and is weakly expressed on granulocytes, T cell and B cells.

Product type	Primary antibody
Immunogen	Human CD63 (a.a. 104-202)
Raised in	Mouse
Myeloma	-
Clone number	8A12
Isotype	IgG2a
Source	Culture supernatant
Purification	Affinity purified by Protein G
Buffer	Phosphate buffered saline containing 0.1% NaN ₃ as a preservative
Concentration	1 mg / mL
Volume	100 uL
Label	Unlabeled
Specificity	Human CD63
Reactivity	Human. No cross-reactivity with Rat and Mouse; Other species are not tested.
Storage	Store below - 40°C Aliquot to avoid cycles of freeze/thaw.

Application notes	<ul style="list-style-type: none">• Western blotting: 1/500 - 1/2,000 (0.5 - 2ug/mL, non-reductive condition)
Recommended dilutions	<ul style="list-style-type: none">• Immunoprecipitation: 1/200 – 1/1,000 (1- 5ug/mL) * Experiment example : Serum Exosome• ELISA: 1/500 – 1/200,000 (5ng/mL - 0.5ug/mL)• Flow cytometry: 1/100~1/1,000 (1- 10ug/mL) * Experiment example : Serum and Culture supernatant Exosome• Immunofluorescence: 1/100~1/1,000 (1- 10ug/mL)• Electron microscopy

Other applications have not been tested.
Optimal dilutions/concentrations should be determined by the end user.

References	<ul style="list-style-type: none">• Nishida-Aoki N <i>et al.</i>, <i>Mol Ther.</i> 2017 Jan 4;25(1):181-191. PMID: 28129113• Yoshioka Y <i>et al.</i>, <i>Nat Commun.</i> 2014 Apr 7;5:3591. PMID: 24710016• Saito S <i>et al.</i>, <i>Sci Rep.</i> 2018 Mar 5;8(1):3997. PMID: 29507392
-------------------	--

ANTIBODY CHARACTERIZATION

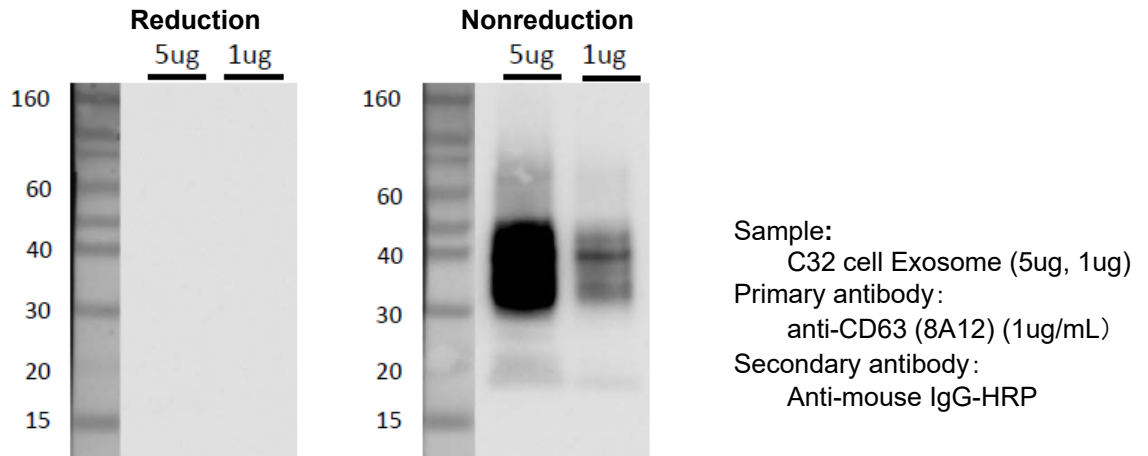


Fig.1 Western blot analysis of CD63 in C32 cell Exosome with anti-CD63 (8A12) antibody

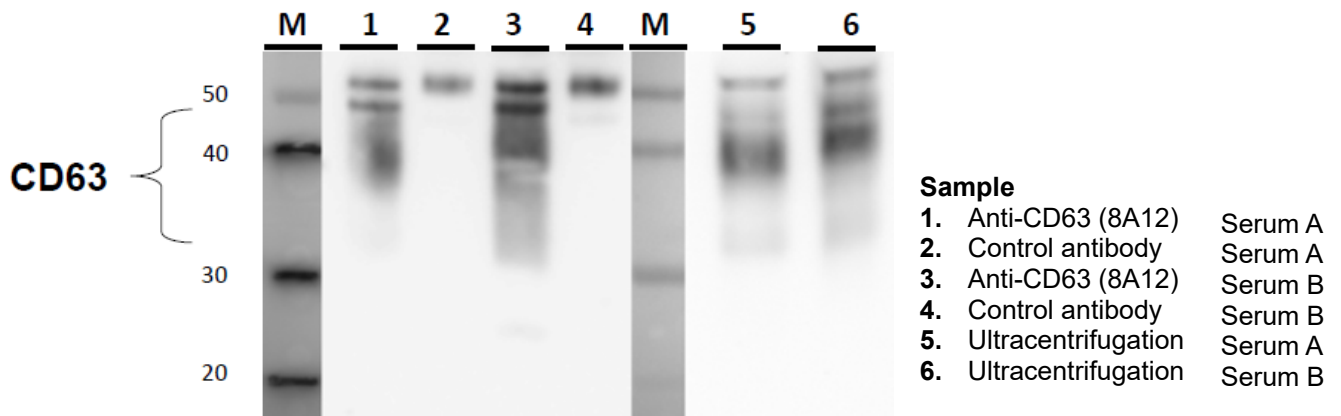
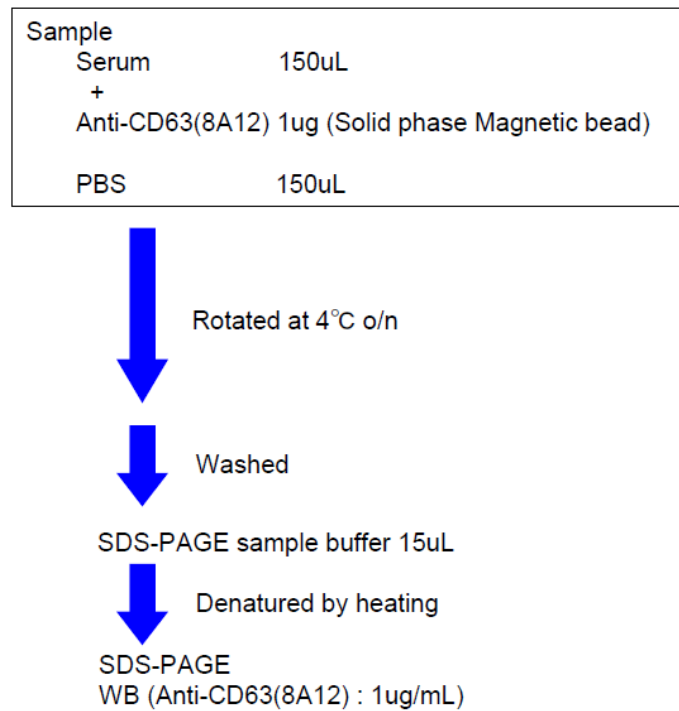


Fig.2 Immunoprecipitation in Human serum exosome

Protocol



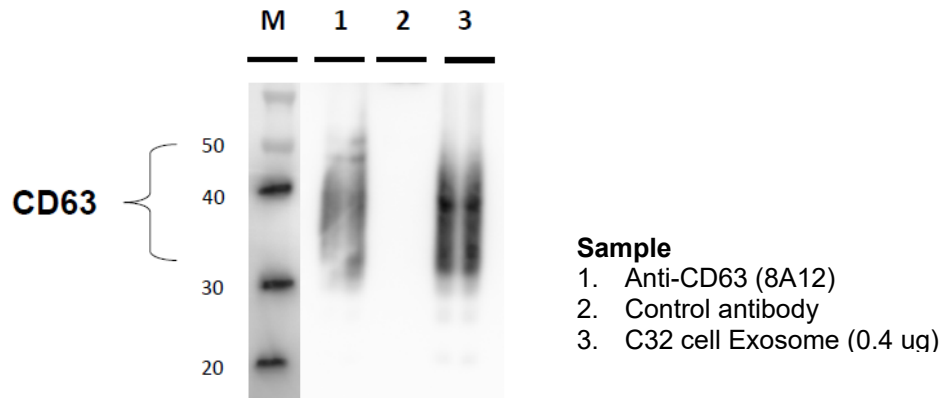
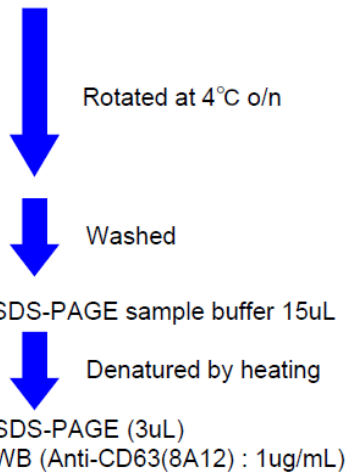


Fig.3 Immunoprecipitation in C32 cell (Melanoma cell line) Exosome

Protocol

Sample	
C32 cell Exosome	2 ug
+	
Anti-CD63(8A12)	1ug (Solid phase Magnetic bead)
PBS+1%BSA	200uL(Total)



For research use only, Not for diagnostic use.



COSMO BIO Co., LTD.

【JAPAN】
TOYO EKIMAE BLDG. 2-20, TOYO 2-CHOME,
KOTO-KU. TOKYO 135-0016, JAPAN
Phone: +81-3-5632-9610
FAX: +81-3-5632-9619
URL: <https://www.cosmobio.co.jp/>



COSMO BIO USA

【Outside Japan】
2792 Loker Ave West, Suite 101
Carlsbad, CA 92010, USA
email: support@cosmobiousa.com
Phone/FAX: (+1) 760-431-4600
URL: www.cosmobiousa.com