



MONOCLONAL ANTIBODY

For research use only. Not for diagnostic use.

Catalog No. SHI-EXO-M01

Anti CD9 [Clone : 12A12]

BACKGROUND

CD9 is a cell surface glycoprotein which belongs to the tetraspanin superfamily. CD9 is known to complex with integrins and other transmembrane 4 superfamily proteins. It is found on the surface of exosomes. It can modulate cell adhesion and migration and also trigger platelet activation and aggregation.

Product type	Primary antibody
Immunogen	Human CD9 (a.a. 113-195)
Raised in	Mouse
Myeloma	-
Clone number	12A12
Isotype	IgG2b
Source	Culture supernatant
Purification	Affinity purified by Protein G
Buffer	Phosphate buffered saline containing 0.1% NaN ₃ as a preservative
Concentration	1 mg / mL
Volume	100 uL
Label	Unlabeled
Specificity	Human CD9
Reactivity	Human and Bovine. No cross-reactivity with Rat and Mouse; Other species are not tested.
Storage	Store below - 40°C Aliquot to avoid cycles of freeze/thaw.

Application notes	<ul style="list-style-type: none">• Western blotting: 1/500 - 1/2,000 (0.5 - 2ug/mL, non-reductive condition)
Recommended dilutions	<ul style="list-style-type: none">• Immunoprecipitation: 1/200 – 1/1,000 (1- 5ug/mL) * Experiment example : Serum Exosome• ELISA: 1/500 – 1/200,000 (5ng/mL - 0.5ug/mL)• Flow cytometry: 1/100~1/1,000 (1- 10ug/mL)• Immunofluorescence: 1/100~1/1,000 (1- 10ug/mL)• Electron microscopy

Other applications have not been tested.
Optimal dilutions/concentrations should be determined by the end user.

References	<ul style="list-style-type: none">• Tsuda S <i>et al.</i>, <i>Sci Rep.</i> 2017 Oct 11;7(1):12989. PMID: 29021582• Nishida-Aoki N <i>et al.</i>, <i>Mol Ther.</i> 2017 Jan 4;25(1):181-191. PMID: 28129113• Matsuzaki K <i>et al.</i>, <i>Oncotarget.</i> 2017 Apr 11; 8(15): 24668–24678. PMID: 28160564• Fujita K <i>et al.</i>, <i>Sci Rep.</i> 2017; 7: 42961. PMID: 28211531• Yoshioka Y <i>et al.</i>, <i>Nat Commun.</i> 2014 Apr 7;5:3591. PMID: 24710016• Saito S <i>et al.</i>, <i>Sci Rep.</i> 2018 Mar 5;8(1):3997. PMID: 29507392• Yagi Y <i>et al.</i>, <i>Neurosci Lett.</i> 2017 Jan 1;636:48-57. PMID: 27780738• Ueda K <i>et al.</i>, <i>Sci Rep.</i> 2014 Aug 29;4:6232. PMID: 25167841
-------------------	---

ANTIBODY CHARACTERIZATION

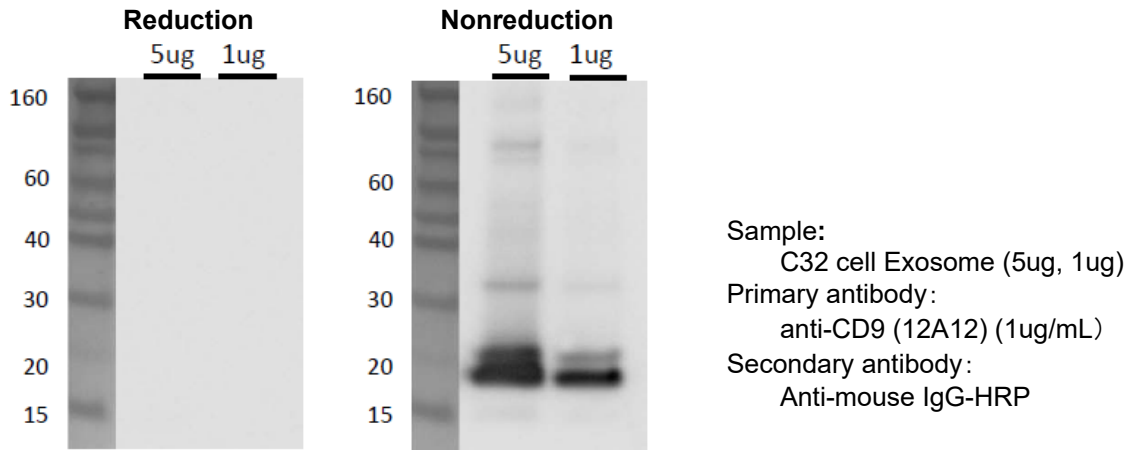


Fig.1 Western blot analysis of CD9 in C32 cell Exosome with anti-CD9 (12A12) antibody

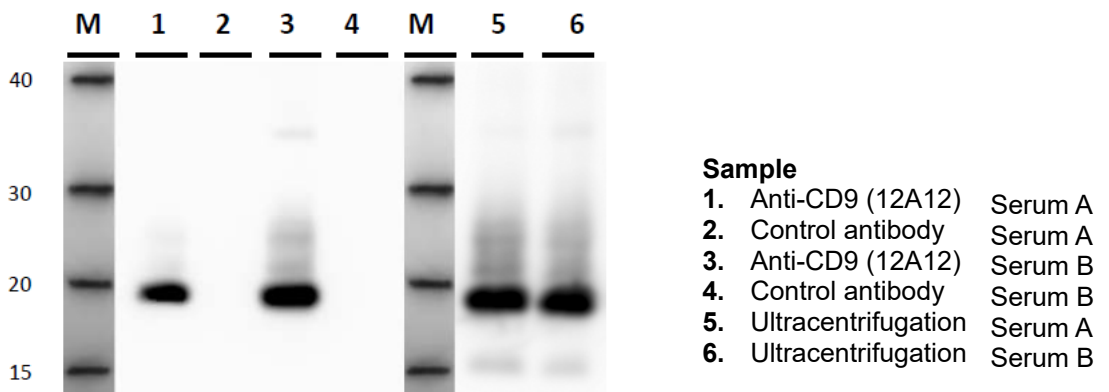
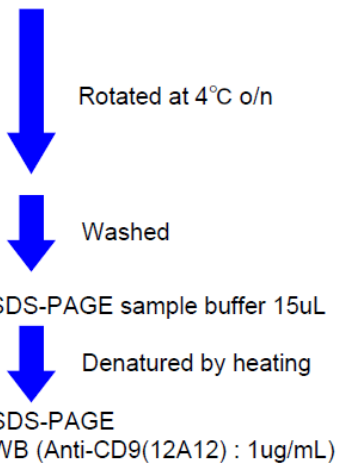


Fig.2 Immunoprecipitation in Human serum exosome

Protocol

Sample	
Serum	150uL
+	
Anti-CD9(12A12)	1ug (Solid phase Magnetic bead)
PBS	150uL



ANTIBODY CHARACTERIZATION

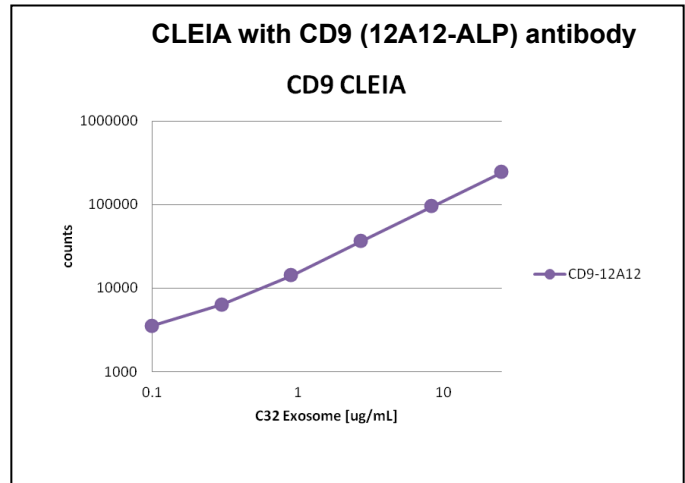
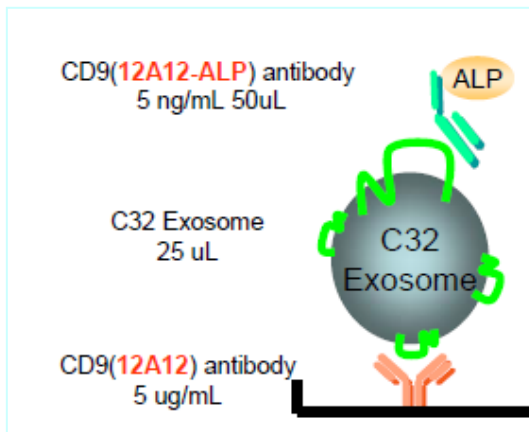


Fig.3 ELISA data of C32 cell exosome with anti-CD9 (12A12-ALP) antibody (5 ng/mL)

For research use only, Not for diagnostic use.



COSMO BIO Co., LTD.

【JAPAN】
TOYO EKIMAE BLDG. 2-20, TOYO 2-CHOME,
KOTO-KU. TOKYO 135-0016, JAPAN
Phone: +81-3-5632-9610
FAX: +81-3-5632-9619
URL: <https://www.cosmobio.co.jp/>



COSMO BIO USA

【Outside Japan】
2792 Loker Ave West, Suite 101
Carlsbad, CA 92010, USA
email: support@cosmobiousa.com
Phone/FAX: (+1) 760-431-4600
URL: www.cosmobiousa.com