



## MONOCLONAL ANTIBODY

**Catalog No. ABS-070001**

# Mouse Anti-canine CD3 $\epsilon$

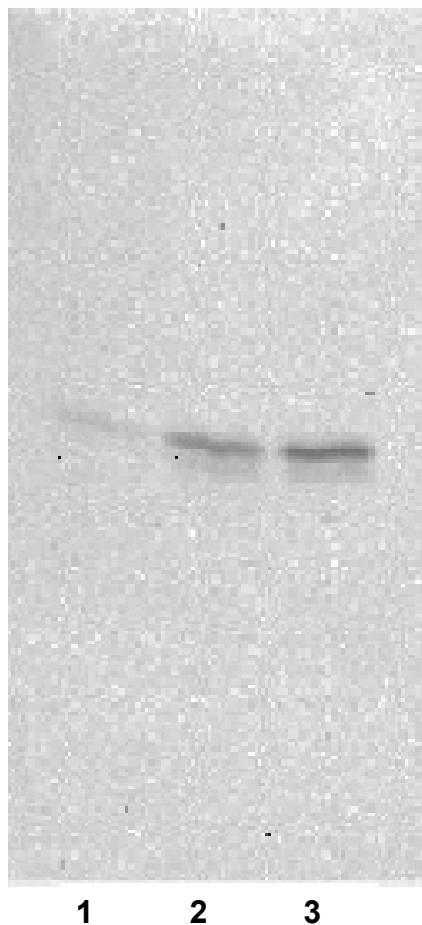
<b>Product type</b>	Primary antibodies
<b>Host</b>	Mouse
<b>Source</b>	Culture supernatant
<b>Form</b>	Liquid
<b>Volume</b>	Purified IgG prepared by affinity chromatography on Protein G from culture supernatant
<b>(Concentration)</b>	100 $\mu$ g
<b>Specificity</b>	Reconstitute with sterile PBS containing 0.09% sodium azide
<b>Antigen</b>	Canine CD3 $\epsilon$
<b>Clone</b>	Synthetic protein sequence derived from canine CD3 $\epsilon$
<b>Isotype</b>	1B9-7-1-1
	Mouse IgG1

**Application notes** WB (Not tested by IHC)  
**Recommended use**

**Recommended dilutions**  
Western blotting, 1/200—1/1000

Optimal dilutions/concentrations should be determined by the end user.  
**Staining Pattern**

**Cross reactivity** Canine (Do not react with feline)  
**Storage** Store at 4°C. Do not freeze.  
**References** No known references at this time



1: Peripheral Blood Mono- nuclear Cells (PBMCs)  
2: Anti-canine CD3 antibody - stimulated lymphocyte  
3: PHA-stimulated lymphocyte

Manufactured by Ab Science, Inc.

*For research use only. Not for clinical diagnosis.*



COSMO BIO Co., LTD.

【JAPAN】

TOYO EKIMAE BLDG. 2-20, TOYO 2-CHOME,  
KOTO-KU. TOKYO 135-0016, JAPAN  
Phone: +81-3-5632-9610  
FAX: +81-3-5632-9619  
URL: <https://www.cosmobio.co.jp/>



COSMO BIO USA

【Outside Japan】

2792 Loker Ave West, Suite 101  
Carlsbad, CA 92010, USA  
email: [info@cosmobiousa.com](mailto:info@cosmobiousa.com)  
Phone/FAX: (+1) 760-431-4600  
URL: [www.cosmobiousa.com](http://www.cosmobiousa.com)