



人と科学のステキな未来へ

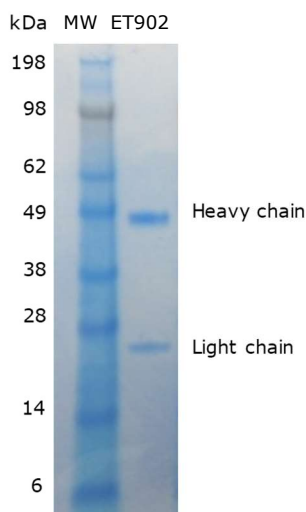
# コスモ・バイオ株式会社



## Fully-Human IgG2 Isotype Control

### Characterization Sheet

<b>Catalog #</b>	ET902 (Preclinical-Grade)	<b>Lot #</b>	17-1006
<b>Description and Source</b>	Fully-human IgG2 isotype control monoclonal antibody produced recombinantly in CHO cells under <u>serum-free</u> conditions. Suitable for animal studies.		
<b>Specificity and Activity</b>	Binds specifically to hapten molecule that does not exist in mammalian cells.		
<b>Formulation</b>	Concentration: 1 mg/ml, or as requested Buffer: Sterile PBS (pH 7.2)		
<b>Endotoxin Level</b>	< 1 EU/mg (measured against LPS standard)		
<b>Reconstitution</b>	No reconstitution necessary. Antibody prepared in sterile PBS.		
<b>Storage</b>	Store @ -80°C.  Antibody may be stored under sterile conditions for short term at 2 to 8°C, or at -70 to -80°C in a manual defrost freezer until expiration date.  Expiration Date: October 13, 2019		
<b>Application</b>	For <u>research use only</u> . Not intended for animal or human diagnostic or therapeutic uses.		
<b>Additional Info.</b>	Avoid repeated freeze-thaw cycles.		
<b>Purity</b>	Purified by Protein A affinity chromatography. Tested by SDS-PAGE.		



MW = Molecular Weight, SeeBlue® Plus2 Pre-Stained Protein Standard (Thermo Fisher Scientific, Cat# LC5925, Lot# 1836309)  
ET902 = Fully-Human IgG2 Isotype Control (Lot# 17-1006)

<b>Homogeneity</b>	> 95% monomer form by Gel Filtration Analysis
--------------------	-----------------------------------------------

---

FOR RESEARCH USE ONLY. For additional information regarding test methodologies and analyses, please contact our offices by phone: (510) 400-8757, or e-mail: [support@bingobiotech.com](mailto:support@bingobiotech.com).

---