

DHX38 Antibody

Affinity Purified

Produced in Rabbit

Catalog No.

A300-859A



Storage: 2-8° C

Amount: 0.1 ml at 0.2 mg/ml

Buffer: Tris-buffered Saline containing 0.1% BSA with 0.09% Sodium Azide

Shelf Life: 1 year from date of receipt

Production Procedures: Antibody was affinity purified using an epitope specific to DHX38 immobilized on solid support.

The epitope recognized by A300-859A maps to a region between residue 1200 and the C-terminus (residue 1227) of human DEAH (Asp-Glu-Ala-His) Box Polypeptide 38 using the numbering given in entry NP_054722.2 (GeneID 9785).

Antibody concentration was determined by extinction coefficient: absorbance at 280 nm of 1.4 equals 1.0 mg of IgG.

Alternate Names: DHX38, DHX-38, DEAH (Asp-Glu-Ala-His) Box Polypeptide 38, DDX38, DDX-38, DEAD/H (Asp-Glu-Ala-Asp/His) Box Polypeptide 38, PRPF16, PRP16, Pre-mRNA Splicing Factor 16.

Country of Origin: USA

Notes: Centrifuge tube to remove product from lid.

For In vitro laboratory use only. Not for any clinical, therapeutic, or diagnostic use in humans or animals. Not for animal or human consumption.

This product may not be resold or modified for resale without the prior written approval of Bethyl Laboratories, Inc.

Related Products:	Rabbit anti-DHX38 Antibody, Affinity Purified	A300-858A
	DHX38 Antibody AbVantage Pack	A310-270A
	DHX38 Blocking Peptide	BP300-859

Catalog No.

A300-859A

Reactivity: Human and mouse. Other species have not been tested.

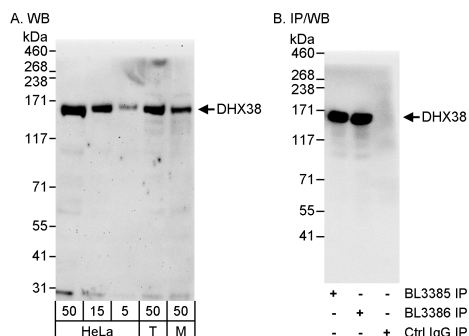
Applications: Optimal working dilutions should be determined experimentally by the investigator. Prepare working dilution immediately before use. Suggested starting dilutions are as follows:

Western Blot: 1:2,000 to 1:10,000.

Immunoprecipitation: 2 to 5 mcg/mg lysate.

Immunohistochemistry: Not tested.

Immunocytochemistry: Not tested.



Detection of Human and Mouse DHX38 by WB (h&m) and Immunoprecipitation (h). *Samples:* Whole cell lysate from HeLa (5, 15 and 50 mcg for WB; 1 mg for IP, 20% of IP loaded), 293T (T; 50 mcg) and mouse NIH3T3 (M; 50 mcg) cells. *Antibodies:* Affinity purified rabbit anti-DHX38 antibody BL3386 (Cat. No. A300-859A) used for WB at 0.04 mcg/ml (A) and 1 mcg/ml (B) and used for IP at 3 mcg/mg lysate (B). DHX38 was also immunoprecipitated by rabbit anti-DHX38 antibody BL3385 (Cat. No. A300-858A), which recognizes an upstream epitope. For blotting immunoprecipitated DHX38, ReliaBLOT™ Reagents and Procedures (Cat. No. WB120) were used. *Detection:* Chemiluminescence with exposure times of 3 minutes (A) and 10 seconds (B).

Catalog No.

A300-859A

MATERIAL SAFETY DATA SHEET

Contents Description

This product contains Rabbit immunoglobulin G (IgG) protein in Tris-buffered Saline containing 0.1% BSA with 0.09% Sodium Azide.

Hazardous Ingredients

Rabbit IgG Protein - No known toxicity for this biological material.

Sodium Azide (NaN_3) - AZIDE FORMS EXPLOSIVE CHEMICAL COMPOUNDS WITH LEAD AND COPPER PLUMBING. CARE MUST BE TAKEN TO WASH WASTE DOWN DRAINS WITH LARGE VOLUMES OF WATER.
LD50 oral mouse - 27 mg/kg.

Wash all affected areas with large volumes of water and if swallowed consult your physician immediately.

The above information is believed to be correct but does not purport to be all-inclusive and is intended to be used only as a guide. Bethyl Laboratories, Inc. shall not be liable or responsible in any way for use of either this information or the material supplied. Disposal of hazardous material may be subject to federal, state, or local laws or regulations.