

# Histone H3 Antibody (BL3591)

*Affinity Purified*

*Produced in Rabbit*

**Catalog No.**

A300-823A



**Storage:** 2-8° C  
**Amount:** 0.1 ml at 0.2 mg/ml  
**Buffer:** Tris-buffered Saline containing 0.1% BSA with 0.09% Sodium Azide  
**Shelf Life:** 1 year from date of receipt  
**Production Procedures:** Antibody was affinity purified using an epitope specific to Histone H3 immobilized on solid support.

The epitope recognized by A300-823A maps to a region between residue 100 and the C-terminus (residue 135) of human Histone H3 using the numbering given in entry NP\_003520.1 (GeneID 8350).

Antibody concentration was determined by extinction coefficient: absorbance at 280 nm of 1.4 equals 1.0 mg of IgG.

**Alternate Names:** Histone H3, Histone 1 H3A, H3/A, H3/FA.

**Country of Origin:** USA

**Notes:** Centrifuge tube to remove product from lid.

For In vitro laboratory use only. Not for any clinical, therapeutic, or diagnostic use in humans or animals. Not for animal or human consumption.

**This product may not be resold or modified for resale without the prior written approval of Bethyl Laboratories, Inc.**

<b>Related Products:</b>	Rabbit anti-Histone H3 Antibody (BL3588), Affinity Purified	A300-822A
	Histone H3 Antibody AbVantage Pack	A310-257A
	Histone H3 Blocking Peptide (BP3591)	BP300-823
	Phospho Histone H3 (S10) IHC Antibody, Affinity Purified	IHC-0419P

## Catalog No.

A300-823A

**Reactivity:** Human. Other species have not been tested.

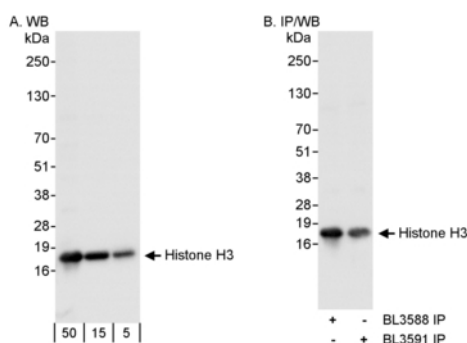
**Applications:** Optimal working dilutions should be determined experimentally by the investigator. Prepare working dilution immediately before use. Suggested starting dilutions are as follows:

Western Blot: 1:2,000 to 1:10,000.

Immunoprecipitation: 2 to 5 mcg/mg lysate.

Immunohistochemistry: Not tested.

Immunocytochemistry: Not tested.



**Detection of Human Histone H3 by Western Blot and Immunoprecipitation.**

*Samples:* Histones (5, 15 and 50 mcg for WB; 1 mg for IP, 20% of IP loaded) isolated from 293T cells.

*Antibodies:* Affinity purified rabbit anti-Histone H3 antibody BL3591 (Cat. No. A300-823A) used for WB at 0.04 mcg/ml (A) and 1 mcg/ml (B) and used for IP at 3 mcg/mg histones (B).

Histone H3 was also immunoprecipitated by rabbit anti-Histone H3 antibody BL3588, which recognizes an upstream epitope. For blotting immunoprecipitated Histone H3, ReliaBLOT™ Reagents and Procedures (Cat. No. WB120) were used.

*Detection:* Chemiluminescence with exposure times of 1 second (A and B).

**Catalog No.**

A300-823A

---

## **MATERIAL SAFETY DATA SHEET**

### **Contents Description**

This product contains Rabbit immunoglobulin G (IgG) protein in Tris-buffered Saline containing 0.1% BSA with 0.09% Sodium Azide.

### **Hazardous Ingredients**

Rabbit IgG Protein - No known toxicity for this biological material.

Sodium Azide ( $\text{NaN}_3$ ) - AZIDE FORMS EXPLOSIVE CHEMICAL COMPOUNDS WITH LEAD AND COPPER PLUMBING. CARE MUST BE TAKEN TO WASH WASTE DOWN DRAINS WITH LARGE VOLUMES OF WATER.  
LD50 oral mouse - 27 mg/kg.

Wash all affected areas with large volumes of water and if swallowed consult your physician immediately.

The above information is believed to be correct but does not purport to be all-inclusive and is intended to be used only as a guide. Bethyl Laboratories, Inc. shall not be liable or responsible in any way for use of either this information or the material supplied. Disposal of hazardous material may be subject to federal, state, or local laws or regulations.