

BRG1/SMARCA4 Antibody

Affinity Purified

Produced in Rabbit

Catalog No.

A300-813A



Storage: 2-8° C

Amount: 0.1 ml at 0.2 mg/ml

Buffer: Tris-buffered Saline containing 0.1% BSA with 0.09% Sodium Azide

Shelf Life: 1 year from date of receipt

Production Procedures: Antibody was affinity purified using an epitope specific to BRG1/SMARCA4 immobilized on solid support.

The epitope recognized by A300-813A maps to a region between residue 75 and 125 of human BRM/SWI2-Related Gene 1 (SWI/SNF Related, Matrix Associated, Actin Dependent Regulator of Chromatin, Subfamily A, member 4) using the numbering given in entry NP_003063.2 (GeneID 6597).

Antibody concentration was determined by extinction coefficient: absorbance at 280 nm of 1.4 equals 1.0 mg of IgG.

Alternate Names: BRG1, BRM/SWI2-Related Gene 1, SMARCA4, SWI/SNF Related, Matrix Associated, Actin Dependent Regulator of Chromatin, Subfamily A, member 4, SNF2L4, Sucrose Nonfermenting 2-Like 4.

Country of Origin: USA

Notes: Centrifuge tube to remove product from lid.

For In vitro laboratory use only. Not for any clinical, therapeutic, or diagnostic use in humans or animals. Not for animal or human consumption.

This product may not be resold or modified for resale without the prior written approval of Bethyl Laboratories, Inc.

| | | |
|--------------------------|---|-----------|
| Related Products: | Rabbit anti-BAF57/SMARCE1 Antibody, Affinity Purified | A300-810A |
| | SMARCA3 Antibody AbVantage Pack | A310-064A |
| | SMARCA2/BRM Antibody AbVantage Pack | A310-327A |
| | SNF2h/ISWI Antibody AbVantage Pack | A310-328A |
| | SMARCC2/BAF170 Antibody AbVantage Pack | A310-337A |
| | ARID1A/BAF250 Antibody AbVantage Pack | A310-338A |
| | BRG1/SMARCA4 Blocking Peptide | BP300-813 |

Catalog No.

A300-813A

Reactivity: Human and Mouse. Other species have not been tested.

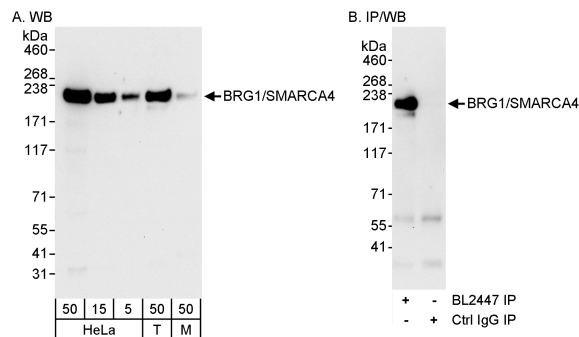
Applications: Optimal working dilutions should be determined experimentally by the investigator. Prepare working dilution immediately before use. Suggested starting dilutions are as follows:

Western Blot: 1:2,000 to 1:10,000.

Immunoprecipitation: 2 to 5 mcg/mg lysate.

Immunohistochemistry: Not tested.

Immunocytochemistry: Not tested.



Detection of Human and Mouse BRG1/SMARCA4 by WB (h&m) and Immunoprecipitation (h). *Samples:* Whole cell lysate from HeLa (5, 15 and 50 mcg for WB; 1 mg for IP, 20% of IP loaded), 293T (T; 50 mcg) and mouse NIH3T3 (M; 50 mcg) cells. *Antibodies:* Affinity purified rabbit anti-BRG1/SMARCA4 antibody BL2447 (Cat. No. A300-813A) used for WB at 0.04 mcg/ml (A) and at 1 mcg/ml (B) and used for IP at 3 mcg/mg lysate (B). For blotting immunoprecipitated BRG1/SMARCA4, ReliaBLOT™ Reagents and Procedures (Cat. No. WB120) were used. *Detection:* Chemiluminescence with exposure times of 30 seconds (A and B).

Catalog No.A300-813A

MATERIAL SAFETY DATA SHEET

Contents Description

This product contains Rabbit immunoglobulin G (IgG) protein in Tris-buffered Saline containing 0.1% BSA with 0.09% Sodium Azide.

Hazardous Ingredients

Rabbit IgG Protein - No known toxicity for this biological material.

Sodium Azide (NaN_3) - AZIDE FORMS EXPLOSIVE CHEMICAL COMPOUNDS WITH LEAD AND COPPER PLUMBING. CARE MUST BE TAKEN TO WASH WASTE DOWN DRAINS WITH LARGE VOLUMES OF WATER.
LD50 oral mouse - 27 mg/kg.

Wash all affected areas with large volumes of water and if swallowed consult your physician immediately.

The above information is believed to be correct but does not purport to be all-inclusive and is intended to be used only as a guide. Bethyl Laboratories, Inc. shall not be liable or responsible in any way for use of either this information or the material supplied. Disposal of hazardous material may be subject to federal, state, or local laws or regulations.