

Phospho MCM2-S53 Antibody (BL3353)

Affinity Purified

Produced in Rabbit

Catalog No.

A300-756A



Storage: 2-8° C

Amount: 0.1 ml at 0.2 mg/ml

Buffer: Tris-buffered Saline containing 0.1% BSA with 0.09% Sodium Azide

Shelf Life: 1 year from date of receipt

Production Procedures: Antibody was affinity purified using an epitope specific to Phospho MCM2-S53 immobilized on solid support.

Immunogen was a synthetic phosphorylated peptide, which represented a portion of human minichromosomal maintenance deficient 2 surrounding Serine 53 according to the numbering given in entry NP_004517.2 (GeneID 4171).

Antibody concentration was determined by extinction coefficient: absorbance at 280 nm of 1.4 equals 1.0 mg of IgG.

Alternate Names: MCM2, Minichromosomal Maintenance Deficient 2; Mitotin, CDCL1, BM28; KIAA0030.

Country of Origin: USA

Notes: Centrifuge tube to remove product from lid.

For In vitro laboratory use only. Not for any clinical, therapeutic, or diagnostic use in humans or animals. Not for animal or human consumption.

This product may not be resold or modified for resale without the prior written approval of Bethyl Laboratories, Inc.

Related Products:	Rabbit anti-MCM2 pSer108 Antibody (BL1539) affinity purified	A300-094A
	Rabbit anti-MCM2 pSer27 Antibody (BL870) affinity purified	A300-116A
	Rabbit anti-MCM2 pSer41 Antibody (BL872) affinity purified	A300-117A
	Goat anti-MCM2 Antibody (BL248G) affinity purified	A300-122A
	Rabbit anti-MCM2 Antibody (BL248) affinity purified	A300-191A
	Phospho MCM2-S53 Blocking Peptide (BP3353)	BP300-756P
	Phospho MCM2 (Ser108) IHC Antibody, affinity purified	IHC-01539P
	MCM2 IHC Antibody, affinity purified	IHC-0248P
	Phospho MCM2 (Ser27) IHC Antibody, affinity purified	IHC-0870P
	Phospho MCM2 (Ser41) IHC Antibody, affinity purified	IHC-0872P

Catalog No.

A300-756A

Reactivity: Human. Other species have not been tested.

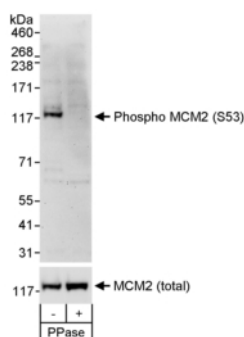
Applications: Optimal working dilutions should be determined experimentally by the investigator. Prepare working dilution immediately before use. Suggested starting dilutions are as follows:

Western Blot: 1:1,000 to 1:2,500

Immunoprecipitation: not tested

Immunohistochemistry: not tested

Immunocytochemistry: not tested



Detection of Human Phospho MCM2 (S53) by Western Blot.

Samples: Whole cell lysate (50 mcg) from asynchronous 293T cells that was mock treated (-) or treated (+) with phosphatases (PPase). **Antibody:** Affinity purified rabbit anti-phospho MCM2 (S53) antibody BL3353 (Cat. No. A300-756A) used at 0.1 mcg/ml. To examine total MCM2, the blot was stripped and then blotted with rabbit anti-MCM2 antibody BL253 (Cat. No. A300-191A) at 0.1 mcg/ml. **Detection:** Chemiluminescence with exposure times of 3 minutes (upper panel) and 10 seconds (lower panel).

Catalog No.

A300-756A

MATERIAL SAFETY DATA SHEET

Contents Description

This product contains Rabbit immunoglobulin G (IgG) protein in Tris-buffered Saline containing 0.1% BSA with 0.09% Sodium Azide.

Hazardous Ingredients

Rabbit IgG Protein - No known toxicity for this biological material.

Sodium Azide (NaN_3) - AZIDE FORMS EXPLOSIVE CHEMICAL COMPOUNDS WITH LEAD AND COPPER PLUMBING. CARE MUST BE TAKEN TO WASH WASTE DOWN DRAINS WITH LARGE VOLUMES OF WATER.
LD50 oral mouse - 27 mg/kg.

Wash all affected areas with large volumes of water and if swallowed consult your physician immediately.

The above information is believed to be correct but does not purport to be all-inclusive and is intended to be used only as a guide. Bethyl Laboratories, Inc. shall not be liable or responsible in any way for use of either this information or the material supplied. Disposal of hazardous material may be subject to federal, state, or local laws or regulations.