

RCD8 Antibody (BL2293)

Affinity Purified

Produced in Rabbit

Catalog No.

A300-745A



Storage: 2-8° C

Amount: 0.1 ml at 0.2 mg/ml

Buffer: Tris-buffered Saline containing 0.1% BSA with 0.09% Sodium Azide

Shelf Life: 1 year from date of receipt

Production Procedures: Antibody was affinity purified using an epitope specific to RCD8 immobilized on solid support.

The epitope recognized by A300-745A maps to a region between residue 1 and 50 of human RCD8 Autoantigen using the numbering given in entry AAH43616 (GeneID 23644).

Antibody concentration was determined by extinction coefficient: absorbance at 280 nm of 1.4 equals 1.0 mg of IgG.

Alternate Names: RCD8, RCD-8, Autoantigen RCD-8, Ge-1

Country of Origin: USA

Notes: Centrifuge tube to remove product from lid.

For In vitro laboratory use only. Not for any clinical, therapeutic, or diagnostic use in humans or animals. Not for animal or human consumption.

This product may not be resold or modified for resale without the prior written approval of Bethyl Laboratories, Inc.

Related Products:	Rabbit anti-RCD8 Antibody (BL2294), Affinity Purified	A300-746A
	RCD8 Antibody AbVantage Pack	A310-227A
	RCD8 Blocking Peptide (BP2293)	BP300-745

RCD8 Antibody (BL2293)

Bethyl Laboratories, Inc.

Catalog No.

A300-745A

Reactivity: Human and mouse. Other species have not been tested.

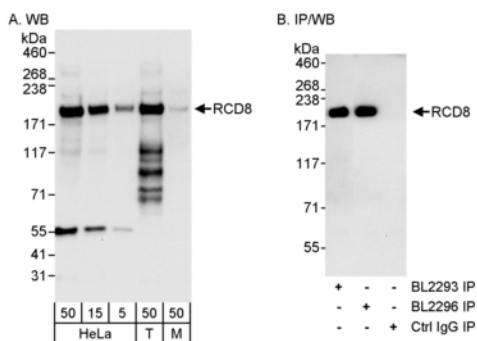
Applications: Optimal working dilutions should be determined experimentally by the investigator. Prepare working dilution immediately before use. Suggested starting dilutions are as follows:

Western Blot: 1:2,000 to 1:10,000

Immunoprecipitation: 2 to 5 mcg/mg lysate

Immunohistochemistry: not tested

Immunocytochemistry: not tested



Detection of Human and Mouse RCD8 by WB (h&m) and Immunoprecipitation (h). *Samples:* Whole cell lysate from HeLa (5, 15 and 50 mcg for WB; 1 mg for IP, 20% of IP loaded), 293T (T; 50 mcg), and mouse NIH3T3 (M; 50 mcg) cells. *Antibodies:* Affinity purified rabbit anti-RCD8 antibody BL2293 (Cat. No. A300-745A) used for WB at 0.04 mcg/ml (A) and 1 mcg/ml (B) and used for IP at 3 mcg/mg lysate (B). RCD8 was also immunoprecipitated by rabbit anti-RCD8 antibody BL2296 (Cat. No. A300-746A). For blotting immunoprecipitated RCD8, ReliaBLOT™ Reagents and Procedures (Cat. No. WB120) were used. *Detection:* Chemiluminescence with exposure times of 30 seconds (A) and 3 seconds (B).

Catalog No.A300-745A

MATERIAL SAFETY DATA SHEET

Contents Description

This product contains Rabbit immunoglobulin G (IgG) protein in Tris-buffered Saline containing 0.1% BSA with 0.09% Sodium Azide.

Hazardous Ingredients

Rabbit IgG Protein - No known toxicity for this biological material.

Sodium Azide (NaN_3) - AZIDE FORMS EXPLOSIVE CHEMICAL COMPOUNDS WITH LEAD AND COPPER PLUMBING. CARE MUST BE TAKEN TO WASH WASTE DOWN DRAINS WITH LARGE VOLUMES OF WATER.
LD50 oral mouse - 27 mg/kg.

Wash all affected areas with large volumes of water and if swallowed consult your physician immediately.

The above information is believed to be correct but does not purport to be all-inclusive and is intended to be used only as a guide. Bethyl Laboratories, Inc. shall not be liable or responsible in any way for use of either this information or the material supplied. Disposal of hazardous material may be subject to federal, state, or local laws or regulations.