

eIF2-alpha Antibody (BL3226)

Affinity Purified

Produced in Rabbit

Catalog No.

A300-721A



Storage:	2-8° C
Amount:	0.1 ml at 0.2 mg/ml
Buffer:	Tris-buffered Saline containing 0.1% BSA with 0.09% Sodium Azide
Shelf Life:	1 year from date of receipt
Production Procedures:	<p>Antibody was affinity purified using an epitope specific to eIF2-alpha immobilized on solid support.</p> <p>The epitope recognized by A300-721A maps to a region between residue 275 and the C-terminus (residue 315) of human Eukaryotic Translation Initiation Factor 1, subunit 1 alpha, 35kDa using the numbering given in entry NP_004085.1 (GeneID 1965).</p> <p>Antibody concentration was determined by extinction coefficient: absorbance at 280 nm of 1.4 equals 1.0 mg of IgG.</p>
Alternate Names:	eIF2a, eIF-2A, eIF2-alpha, eIF-2alpha, Eukaryotic Translation Initiation Factor 2A, EIF2S1, Eukaryotic Translation Initiation Factor 2, subunit 1 alpha, 35kDa
Country of Origin:	USA
Notes:	<p>Centrifuge tube to remove product from lid.</p> <p>For In vitro laboratory use only. Not for any clinical, therapeutic, or diagnostic use in humans or animals. Not for animal or human consumption.</p> <p>This product may not be resold or modified for resale without the prior written approval of Bethyl Laboratories, Inc.</p>
Related Products:	<div>eIF2-alpha Blocking Peptide (BP3226)</div> <div>BP300-721</div>

eIF2-alpha Antibody (BL3226)

Bethyl Laboratories, Inc.

Catalog No.

A300-721A

Reactivity: Human and mouse. Other species have not been tested.

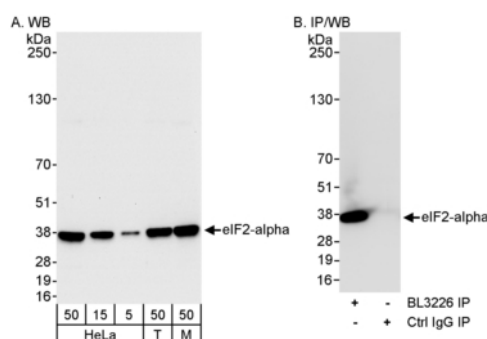
Applications: Optimal working dilutions should be determined experimentally by the investigator. Prepare working dilution immediately before use. Suggested starting dilutions are as follows:

Western Blot: 1:2,000 to 1:10,000

Immunoprecipitation: 2 to 5 mcg/mg lysate

Immunohistochemistry: not tested

Immunocytochemistry: not tested



Detection of Human and Mouse eIF2-alpha by WB (h&m) and Immunoprecipitation (h). *Samples:* Whole cell lysate from HeLa (5, 15 and 50 mcg for WB; 1 mg for IP, 20% of IP loaded), 293T (T; 50 mcg), and mouse NIH3T3 (M; 50 mcg) cells. *Antibodies:* Affinity purified rabbit anti-eIF2-alpha antibody BL3226 (Cat. No. A300-721A) used for WB at 0.04 mcg/ml (A) and 1 mcg/ml (B) and used for IP at 3 mcg/mg lysate (B). For blotting immunoprecipitated eIF2-alpha, ReliaBLOT™ Reagents and Procedures (Cat. No. WB120) were used. *Detection:* Chemiluminescence with exposure times of 30 seconds (A and B).

Catalog No.A300-721A

MATERIAL SAFETY DATA SHEET

Contents Description

This product contains Rabbit immunoglobulin G (IgG) protein in Tris-buffered Saline containing 0.1% BSA with 0.09% Sodium Azide.

Hazardous Ingredients

Rabbit IgG Protein - No known toxicity for this biological material.

Sodium Azide (NaN_3) - AZIDE FORMS EXPLOSIVE CHEMICAL COMPOUNDS WITH LEAD AND COPPER PLUMBING. CARE MUST BE TAKEN TO WASH WASTE DOWN DRAINS WITH LARGE VOLUMES OF WATER.
LD50 oral mouse - 27 mg/kg.

Wash all affected areas with large volumes of water and if swallowed consult your physician immediately.

The above information is believed to be correct but does not purport to be all-inclusive and is intended to be used only as a guide. Bethyl Laboratories, Inc. shall not be liable or responsible in any way for use of either this information or the material supplied. Disposal of hazardous material may be subject to federal, state, or local laws or regulations.