

# NUP214 Antibody (BL2244)

*Affinity Purified*

*Produced in Rabbit*

**Catalog No.**

A300-717A



**Storage:** 2-8° C

**Amount:** 0.1 ml at 0.2 mg/ml

**Buffer:** Tris-buffered Saline containing 0.1% BSA with 0.09% Sodium Azide

**Shelf Life:** 1 year from date of receipt

**Production Procedures:** Antibody was affinity purified using an epitope specific to NUP214 immobilized on solid support.

The epitope recognized by A300-716A maps to a region between residue 2050 and the C-terminus (residue 2090) of human Nucleoporin 214 using the numbering given in entry NP\_005076.3 (GeneID 8021).

Antibody concentration was determined by extinction coefficient: absorbance at 280 nm of 1.4 equals 1.0 mg of IgG.

**Alternate Names:** N214, N-214, NUP214, NUP-214, Nucleoporin 214, Nuclear Pore Complex Protein 214, CAN, CAIN.

**Country of Origin:** USA

**Notes:** Centrifuge tube to remove product from lid.

For In vitro laboratory use only. Not for any clinical, therapeutic, or diagnostic use in humans or animals. Not for animal or human consumption.

**This product may not be resold or modified for resale without the prior written approval of Bethyl Laboratories, Inc.**

**Related Products:** Rabbit anti-NUP214 Antibody (BL2243), Affinity Purified  
NUP214 Blocking Peptide (BP44)

A300-716A  
BP300-717

# NUP214 Antibody (BL2244)

Bethyl Laboratories, Inc.

## Catalog No.

A300-717A

**Reactivity:** Human and mouse. Other species have not been tested.

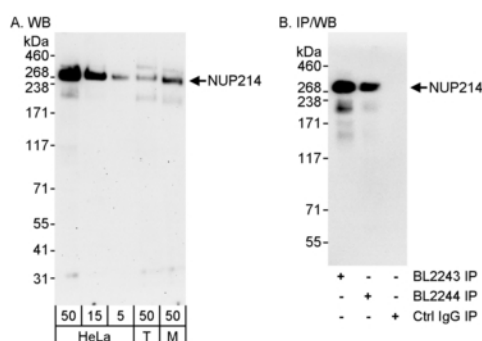
**Applications:** Optimal working dilutions should be determined experimentally by the investigator. Prepare working dilution immediately before use. Suggested starting dilutions are as follows:

Western Blot: 1:2,000 to 1:10,000

Immunoprecipitation: 2 to 5 mcg/mg lysate

Immunohistochemistry: not tested

Immunocytochemistry: not tested



**Detection of Human and Mouse NUP214 by WB (h&m) and Immunoprecipitation (h).** *Samples:* Whole cell lysate from HeLa (5, 15 and 50 mcg for WB; 1 mg for IP, 20% of IP loaded), 293T (T; 50 mcg), and mouse NIH3T3 (M; 50 mcg) cells. *Antibodies:* Affinity purified rabbit anti-NUP214 antibody BL2244 (Cat. No. A300-717A) used for WB at 0.04 mcg/ml (A) and 1 mcg/ml (B) and used for IP at 3 mcg/mg lysate (B). NUP214 was also immunoprecipitated using rabbit anti-NUP214 antibody BL2243 (Cat. No. A300-716A) at 3 mcg/mg lysate. For blotting immunoprecipitated NUP214, ReliaBLOT™ Reagents and Procedures (Cat. No. WB120) were used. *Detection:* Chemiluminescence with exposure times of 3 minutes (A) and 30 seconds (B).

Catalog No.

A300-717A

---

## MATERIAL SAFETY DATA SHEET

### Contents Description

This product contains Rabbit immunoglobulin G (IgG) protein in Tris-buffered Saline containing 0.1% BSA with 0.09% Sodium Azide.

### Hazardous Ingredients

Rabbit IgG Protein - No known toxicity for this biological material.

Sodium Azide ( $\text{NaN}_3$ ) - AZIDE FORMS EXPLOSIVE CHEMICAL COMPOUNDS WITH LEAD AND COPPER PLUMBING. CARE MUST BE TAKEN TO WASH WASTE DOWN DRAINS WITH LARGE VOLUMES OF WATER.  
LD50 oral mouse - 27 mg/kg.

Wash all affected areas with large volumes of water and if swallowed consult your physician immediately.

The above information is believed to be correct but does not purport to be all-inclusive and is intended to be used only as a guide. Bethyl Laboratories, Inc. shall not be liable or responsible in any way for use of either this information or the material supplied. Disposal of hazardous material may be subject to federal, state, or local laws or regulations.