

# HDAC1 Antibody (BL2608)

*Affinity Purified*



*Produced in Rabbit*

## Catalog No.

A300-713A

- Storage:** 2-8° C
- Amount:** 0.1 ml at 0.2 mg/ml
- Buffer:** Tris-buffered Saline containing 0.1% BSA with 0.09% Sodium Azide
- Shelf Life:** 1 year from date of receipt
- Production Procedures:** Antibody was affinity purified using an epitope specific to HDAC1 immobilized on solid support.
- The epitope recognized by A300-713A maps to region between residue 425 and the C-terminus (residue 482) of human Histone Deacetylase 1 using the numbering given in entry NP\_004955.2 (GeneID 3065).
- Antibody concentration was determined by extinction coefficient: absorbance at 280 nm of 1.4 equals 1.0 mg of IgG.
- Alternate Names:** HD1, HD-1, HDAC1, HDAC-1, Histone Deacetylase 1, RPD3, RPD3L1, Reduced Potassium Dependency 3, Like-1.
- Country of Origin:** USA
- Notes:** Centrifuge tube to remove product from lid.
- For In vitro laboratory use only. Not for any clinical, therapeutic, or diagnostic use in humans or animals. Not for animal or human consumption.
- This product may not be resold or modified for resale without the prior written approval of Bethyl Laboratories, Inc.**
- Related Products:**
- |  |           |
|--|-----------|
| Rabbit anti-HDAC3 Antibody (BL2127)                    | A300-464A |
| Rabbit anti-HDAC2 Antibody (BL2666), Affinity Purified | A300-704A |
| Rabbit anti-HDAC2 Antibody (BL2667), Affinity Purified | A300-705A |
| Rabbit anti-HDAC1 Antibody (BL2607), Affinity Purified | A300-712A |
| HDAC1 Blocking Peptide (BP2608)                        | BP300-713 |

# HDAC1 Antibody (BL2608)

Bethyl Laboratories, Inc.

## Catalog No.

A300-713A

**Reactivity:** Human and mouse. Other species have not been tested.

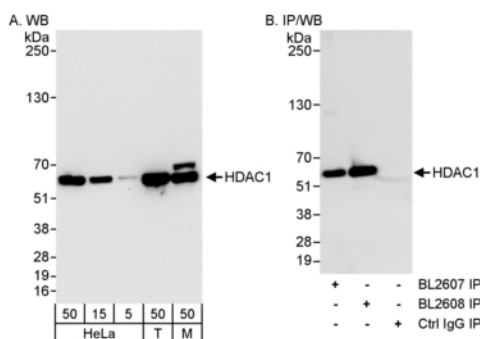
**Applications:** Optimal working dilutions should be determined experimentally by the investigator. Prepare working dilution immediately before use. Suggested starting dilutions are as follows:

Western Blot: 1:2,000 to 1:10,000

Immunoprecipitation: 2 to 5 mcg/mg lysate

Immunohistochemistry: not tested

Immunocytochemistry: not tested



**Detection of Human and Mouse HDAC1 by WB (h&m) and Immunoprecipitation (h).** *Samples:* Whole cell lysate from HeLa (5, 15 and 50 mcg for WB; 1 mg for IP, 20% of IP loaded), 293T (T; 50 mcg), and mouse NIH3T3 (M; 50 mcg) cells. *Antibodies:* Affinity purified rabbit anti-HDAC1 antibody BL2608 (Cat. No. A300-713A) used for WB at 0.04 mcg/ml (A) and 1 mcg/ml (B) and used for IP at 3 mcg/mg lysate (B). HDAC1 was also immunoprecipitated using rabbit anti-HDAC1 antibody BL2607 (Cat. No. A300-712A) at 3 mcg/mg lysate. For blotting immunoprecipitated HDAC1, ReliaBLOT™ Reagents and Procedures (Cat. No. WB120) were used. *Detection:* Chemiluminescence with exposure times of 30 seconds (A) and 10 seconds (B).

**Catalog No.**A300-713A

---

## MATERIAL SAFETY DATA SHEET

### Contents Description

This product contains Rabbit immunoglobulin G (IgG) protein in Tris-buffered Saline containing 0.1% BSA with 0.09% Sodium Azide.

### Hazardous Ingredients

Rabbit IgG Protein - No known toxicity for this biological material.

Sodium Azide ( $\text{NaN}_3$ ) - AZIDE FORMS EXPLOSIVE CHEMICAL COMPOUNDS WITH LEAD AND COPPER PLUMBING. CARE MUST BE TAKEN TO WASH WASTE DOWN DRAINS WITH LARGE VOLUMES OF WATER.  
LD50 oral mouse - 27 mg/kg.

Wash all affected areas with large volumes of water and if swallowed consult your physician immediately.

The above information is believed to be correct but does not purport to be all-inclusive and is intended to be used only as a guide. Bethyl Laboratories, Inc. shall not be liable or responsible in any way for use of either this information or the material supplied. Disposal of hazardous material may be subject to federal, state, or local laws or regulations.