

Phospho 53BP1 (S25) Antibody (BL1619)

Affinity Purified

Produced in Rabbit

Catalog No.
A300-652A



Storage:	2 - 8 ^o C						
Amount:	0.1 ml at 0.2 mg/ml						
Buffer:	Tris-buffered Saline containing 0.1% BSA and 0.09% Sodium Azide						
Shelf life:	1 year from date of receipt						
Production Procedures:	<p>Antibody was affinity purified using an epitope specific to phospho Ser25 on 53BP1 immobilized on solid support.</p> <p>Immunogen for A300-652A was a phosphorylated synthetic peptide, which represented a portion of human p53 Binding Protein 1 (GeneID 7158) around serine 25 according to the numbering given in entry NP_005648.1.</p> <p>Antibody concentration was determined by extinction coefficient: absorbance at 280 nm of 1.4 equals 1.0 mg of IgG.</p>						
Alternative Names:	53BP1, 53BP-1, TP53BP1, Tumor Protein p53 Binding Protein 1.						
Country of Origin:	USA						
Notes:	<p>Centrifuge microtube to remove product from lid.</p> <p>For in vitro laboratory use only. Not for any clinical, therapeutic, or diagnostic use in humans or animals. Not for animal or human consumption.</p> <p>This product may not be resold or modified for resale without the prior written approval of Bethyl Laboratories, Inc.</p>						
Related Products:	<table border="0"> <tr> <td>Phospho 53BP1 Blocking Peptide BP1619</td> <td>BP300-652P</td> </tr> <tr> <td>R anti-53BP1 Antibody BL181</td> <td>A300-272A</td> </tr> <tr> <td>R anti-53BP1 Antibody BL182</td> <td>A300-273A</td> </tr> </table>	Phospho 53BP1 Blocking Peptide BP1619	BP300-652P	R anti-53BP1 Antibody BL181	A300-272A	R anti-53BP1 Antibody BL182	A300-273A
Phospho 53BP1 Blocking Peptide BP1619	BP300-652P						
R anti-53BP1 Antibody BL181	A300-272A						
R anti-53BP1 Antibody BL182	A300-273A						

Phospho 53BP1 (S25) Antibody (BL1619)

Cat. No.
A300-652A

Reactivity: Human, mouse. Other species have not been tested.

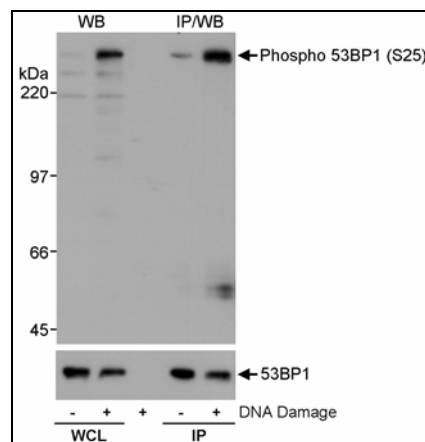
Applications: Optimal working dilutions should be determined experimentally by the investigator. Prepare working dilution immediately before use. Suggested starting dilutions are as follows.

Western Blot: 1:1,000 – 1:10,000

Immunoprecipitation: 1 to 4 mcg/mg of lysate

IHC/ICC/IF: not tested

In some cases, the antibody may be diluted further than indicated.



Detection of Phospho 53BP1 by Western Blot of WCL and Immunoprecipitates. *Samples:* Whole cell lysate (50 mcg for WB; 1 mg/IP) from 293T cells that were mock treated or treated with NCS (200 ng/ml; 1h). *Antibodies:* Affinity purified rabbit anti-Phospho 53BP1 (BL1619) used at 0.1 mcg/ml for WB. 53BP1 was immunoprecipitated using a monoclonal antibody to 53BP1. The center lane represents a sample prepared by mock IP in which no antibody was used in the IP. To compare loading, the membrane was stripped and reblotted (1:100 dilution) using a monoclonal antibody to 53BP1. *Detection:* Chemiluminescence with an exposure time of 5 seconds.

Phospho 53BP1 (S25) Antibody (BL1619)
Affinity Purified

Produced in Rabbit

Catalog No.
A300-652A



MATERIAL SAFETY DATA SHEET

Contents Description

This product contains rabbit immunoglobulin G (IgG) protein in Tris-buffered Saline containing 0.1% BSA and 0.09% Sodium Azide.

Hazardous Ingredients

Rabbit IgG Protein - No known toxicity for this biological material.

Bovine Serum Albumin (BSA) - No known toxicity for this biological material.

Sodium Azide (NaN_3) - AZIDE FORMS EXPLOSIVE CHEMICAL COMPOUNDS WITH LEAD AND COPPER PLUMBING. CARE MUST BE TAKEN TO WASH WASTE DOWN DRAINS WITH LARGE VOLUMES OF WATER.
LD50 oral mouse - 27 mg/kg.

Wash all affected areas with large volumes of water and if swallowed consult your physician immediately.

The above information is believed to be correct but does not purport to be all-inclusive and is intended to be used only as a guide. Bethyl Laboratories, Inc. shall not be liable or responsible in any way for use of either this information or the material supplied. Disposal of hazardous material may be subject to federal, state, or local laws or regulations.