

# GAPDH Antibody (BL3025)

## *Affinity Purified*

*Produced in Rabbit*

**Catalog No.**  
A300-641A



<b>Storage:</b>	2 - 8 <sup>o</sup> C	
<b>Amount:</b>	0.1 ml at 0.2 mg/ml	
<b>Buffer:</b>	Tris-buffered Saline containing 0.1% BSA and 0.09% Sodium Azide	
<b>Shelf life:</b>	1 year from date of receipt	
<b>Production Procedures:</b>	<p>Antibody was affinity purified using an epitope specific to GAPDH immobilized on solid support.</p> <p>The epitope recognized by A300-641A maps to a region between residues 250 and 300 of human Glyceraldehyde-3-Phosphate Dehydrogenase using the numbering given in entry NP_002037.2 (GeneID 2597).</p> <p>Antibody concentration was determined by extinction coefficient: absorbance at 280 nm of 1.4 equals 1.0 mg of IgG.</p>	
<b>Alternative Names:</b>	GAPDH, G3PD, GAPD, Glyceraldehyde-3-Phosphate Dehydrogenase.	
<b>Country of Origin:</b>	USA	
<b>Notes:</b>	<p>Centrifuge microtube to remove product from lid.</p> <p>For in vitro laboratory use only. Not for any clinical, therapeutic, or diagnostic use in humans or animals. Not for animal or human consumption.</p> <p><b>This product may not be resold or modified for resale without the prior written approval of Bethyl Laboratories, Inc.</b></p>	
<b>Related Products:</b>	GAPDH Blocking Peptide BP3025 R anti-GAPDH Antibody BL3023 R anti-GAPDH Antibody BL3024 R anti-GAPDH Antibody BL3026 R anti-GAPDH Antibody BL3042	BP300-641 A300-639A A300-640A A300-642A A300-643A

## GAPDH Antibody (BL3025)

Bethyl Laboratories, Inc.

**Cat. No.**  
A300-641A

**Reactivity:** Human and mouse. Other species have not been tested. Reactivity with *X. laevis* GAPDH is expected owing to conservation of sequence between this ortholog and human GAPDH at the site to which the epitope maps.

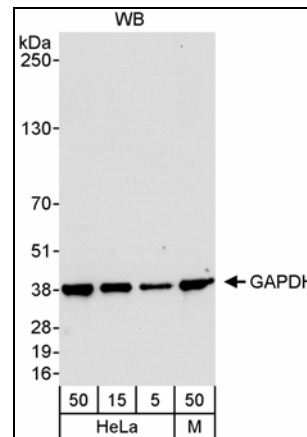
**Applications:** Optimal working dilutions should be determined experimentally by the investigator. Prepare working dilution immediately before use. Suggested starting dilutions are as follows.

Western Blot: 1:2,000 – 1:10,000

Immunoprecipitation: not recommended

IHC/ICC/IF: not tested

In some cases, the antibody may be diluted further than indicated.



**Detection of Human and Mouse GAPDH by Western Blot.** *Samples:* Whole cell lysate from HeLa (5, 15 and 50 mcg) and mouse NIH3T3 (M; 50 mcg). *Antibody:* Affinity purified rabbit anti-GAPDH antibody BL3025 (Cat. No. A300-641A) used at 0.04 mcg/ml. *Detection:* Chemiluminescence with an exposure time of 10 seconds.

**GAPDH Antibody (BL3025)**  
*Affinity Purified*

*Produced in Rabbit*

**Catalog No.**  
A300-641A



---

## MATERIAL SAFETY DATA SHEET

### Contents Description

This product contains rabbit immunoglobulin G (IgG) protein in Tris-buffered Saline containing 0.1 % BSA and 0.09% Sodium Azide.

### Hazardous Ingredients

Rabbit IgG Protein - No known toxicity for this biological material.

Bovine Serum Albumin (BSA) - No known toxicity for this biological material.

Sodium Azide ( $\text{NaN}_3$ ) - AZIDE FORMS EXPLOSIVE CHEMICAL COMPOUNDS WITH LEAD AND COPPER PLUMBING. CARE MUST BE TAKEN TO WASH WASTE DOWN DRAINS WITH LARGE VOLUMES OF WATER.  
LD50 oral mouse - 27 mg/kg.

Wash all affected areas with large volumes of water and if swallowed consult your physician immediately.

The above information is believed to be correct but does not purport to be all-inclusive and is intended to be used only as a guide. Bethyl Laboratories, Inc. shall not be liable or responsible in any way for use of either this information or the material supplied. Disposal of hazardous material may be subject to federal, state, or local laws or regulations.