

ErbB2 Antibody (BL3033)

Affinity Purified

Produced in Rabbit

Catalog No.
A300-623A



Storage:	2 - 8 ^o C	
Amount:	0.1 ml at 0.2 mg/ml	
Buffer:	Tris-buffered Saline containing 0.1% BSA and 0.09% Sodium Azide	
Shelf life:	1 year from date of receipt	
Production Procedures:	<p>Antibody was affinity purified using an epitope specific to ErbB2 immobilized on solid support.</p> <p>The epitope recognized by A300-623A maps to a region between residue 1200 and the C-terminus (residue 1255) of human v-erb-b2 erythroblastic leukemia viral oncogene homolog 2 using the numbering given in entry NP_004439.2 (GeneID 2064).</p> <p>Antibody concentration was determined by extinction coefficient: absorbance at 280 nm of 1.4 equals 1.0 mg of IgG.</p>	
Alternative Names:	ErbB2, ErbB-2, c-erb B2, v-erb-b2 erythroblastic leukemia viral oncogene homolog 2, HER2, HER-2, Neu, NGL, Neuroblastoma- or Glioblastoma-Derived, TKR1, Tyrosine Kinase-type Cell Surface Receptor Her2.	
Country of Origin:	USA	
Notes:	<p>Centrifuge microtube to remove product from lid.</p> <p>For in vitro laboratory use only. Not for any clinical, therapeutic, or diagnostic use in humans or animals. Not for animal or human consumption.</p> <p>This product may not be resold or modified for resale without the prior written approval of Bethyl Laboratories, Inc.</p>	
Related Products:	ErbB2 Blocking Peptide BP3033 R anti-ErbB2 Antibody BL3030 R anti-ErbB2 Antibody BL3032 R anti-EGFR Antibody BL1585 R anti-EGFR Antibody BL1586	BP300-623 A300-621A A300-622A A300-387A A300-388A

ErbB2 Antibody (BL3033)

Bethyl Laboratories, Inc.

Cat. No.
A300-623A

Reactivity: Human. In initial tests of lysate from mouse NIH3T3 cells, mouse ErbB2 was not readily detectable. Other species have not been tested.

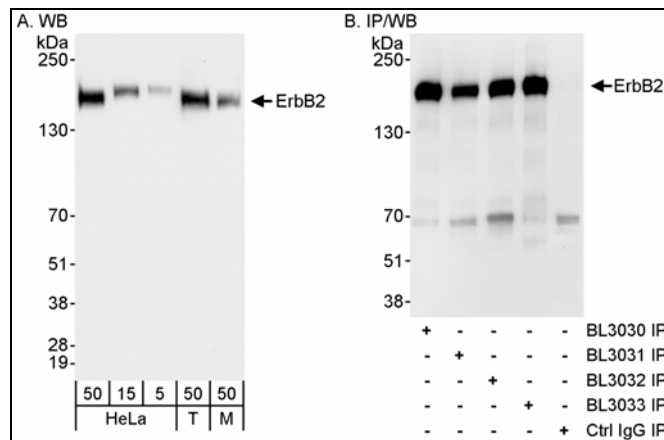
Applications: Optimal working dilutions should be determined experimentally by the investigator. Prepare working dilution immediately before use. Suggested starting dilutions are as follows.

Western Blot: 1:2,000 – 1:10,000

Immunoprecipitation: 1 to 4 mcg/mg of lysate

IHC/ICC/IF: not tested

In some cases, the antibody may be diluted further than indicated.



Detection of Human and Mouse ErbB2 by Western Blot (H & M) and Immunoprecipitation (H).

Samples: Whole cell lysate from HeLa (5, 15 and 50 mcg for WB; 1 mg for IP, 20% of IP loaded), 293T (T; 50 mcg for WB) and mouse NIH3T3 (M; 50 mcg for WB) cells. *Antibodies:* Affinity purified rabbit anti-ErbB2 antibody BL3033 (Cat. No. A300-623A) used for WB at 1 mcg/ml (A) and 0.04 mcg/ml (B) and used for IP at 3 mcg/mg lysate. ErbB2 was also immunoprecipitated using rabbit anti-ErbB2 antibodies BL3030 (Cat. No. A300-621A) BL3031 and BL3032 (Cat. No. A300-622A) at 3 mcg/mg lysate. For blotting immunoprecipitated ErbB2, ReliaBLOT™ Reagents and Procedures (Cat. No. WB120) were used. *Detection:* Chemiluminescence with exposure times of 10 seconds (A and B).

ErbB2 Antibody (BL3033)
Affinity Purified

Produced in Rabbit

Catalog No.
A300-623A



MATERIAL SAFETY DATA SHEET

Contents Description

This product contains rabbit immunoglobulin G (IgG) protein in Tris-buffered Saline containing 0.1 % BSA and 0.09% Sodium Azide.

Hazardous Ingredients

Rabbit IgG Protein - No known toxicity for this biological material.

Bovine Serum Albumin (BSA) - No known toxicity for this biological material.

Sodium Azide (NaN_3) - AZIDE FORMS EXPLOSIVE CHEMICAL COMPOUNDS WITH LEAD AND COPPER PLUMBING. CARE MUST BE TAKEN TO WASH WASTE DOWN DRAINS WITH LARGE VOLUMES OF WATER.

LD50 oral mouse - 27 mg/kg.

Wash all affected areas with large volumes of water and if swallowed consult your physician immediately.

The above information is believed to be correct but does not purport to be all-inclusive and is intended to be used only as a guide. Bethyl Laboratories, Inc. shall not be liable or responsible in any way for use of either this information or the material supplied. Disposal of hazardous material may be subject to federal, state, or local laws or regulations.