

## CAP-G2 Antibody (BL2948)

### Affinity Purified

*Produced in Rabbit*

#### Catalog No.

A300-605A



<b>Storage:</b>	2 - 8 <sup>o</sup> C	
<b>Amount:</b>	0.1 ml at 0.2 mg/ml	
<b>Buffer:</b>	Tris-buffered Saline containing 0.1% BSA and 0.09% Sodium Azide	
<b>Shelf life:</b>	1 year from date of receipt	
<b>Production Procedures:</b>	<p>Antibody was affinity purified using an epitope specific to CAP-G2 immobilized on solid support.</p> <p>The epitope recognized by A300-605A maps to a region between residue 1100 and the C-terminus (residue 1143) of human Chromosome-Associated Protein G2 using the numbering given in entry AAH43404.1 (GeneID 54892).</p> <p>Antibody concentration was determined by extinction coefficient: absorbance at 280 nm of 1.4 equals 1.0 mg of IgG.</p>	
<b>Alternative Names:</b>	CAPG2, hCAPG2, CAP-G2, hCAP-G2, Human Chromosome-Associated Protein G2, LUZP5, LUZP-5, Leucine Zipper Protein 5, MTB, More Than Blood homolog.	
<b>Country of Origin:</b>	USA	
<b>Notes:</b>	<p>Centrifuge microtube to remove product from lid.</p> <p>For in vitro laboratory use only. Not for any clinical, therapeutic, or diagnostic use in humans or animals. Not for animal or human consumption.</p> <p><b>This product may not be resold or modified for resale without the prior written approval of Bethyl Laboratories, Inc.</b></p>	
<b>Related Products:</b>	CAP-G2 Blocking Peptide BP2948 R anti-CAP-D3 Antibody BL2944 R anti-CAP-D2 Antibody BL2932 R anti-CAP-G Antibody BL2936 R anti-CAP-H Antibody BL2940 R anti-SMC2(CAP-E) Antibody BL546 R anti-SMC2(CAP-E) Antibody BL547 R anti-SMC4(CAP-C) Antibody BL550 R anti-SMC4(CAP-C) Antibody BL551	BP300-605 A300-604A A300-601A A300-602A A300-603A A300-056A A300-057A A300-063A A300-064A

## CAP-G2 Antibody (BL2948)

**Cat. No.**  
 A300-605A

**Reactivity:** Human. Other species have not been tested.

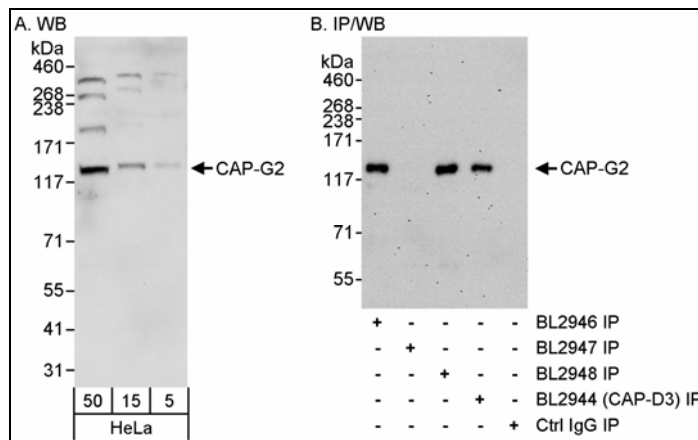
**Applications:** Optimal working dilutions should be determined experimentally by the investigator. Prepare working dilution immediately before use. Suggested starting dilutions are as follows.

Western Blot: 1:2,000 – 1:10,000

Immunoprecipitation: 1 to 4 mcg/mg of lysate

IHC/ICC/IF: not tested

In some cases, the antibody may be diluted further than indicated.



**Detection of Human CAP-G2 by Western Blot and Immunoprecipitation.** *Samples:* Whole cell lysate (5, 15 and 50 mcg for WB; 1 mg for IP, 20% of IP loaded) from HeLa cells. *Antibodies:* Affinity purified rabbit anti-CAP-G2 antibody BL2948 (Cat. No. A300-605A) used for WB at 0.04 mcg/ml (A) and 1 mcg/ml (B) and used for IP at 3 mcg/mg lysate. CAP-G2 was also immunoprecipitated by rabbit anti-CAP-G2 antibody BL2946, which binds an upstream epitope, and CAP-G2 was co-immunoprecipitated by rabbit anti-CAP-D3 antibody BL2944 (Cat. No. A300-604A). For blotting immunoprecipitated CAP-G2, ReliaBLOT™ Reagents and Procedures (WB120) were used. *Detection:* Chemiluminescence with exposure times of 30 seconds (A) and 3 minutes (B).

**CAP-G2 Antibody (BL2948)***Affinity Purified**Produced in Rabbit***Catalog No.**

A300-605A



---

**MATERIAL SAFETY DATA SHEET****Contents Description**

This product contains rabbit immunoglobulin G (IgG) protein in Tris-buffered Saline containing 0.1% BSA and 0.09% Sodium Azide.

**Hazardous Ingredients**

Rabbit IgG Protein - No known toxicity for this biological material.

Bovine Serum Albumin (BSA) - No known toxicity for this biological material.

Sodium Azide ( $\text{NaN}_3$ ) - AZIDE FORMS EXPLOSIVE CHEMICAL COMPOUNDS WITH LEAD AND COPPER PLUMBING. CARE MUST BE TAKEN TO WASH WASTE DOWN DRAINS WITH LARGE VOLUMES OF WATER.

LD50 oral mouse - 27 mg/kg.

Wash all affected areas with large volumes of water and if swallowed consult your physician immediately.

The above information is believed to be correct but does not purport to be all-inclusive and is intended to be used only as a guide. Bethyl Laboratories, Inc. shall not be liable or responsible in any way for use of either this information or the material supplied. Disposal of hazardous material may be subject to federal, state, or local laws or regulations.