

CAP-H Antibody (BL2940)

Affinity Purified

Produced in Rabbit

Catalog No.
A300-603A



Storage:	2 - 8 ^o C																
Amount:	0.1 ml at 0.2 mg/ml																
Buffer:	Tris-buffered Saline containing 0.1% BSA and 0.09% Sodium Azide																
Shelf life:	1 year from date of receipt																
Production Procedures:	<p>Antibody was affinity purified using an epitope specific to CAP-H immobilized on solid support.</p> <p>The epitope recognized by A300-603A maps to a region between residue 700 and the C-terminus (residue 741) of human Chromosome Associated Protein H (Barren homolog BRRN1) using the numbering given in entry NP_056156.2 (GeneID 23397).</p> <p>Antibody concentration was determined by extinction coefficient: absorbance at 280 nm of 1.4 equals 1.0 mg of IgG.</p>																
Alternative Names:	CAPH, CAP-H, hCAPH, hCAP-H, Human Chromosome Associated Protein H, BRRN1, Barren Homolog, CND2, Condensin I Subunit CAP-H.																
Country of Origin:	USA																
Notes:	<p>Centrifuge microtube to remove product from lid.</p> <p>For in vitro laboratory use only. Not for any clinical, therapeutic, or diagnostic use in humans or animals. Not for animal or human consumption.</p> <p>This product may not be resold or modified for resale without the prior written approval of Bethyl Laboratories, Inc.</p>																
Related Products:	<table border="0"> <tr> <td>CAP-H Blocking Peptide BP2940</td> <td>BP300-603</td> </tr> <tr> <td>R anti-CAP-D2 Antibody BL2932</td> <td>A300-601A</td> </tr> <tr> <td>R anti-CAP-G Antibody BL2936</td> <td>A300-602A</td> </tr> <tr> <td>R anti-CAP-D3 Antibody BL2944</td> <td>A300-604A</td> </tr> <tr> <td>R anti-SMC2(CAP-E) Antibody BL546</td> <td>A300-056A</td> </tr> <tr> <td>R anti-SMC2(CAP-E) Antibody BL547</td> <td>A300-057A</td> </tr> <tr> <td>R anti-SMC4(CAP-C) Antibody BL550</td> <td>A300-063A</td> </tr> <tr> <td>R anti-SMC4(CAP-C) Antibody BL551</td> <td>A300-064A</td> </tr> </table>	CAP-H Blocking Peptide BP2940	BP300-603	R anti-CAP-D2 Antibody BL2932	A300-601A	R anti-CAP-G Antibody BL2936	A300-602A	R anti-CAP-D3 Antibody BL2944	A300-604A	R anti-SMC2(CAP-E) Antibody BL546	A300-056A	R anti-SMC2(CAP-E) Antibody BL547	A300-057A	R anti-SMC4(CAP-C) Antibody BL550	A300-063A	R anti-SMC4(CAP-C) Antibody BL551	A300-064A
CAP-H Blocking Peptide BP2940	BP300-603																
R anti-CAP-D2 Antibody BL2932	A300-601A																
R anti-CAP-G Antibody BL2936	A300-602A																
R anti-CAP-D3 Antibody BL2944	A300-604A																
R anti-SMC2(CAP-E) Antibody BL546	A300-056A																
R anti-SMC2(CAP-E) Antibody BL547	A300-057A																
R anti-SMC4(CAP-C) Antibody BL550	A300-063A																
R anti-SMC4(CAP-C) Antibody BL551	A300-064A																

CAP-H Antibody (BL2940)

Cat. No.
 A300-603A

Reactivity: Human. CAP-H was not readily detected in initial tests of whole cell lysate from mouse (NIH3T3) cells. Other species have not been tested.

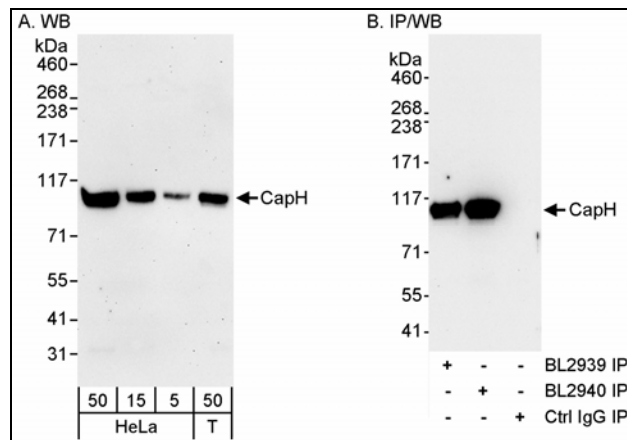
Applications: Optimal working dilutions should be determined experimentally by the investigator. Prepare working dilution immediately before use. Suggested starting dilutions are as follows.

Western Blot: 1:2,000 – 1:10,000

Immunoprecipitation: 1 to 4 mcg/mg of lysate

IHC/ICC/IF: not tested

In some cases, the antibody may be diluted further than indicated.



Detection of Human CAP-H by Western Blot and Immunoprecipitation. *Samples:* Whole cell lysate from HeLa (5, 15 and 50 mcg for WB; 1 mg for IP, 20% of IP loaded) and 293T (50 mcg for WB) cells. *Antibodies:* Affinity purified rabbit anti-CAP-H antibody BL2940 (Cat. No. A300-603A) used for WB at 0.04 mcg/ml (A) and 1 mcg/ml (B) and for IP at 3 mcg/mg lysate (B). CAP-H was also immunoprecipitated using rabbit anti-CAP-H antibody BL2939, which binds an upstream epitope. For detecting immunoprecipitated CAP-H, ReliaBLOT™ Reagents and Procedures (Cat. No. WB120) were used. *Detection:* Chemiluminescence with exposure times of 3 minutes (A) and 30 seconds (B).

CAP-H Antibody (BL2940)
Affinity Purified

Produced in Rabbit

Catalog No.
A300-603A



MATERIAL SAFETY DATA SHEET

Contents Description

This product contains rabbit immunoglobulin G (IgG) protein in Tris-buffered Saline containing 0.1 % BSA and 0.09% Sodium Azide.

Hazardous Ingredients

Rabbit IgG Protein - No known toxicity for this biological material.

Bovine Serum Albumin (BSA) - No known toxicity for this biological material.

Sodium Azide (NaN_3) - AZIDE FORMS EXPLOSIVE CHEMICAL COMPOUNDS WITH LEAD AND COPPER PLUMBING. CARE MUST BE TAKEN TO WASH WASTE DOWN DRAINS WITH LARGE VOLUMES OF WATER.

LD50 oral mouse - 27 mg/kg.

Wash all affected areas with large volumes of water and if swallowed consult your physician immediately.

The above information is believed to be correct but does not purport to be all-inclusive and is intended to be used only as a guide. Bethyl Laboratories, Inc. shall not be liable or responsible in any way for use of either this information or the material supplied. Disposal of hazardous material may be subject to federal, state, or local laws or regulations.