

**AF9 Antibody (BL2310)**  
*Affinity Purified*

*Produced in Rabbit*

**Catalog No.**  
 A300-595A



<b>Storage:</b>	2 - 8 <sup>o</sup> C	
<b>Amount:</b>	0.1 ml at 0.2 mg/ml	
<b>Buffer:</b>	Tris-buffered Saline containing 0.1% BSA and 0.09% Sodium Azide	
<b>Shelf life:</b>	1 year from date of receipt	
<b>Production Procedures:</b>	<p>Antibody was affinity purified using an epitope specific to AF9 immobilized on solid support.</p> <p>The epitope recognized by A300-595A maps to a region between residues 200 and 250 of human ALL1 Fused Gene from Chromosome 9 Protein (MLLT3, Myeloid/Lymphoid or Mixed-Lineage Leukemia Translocate 3) using the numbering given in entry NP_004520.1 (GeneID 4300).</p> <p>Antibody concentration was determined by extinction coefficient: absorbance at 280 nm of 1.4 equals 1.0 mg of IgG.</p>	
<b>Alternative Names:</b>	AF9, AF-9, ALL1 Fused Gene from Chromosome 9 Protein, MLLT3, MLLT-3, Myeloid/Lymphoid or Mixed-Lineage Leukemia Translocated 3, YEATS3, YEATS-3.	
<b>Country of Origin:</b>	USA	
<b>Notes:</b>	<p>Centrifuge microtube to remove product from lid.</p> <p>For in vitro laboratory use only. Not for any clinical, therapeutic, or diagnostic use in humans or animals. Not for animal or human consumption.</p> <p><b>This product may not be resold or modified for resale without the prior written approval of Bethyl Laboratories, Inc.</b></p>	
<b>Related Products:</b>	AF9 Blocking Peptide BP2310 R anti-AF9 Antibody BL2311 R anti-AF9 Antibody BL2313	BP300-595 A300-596A A300-597A

## AF9 Antibody (BL2310)

Bethyl Laboratories, Inc.

**Cat. No.**  
A300-595A

**Reactivity:** Human. Other species have not been tested. Reactivity with mouse AF9 is likely owing to complete identity of sequence between this ortholog and human AF9 at the site to which the epitope maps.

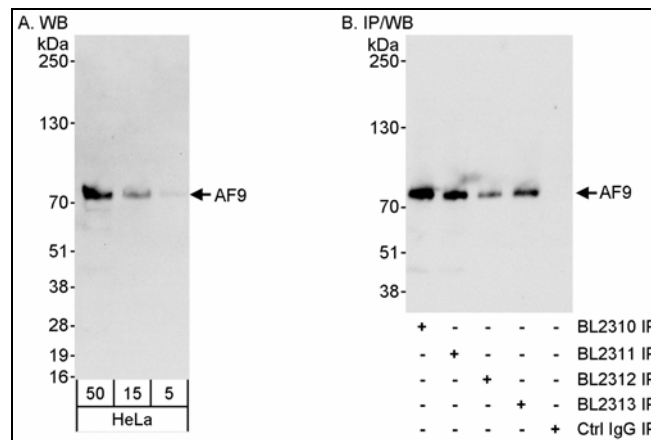
**Applications:** Optimal working dilutions should be determined experimentally by the investigator. Prepare working dilution immediately before use. Suggested starting dilutions are as follows.

Western Blot: 1:2,000 – 1:10,000

Immunoprecipitation: 1 to 4 mcg/mg of lysate

IHC/ICC/IF: not tested

In some cases, the antibody may be diluted further than indicated.



**Detection of Human AF9 by Western Blot and Immunoprecipitation.** *Samples:* Whole cell lysate (5, 10 and 50 mcg for WB; 1 mg for IP, 20% of IP loaded) from HeLa cells. *Antibodies:* Affinity purified rabbit anti-AF9 antibody BL2310 (Cat. No. A300-595A) used for WB at 0.04 mcg/ml (A) and 1 mcg/ml (B), and used for IP at 3 mcg/mg lysate. AF9 was also immunoprecipitated using rabbit anti-AF9 antibodies BL2311 (Cat. No. A300-596A), BL2312 and BL2313 (Cat. No. A300-597A) at 3 mcg/mg lysate. For detecting immunoprecipitated AF9, ReliaBLOT™ reagents and procedures were used. *Detection:* Chemiluminescence with exposure times of 30 seconds (A and B).

**AF9 Antibody (BL2310)**  
*Affinity Purified*

*Produced in Rabbit*

**Catalog No.**  
A300-595A



---

## MATERIAL SAFETY DATA SHEET

### Contents Description

This product contains rabbit immunoglobulin G (IgG) protein in Tris-buffered Saline containing 0.1 % BSA and 0.09% Sodium Azide.

### Hazardous Ingredients

Rabbit IgG Protein - No known toxicity for this biological material.

Bovine Serum Albumin (BSA) - No known toxicity for this biological material.

Sodium Azide ( $\text{NaN}_3$ ) - AZIDE FORMS EXPLOSIVE CHEMICAL COMPOUNDS WITH LEAD AND COPPER PLUMBING. CARE MUST BE TAKEN TO WASH WASTE DOWN DRAINS WITH LARGE VOLUMES OF WATER.  
LD50 oral mouse - 27 mg/kg.

Wash all affected areas with large volumes of water and if swallowed consult your physician immediately.

The above information is believed to be correct but does not purport to be all-inclusive and is intended to be used only as a guide. Bethyl Laboratories, Inc. shall not be liable or responsible in any way for use of either this information or the material supplied. Disposal of hazardous material may be subject to federal, state, or local laws or regulations.