

Phospho RPS6 (S235/S236) Antibody (BL2656)

Affinity Purified

Produced in Rabbit

Catalog No.
A300-584A



Storage:	2 - 8 ⁰ C	
Amount:	0.1 ml at 0.2 mg/ml	
Buffer:	Tris-buffered Saline containing 0.1% BSA and 0.09% Sodium Azide	
Shelf life:	1 year from date of receipt	
Production Procedures:	<p>Antibody was affinity purified using a synthetic peptide representing phosphorylation at serine 235 and serine 236 and surrounding residues of RPS6 immobilized on solid support.</p> <p>Immunogen for A300-584A was a phosphorylated synthetic peptide, which represented a portion of human Ribosomal Protein S6 (GeneID 6194) around serine 235 and serine 236 according to the numbering given in entry NP_001001.2.</p> <p>Antibody concentration was determined by extinction coefficient: absorbance at 280 nm of 1.4 equals 1.0 mg of IgG.</p>	
Alternative Names:	S6, RPS6, Ribosomal Protein S6, Phosphoprotein NP33.	
Country of Origin:	USA	
Notes:	<p>Centrifuge microtube to remove product from lid.</p> <p>For in vitro laboratory use only. Not for any clinical, therapeutic, or diagnostic use in humans or animals. Not for animal or human consumption.</p> <p>This product may not be resold or modified for resale without the prior written approval of Bethyl Laboratories, Inc.</p>	
Related Products:	Phospho RPS6 (S235/S236) Blocking Peptide BP2656	BP300-584
	R anti-phospho RPS6 (S235) Antibody BL2654	A300-583A
	R anti-RPS6 Antibody BL2651	A300-556A
	R anti-RPS6 Antibody BL2653	A300-557A

Phospho RPS6 (S235/S236) Antibody (BL2656)

Bethyl Laboratories, Inc.

Cat. No.
A300-585A

Reactivity: Human. Other species have not been tested.

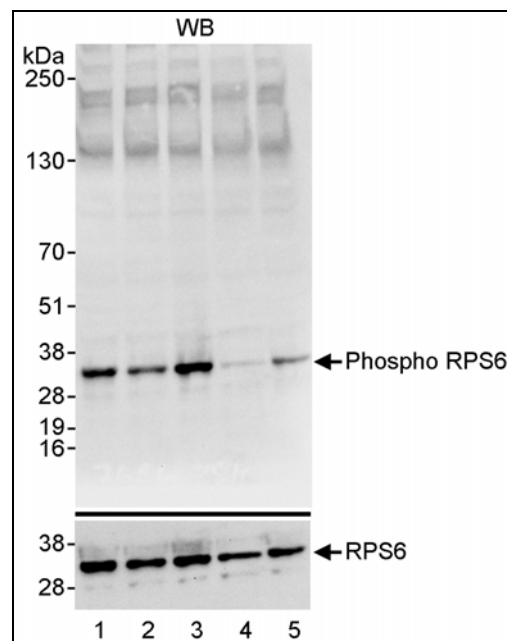
Applications: Optimal working dilutions should be determined experimentally by the investigator. Prepare working dilution immediately before use. Suggested starting dilutions are as follows.

Western Blot: 1:2,500 – 1:10,000

Immunoprecipitation: not tested

IHC/ICC/IF: not tested

In some cases, the antibody may be diluted further than indicated.



Detection of Human Phospho RPS6 (S235/S236) by Western Blot. *Samples:* Whole cell lysate (35 mcg) from HeLa cells. Treatments consisted of growth in serum containing media (lane 1) or cultured for 24 hours in serum free media (lanes 2 to 5). At 24h, serum was replaced for 1 h (lanes 2 and 3) or serum starvation was continued (lanes 4 and 5) without rapamycin (lanes 3 and 5) with 50nM Rapamycin (lanes 2 and 4). *Antibodies:* Affinity purified rabbit anti-phospho RPS6 (S235/S236) antibody BL2656 (Cat. No. A300-584A) used at 0.04 mcg/ml (upper panel). The blot was stripped and re-blotted for total RPS6 using affinity purified rabbit anti-RPS6 antibody BL2653 (Cat. No. A300-557A) at 0.04 mcg/ml. *Detection:* Chemiluminescence with exposure times of 10 seconds (upper panel) or 30 seconds (lower panel).

Phospho RPS6 (S235/S236) Antibody (BL2656)
Affinity Purified

Produced in Rabbit

Catalog No.
A300-584A



MATERIAL SAFETY DATA SHEET

Contents Description

This product contains rabbit immunoglobulin G (IgG) protein in Tris-buffered Saline containing 0.1 % BSA and 0.09% Sodium Azide.

Hazardous Ingredients

Rabbit IgG Protein - No known toxicity for this biological material.

Bovine Serum Albumin (BSA) - No known toxicity for this biological material.

Sodium Azide (NaN_3) - AZIDE FORMS EXPLOSIVE CHEMICAL COMPOUNDS WITH LEAD AND COPPER PLUMBING. CARE MUST BE TAKEN TO WASH WASTE DOWN DRAINS WITH LARGE VOLUMES OF WATER.
LD50 oral mouse - 27 mg/kg.

Wash all affected areas with large volumes of water and if swallowed consult your physician immediately.

The above information is believed to be correct but does not purport to be all-inclusive and is intended to be used only as a guide. Bethyl Laboratories, Inc. shall not be liable or responsible in any way for use of either this information or the material supplied. Disposal of hazardous material may be subject to federal, state, or local laws or regulations.