

**p400 Antibody (BL1879)**  
**Affinity Purified**



Produced in Rabbit

**Catalog No.**    **Size**  
A300-541A    0.1 ml

**Conditions**

Storage: 2 - 8<sup>0</sup> C  
Antibody Concentration: 0.2 mg/ml  
Physical State: Liquid  
Buffer: Tris-buffered Saline containing 0.1% BSA  
Preservative: 0.09% Sodium Azide  
Shelf life: 1 year from date of receipt

**Production Procedures**

Antibody was affinity purified using an epitope specific to p400 immobilized on solid support.

The epitope recognized by A300-541A maps to a region between residues 3075 and the C-terminus (residue 3124) of human E1A binding protein p400 using the numbering given in entry AAK97789.1 (GeneID 57634).

Antibody concentration was determined by extinction coefficient: absorbance at 280 nm of 1.4 equals 1.0 mg of IgG.

**Notes**

Centrifuge tube to remove product from lid.  
Reactivity: Human. Other species have not been tested. Reactivity with mouse is expected owing to complete identity between this ortholog and human p400 at the site to which the epitope maps.  
Alternative Names: EP400, p400, E1A binding protein p400, TNRC12, TNRC-12, Trinucleotide Repeat Containing 12, CAGH32 protein.

Country of Origin: USA

For In vitro laboratory use only. Not for any clinical, therapeutic, or diagnostic use in humans or animals. Not for animal or human consumption.

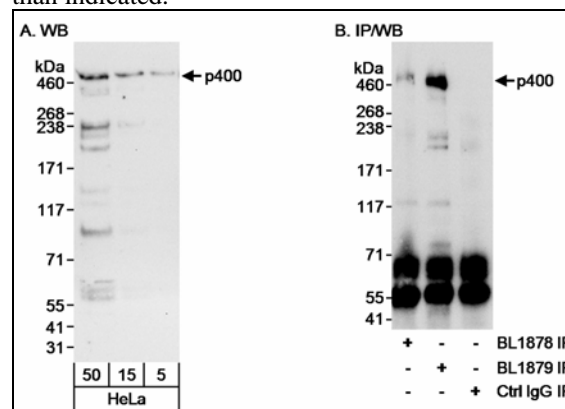
**This product may not be resold or modified for resale without the prior written approval of Bethyl Laboratories, Inc.**

**Applications**

Optimal working dilutions should be determined experimentally by the investigator. Prepare working dilution immediately before use. Suggested starting dilutions are as follows.

Western Blot: 1:2,000 – 1:5,000.  
Immunoprecipitation: 2 to 5 mcg/mg lysate.  
Histo/Cytochemistry: not tested.

In some cases, the antibody may be diluted further than indicated.



**Detection of Human p400 by Western Blot and Immunoprecipitation.** *Samples:* Whole cell lysate (5, 15 and 50 mcg for WB; 1 mg for IP, 1/4 of IP reaction loaded) from HeLa cells. *Antibodies:* Affinity purified rabbit anti-p400 antibody BL1879 (Cat. No. A300-541A) used at 0.04 mcg/ml for WB (A and B) and at 3 mcg/mg lysate for IP. Immunoprecipitation of p400 was also accomplished, albeit less efficiently, using rabbit anti-p400 antibody BL1878, which is to an upstream epitope on p400. *Detection:* Chemiluminescence with exposure times of 30 seconds (A) and 10 seconds (B).

**Related Products**

p400 Blocking Peptide BP1879                      BP300-541

**p400 Antibody (BL1879)**  
***Affinity Purified***

*Produced in Rabbit*

<b>Catalog No.</b>	<b>Size</b>
A300-541A	0.1 ml



## MATERIAL SAFETY DATA SHEET

### Contents Description

This product contains rabbit immunoglobulin G (IgG) protein in Tris-buffered Saline containing 0.1% BSA and 0.09% Sodium Azide ( $\text{NaN}_3$ ).

### Hazardous Ingredients

Rabbit IgG Protein - No known toxicity for this biological material.

Sodium Azide ( $\text{NaN}_3$ ) - AZIDE FORMS EXPLOSIVE CHEMICAL COMPOUNDS WITH LEAD AND COPPER PLUMBING. CARE MUST BE TAKEN TO WASH WASTE DOWN DRAINS WITH LARGE VOLUMES OF WATER.

LD50 oral mouse - 27 mg/kg.

Wash all affected areas with large volumes of water and if swallowed consult your physician immediately.

The above information is believed to be correct but does not purport to be all-inclusive and is intended to be used only as a guide. Bethyl Laboratories, Inc. shall not be liable or responsible in any way for use of either this information or the material supplied. Disposal of hazardous material may be subject to federal, state, or local laws or regulations.