

DDX1 Antibody (BL2422)

Affinity Purified



Produced in Rabbit

Catalog No. **Size**
A300-521A 0.1 ml

Conditions

Storage: 2 - 8⁰ C

Antibody Concentration: 0.2 mg/ml

Physical State: Liquid

Buffer: Tris-buffered Saline containing 0.1% BSA

Preservative: 0.09% Sodium Azide

Shelf life: 1 year from date of receipt

Production Procedures

Antibody was affinity purified using an epitope specific to DDX1 immobilized on solid support.

The epitope recognized by A300-521A maps to a region between residue 650 and the C-terminus (residue 697) of human DEAD (Asp-Glu-Ala-Asp) Box Polypeptide 1 using the numbering given in entry AAH12739.1 (GeneID 1653).

Antibody concentration was determined by extinction coefficient: absorbance at 280 nm of 1.4 equals 1.0 mg of IgG.

Notes

Centrifuge tube to remove product from lid.

Reactivity: Human. Other species have not been tested. Reactivity with mouse DDX1 is expected owing to identity of sequence between this ortholog and human DDX1 at the site to which the epitope maps.

Alternative Names: DDX1, DEAD (Asp-Glu-Ala-Asp) box polypeptide 1, DBP-RB, DEAD Box Protein-Retinoblastoma.

Country of Origin: USA

For In vitro laboratory use only. Not for any clinical, therapeutic, or diagnostic use in humans or animals. Not for animal or human consumption.

This product may not be resold or modified for resale without the prior written approval of Bethyl Laboratories, Inc.

Applications

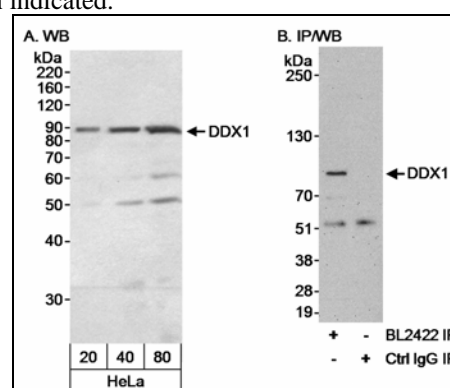
Optimal working dilutions should be determined experimentally by the investigator. Prepare working dilution immediately before use. Suggested starting dilutions are as follows.

Western Blot: 1:1,000 – 1:10,000.

Immunoprecipitation: 3 to 5 mcg/mg lysate.

Histo/Cytochemistry: not tested.

In some cases, the antibody may be diluted further than indicated.



Detection of Human DDX1 by Western Blot and Immunoprecipitation. *Sample:* Whole cell lysate (20, 40 and 80 mcg for WB; 1 mg for IP, 1/4 of IP loaded) from HeLa cells. *Antibody:* Affinity purified rabbit anti-DDX1 antibody BL2422 (Cat. No. A300-521A) used at 0.03 mcg/ml for WB (A and B) and at 3 mcg/mg lysate for IP (B). *Detection:* Chemiluminescence with an exposure time of 1 minute.

Related Products

DDX1 Blocking Peptide BP2422	BP300-521
R anti-DDX1 Antibody BL2421	A300-520A
R anti-DDX3 Antibody BL1649	A300-474A
R anti-DDX3 Antibody BL1650	A300-475A
R anti-DDX3 Antibody BL1651	A300-476A
R anti-DDX5 Antibody BL2461	A300-522A
R anti-DDX5 Antibody BL2462	A300-523A
R anti-DDX6 Antibody BL2139	A300-460A
R anti-DDX6 Antibody BL2140	A300-461A
R anti-DICE1/DDX26 BL1015	A300-254A
R anti-DHX15 Antibody BL1627	A300-389A
R anti-DHX15 Antibody BL1628	A300-390A
G anti-Rabbit IgG-h+l FITC conjugated	A120-101F
G anti-Rabbit IgG-h+l HRP conjugated	A120-101P

DDX1 Antibody (BL2422)
Affinity Purified

Produced in Rabbit

Catalog No.	Size
A300-521A	0.1 ml



MATERIAL SAFETY DATA SHEET

Contents Description

This product contains rabbit immunoglobulin G (IgG) protein in Tris-citrate/phosphate buffer, pH 7 to 8 with 0.1% Sodium Azide (NaN_3).

Hazardous Ingredients

Rabbit IgG Protein - No known toxicity for this biological material.

Sodium Azide (NaN_3) - AZIDE FORMS EXPLOSIVE CHEMICAL COMPOUNDS WITH LEAD AND COPPER PLUMBING. CARE MUST BE TAKEN TO WASH WASTE DOWN DRAINS WITH LARGE VOLUMES OF WATER.

LD50 oral mouse - 27 mg/kg.

Wash all affected areas with large volumes of water and if swallowed consult your physician immediately.

The above information is believed to be correct but does not purport to be all-inclusive and is intended to be used only as a guide. Bethyl Laboratories, Inc. shall not be liable or responsible in any way for use of either this information or the material supplied. Disposal of hazardous material may be subject to federal, state, or local laws or regulations.