

# HIF1-alpha Antibody (BL1125)

## Affinity Purified



Produced in Rabbit

**Catalog No.**    **Size**  
A300-286A    0.1 ml

### Conditions

Storage: 2 - 8<sup>o</sup> C  
Antibody Concentration: 0.2 mg/ml  
Physical State: Liquid  
Buffer: Tris-buffered Saline containing 0.09% BSA  
Preservative: 0.09% Sodium Azide  
Shelf life: 1 year from date of receipt

### Production Procedures

Antibody was affinity purified using an epitope specific to HIF1-alpha immobilized on solid support.

The epitope recognized by A300-286A maps to a region between residues 775 and the C-terminus (residue 826) of human hypoxia-inducible factor 1, alpha subunit using the numbering given in Swiss-Prot entry Q16665 (GeneID 3091).

Antibody concentration was determined by extinction coefficient: absorbance at 280 nm of 1.4 equals 1.0 mg of IgG.

### Notes

Centrifuge tube to remove product from lid.

Reactivity: Human and mouse. Other species have not been tested.

Alternative Names: HIF1A, HIF1alpha, HIF1-alpha, hypoxia-inducible factor 1, alpha subunit (basic helix-loop-helix transcription factor), MOP1, member of PAS superfamily 1, PASD8.

Country of Origin: USA

For In Vitro laboratory use only. Not for any clinical, therapeutic, or diagnostic use in humans or animals. Not for animal or human consumption.

**This product may not be resold or modified for resale without the prior written approval of Bethyl Laboratories, Inc.**

### Applications

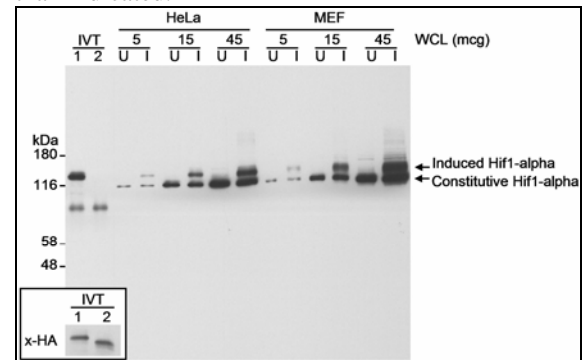
Optimal working dilutions should be determined experimentally by the investigator. Prepare working dilution immediately before use. Suggested starting dilutions are as follows.

Western Blot: 1:500 – 1:2,500

Immunoprecipitation: Does not appear to IP efficiently

Histo/Cytochemistry: not tested

In some cases, the antibody may be diluted further than indicated.



**Detection of Human and Mouse HIF1-alpha by Western Blot.** *Samples:* In vitro translated (IVT) human HIF1-alpha or human HIF2-alpha (each tagged with HA), and whole cell lysate (5, 15 and 45 mcg) from HeLa and MEF cells in which HIF1-alpha was uninduced (U) or induced (I). *Antibody:* Affinity purified rabbit anti-HIF1-alpha antibody BL1125 (Cat. No. A300-286A) used at 0.2 mcg/ml. *Detection:* Chemiluminescence with an exposure time of 4 seconds.

Additional Information: Upon longer exposure (4 minutes), BL1125 detected in vitro translated HIF2-alpha. The crossreactivity of BL1125 with HIF2-alpha is estimated to be <1%. In samples that are devoid of HIF1-alpha, one must be cautious not to misinterpret a HIF2-alpha signal as HIF1-alpha. HIF1-alpha was induced using 1% oxygen for 3 h. Up-regulation of HIF1-alpha is transient with levels decreasing after 8 h and returning to near baseline after 24 h in 1% oxygen.

### Related Products

G anti-Rabbit IgG-h+l FITC conjugated	A120-101F
G anti-Rabbit IgG-h+l HRP conjugated	A120-101P
HIF1-alpha Blocking Peptide BP1125	BP300-286

**HIF1-alpha Antibody (BL1125)**  
*Affinity Purified*

*Produced in Rabbit*

**Catalog No.**    **Size**  
A300-286A    0.1 ml



## MATERIAL SAFETY DATA SHEET

### Contents Description

This product contains rabbit immunoglobulin G (IgG) protein in Tris-citrate/phosphate buffer, pH 7 to 8 with 0.1% Sodium Azide ( $\text{NaN}_3$ ).

### Hazardous Ingredients

Rabbit IgG Protein - No known toxicity for this biological material.

Sodium Azide ( $\text{NaN}_3$ ) - AZIDE FORMS EXPLOSIVE CHEMICAL COMPOUNDS WITH LEAD AND COPPER PLUMBING. CARE MUST BE TAKEN TO WASH WASTE DOWN DRAINS WITH LARGE VOLUMES OF WATER.

LD50 oral mouse - 27 mg/kg.

Wash all affected areas with large volumes of water and if swallowed consult your physician immediately.

The above information is believed to be correct but does not purport to be all-inclusive and is intended to be used only as a guide. Bethyl Laboratories, Inc. shall not be liable or responsible in any way for use of either this information or the material supplied. Disposal of hazardous material may be subject to federal, state, or local laws or regulations.