



ANTIGEN PROTEIN

For research use only. Not for clinical diagnosis.

Catalog No. BCL-AG-001

Hepatitis B Virus Surface Antigen (HBsAg), L-protein (Recombinant)

BACKGROUND

Hepatitis B virus (HBV) expresses three types of surface antigens, i.e. S-, M-, and L-protein. L-protein is composed of S-, Pre-S2, and Pre-S1 region. The deletion of Pre-S1 region forms M-protein, and further deletion of Pre-S2 region results in S-protein. Most of commercially available HBsAgs is composed of either S-protein alone or S- plus M-proteins. This product, HBsAg, L-protein contains all the three components in one protein.

The Pre-S1 region is known to be the hepatic cell recognition site and to be important in the HBV infection. Thus, the product can be used as a mimic HBV for immunological studies or as a tool for studying infection mechanism.

Source	Yeast (Saccharomyces cerevisiae)
Appearance	Lyophilized white powder
Activity	Pre-S1 activity is more than 1000 units (Unit are arbitrary scale determined in Beacle using Pre-S1 detecting ELISA system)
Structure	Nano size particles having antigen protein floating in lipid bilayer. The mean particle size is 60 to 70nm as determined dynamic light scattering methods (20 nm as determined by electron microscopy)
Content	100 µg (dissolving instruction: added 500 µL of water to 100 µg of lyophilized powder, that makes antigen concentration of 0.2 mg/mL in PBS (137mM NaCl, 8.1mM Na ₂ HPO ₄ •12H ₂ O, 2.68mM KCl, 1.47mM KH ₂ PO ₄ , pH 7.2 - 7.4) containing 1% sucrose
Purity	over 95% (see SDS-PAGE data)
Storage	-20°C (stable for over 24 months)

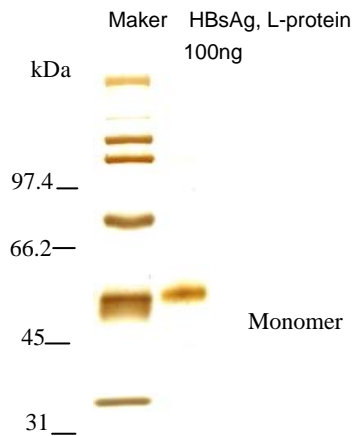


Fig. SDS-PAGE with silver staining

RELATED PRODUCT

BCL-AB-001 Anti HBV Pre-S1 antibody, mouse mono-1

BCL-AB-002 Anti HBV Pre-S1 antibody, mouse mono-2

For research use only. Not for clinical diagnosis.

Manufactured by  **Beacle, Inc.**



COSMO BIO Co., LTD.

Inspiration for Life Science

TOYO 2CHOME, KOTO-KU, TOKYO, 135-0016, JAPAN

URL: <http://www.cosmobio.co.jp>

e-mail: export@cosmobio.co.jp

[Outside Japan] Phone : +81-3-5632-9617

[国内連絡先] Phone : +81-3-5632-9610

FAX : +81-3-5632-9618

FAX : +81-3-5632-9619