



COSMO BIO CO., LTD.

Inspiration for Life Science

POLYCLONAL ANTIBODY

Catalog No. CB-BCRS1R

Human/bovine alpha/beta Crystallin (whole molecule)

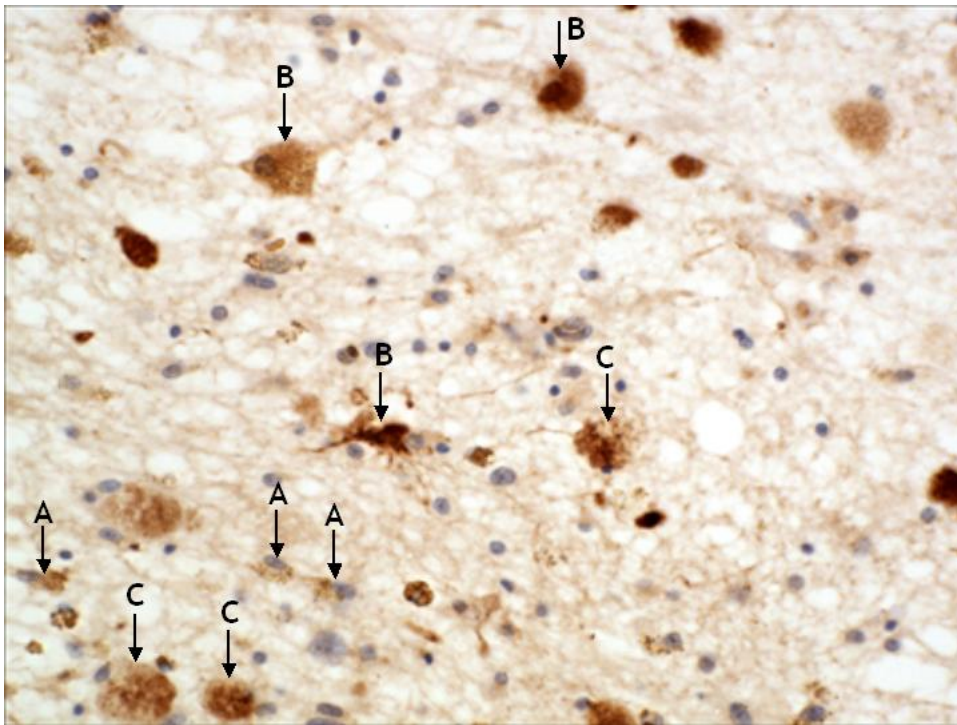
| | |
|-------------------------------|----------------------------------------------------------------------------------------------------|
| Product type | Primary antibodies |
| Host | Rabbit |
| Source | Serum |
| Form | Lyophilized powder |
| Volume (Concentration) | Filtered lyophilized serum containing 0.02% thimerosal. 0.1 mL |
| Specificity | Human/bovine alpha/beta Crystallin |
| Antigen | Bovine alpha/beta crystallin which has greater than 80% homology with human alpha/beta crystallin. |
| Isotype | IgG |

| | |
|--------------------------|--------------------------------------------------------------------------------------------------------------------------------------------------------------------------------------------------------------------------------------------------------------------------------------------------------------------------------------------------------------------------------------------------------------------------------------------------------------------------------------------------------------------------------------------------------------------------------------------------------------|
| Application notes | IHC(f), IHC(p), IF, Light microscopy Recommended use Immunohistochemistry on frozen or wax embedded tissue. Antigen retrieval has been used in characterisation but may not be necessary. Recommended dilutions Light microscopy 1/1000 to 1/4000 depending on tissue and detection method; Immunohistochemistry 1/2000 Immunofluorescence 1/100 to 1/400. Optimal dilutions/concentrations should be determined by the end user. Staining Pattern Stains Rosenthal fibre accumulation in astrocytes in human neurological trauma. (see attached images) |
| Cross reactivity | Bovine, Human |
| Storage | Reconstitute with 0.1ml of sterile distilled water. Re-aliquot into smaller volumes and freeze at -20°C or lower. Store working volume at 4°C. Avoid freeze thawing. |
| References | |

For research use only. Not for clinical diagnosis.



A human neurological case showing abundant accumulation of $\alpha\beta$ crystallin (Cat # BcrysRA) in astrocytes in what are termed Rosenthal fibres.



Legend: $\alpha\beta$ crystallin staining of human brain tissue showing $\alpha\beta$ crystallin accumulation in Rosenthal fibres. Primary antibody 1/2000 of (Cat #, BcrysRA), Secondary antibody biotinylated Goat anti-rabbit (1/2000), Vector ABC, substrate DAB. (A) Shows the early stages of $\alpha\beta$ crystallin accumulation in astrocytes, (B) astrocyte begins to hypertrophy with $\alpha\beta$ crystallin accumulation, (C) the astrocyte begins to further hypertrophy and cell structure is lost.



COSMO BIO CO., LTD.

Inspiration for Life Science

TOYO 2CHOME, KOTO-KU, TOKYO, 135-0016, JAPAN

URL: <http://www.cosmobio.co.jp>

e-mail: export@cosmobio.co.jp

[Outside Japan] Phone : +81-3-5632-9617

[国内連絡先] Phone : +81-3-5632-9610

FAX : +81-3-5632-9618

FAX : +81-3-5632-9619