

Monoclonal Antibody to ApoM

Cat. #: Mab-606113

Description:

Apolipoprotein M (ApoM) is a member of the lipocalin protein family. It is found associated with high density lipoproteins and to a lesser extent with low density lipoproteins and triglyceride-rich lipoproteins. It is positively related to leptin. It is mainly expressed in liver and kidney. ApoM is secreted through the plasma membrane but remains membrane-bound, where it is involved in lipid transport. It is important for the formation of prebeta-HDL and cholesterol efflux to HDL, and thereby inhibits formation of atherosclerotic lesions.

Immunogen/Specificity:

TRX purified full length recombinant ApoM-GST expressed in E. Coli strain BL21 (DE3).

Applications :

Western Blot: 1: 500- 1: 1,000

IF: 1: 200- 1: 1,000

ELISA: Propose dilution 1: 10,000.

Determining optimal working dilutions by titration test.

Formulation

Antibodies are purified by protein A affinity chromatography

Reference:

1. Xu,N. & Dahlback,B.1999. J. Biol. Chem. 274 (44):31286-31290
2. Christian Wolfrum, Matthew N Poy & Markus Stoffel. 2005. Nat Med. 11(4):418-22.
3. Xu,N., Nilsson-Ehle,P. & Ahren,B. 2004. J. Nutr. Biochem. 15 (10):579-582
4. Zhang,X.Y. ,et al.2004. Acta Histochem. 106 (2):123-128

Clone Number: 10C3G5

Isotype: IgG2a

Species: Human

Storage and Stability: stored at -20 C

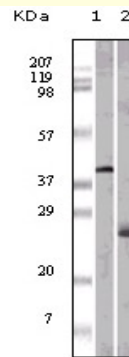
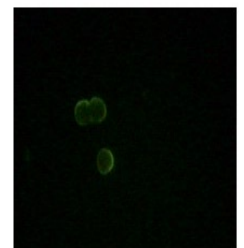


Figure 1: Western blot analysis using anti-Human ApoM monoclonal antibody against recombinant ApoM - GST (lane 1) and human serum (lane 2) .



L-02 cells



COS-7 cells

Figure 2: immunofluorescence analysis of L-02 cells and COS-7 cells, showing cytoplasmic localization using ApoM-GST antibody.