

# Monoclonal Antibody to SNCA

Cat. #: Mab-606058

## Description:

Alpha-synuclein (SNCA), with 140-amino acid protein (about 15kDa), belongs to the synuclein family, which also includes beta- and gamma-synuclein. SNCA is a soluble protein, expressed principally in the brain but also expressed in low concentrations in all tissues examined (except liver). SNCA is implicated in the regulation of dopamine release and transport. The triplication of the SNCA can cause Parkinson disease (PD) and diffuse Lewy body disease within the same kindred. SNCA peptides are a major component of amyloid plaques in the brains of patients with Alzheimer's disease. Immunohistochemistry for SNCA has become the histological technique of choice for the diagnosis for Parkinson's disease, Dementia with Lewy bodies and Multiple System Atrophy.

## Immunogen/Specificity:

Ni-NTA purified truncated recombinant SNCA expressed in E. Coli strain BL21 (DE3)

## Applications :

Western Blot: 1: 500- 1: 2,000

IHC(P): 1: 500- 1: 2,000

IHC(F): 1: 500- 1: 2,000

ELISA: Propose dilution 1: 10,000

Determining optimal working dilutions by titration test.\*

## Formulation

Crude ascites.

## References

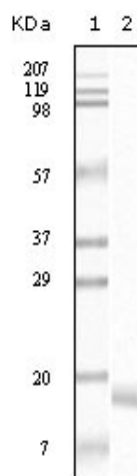
1. J. Johnson, S. M. Hague, M. Hanson  
Neurology, Aug 2004; 63: 554 - 556
2. Hong Tao Li, Xiao Jing Lin, Yuan Yuan Xie  
Protein Pept Lett. 2006;13(4):385-90.

Clone Number: 2B2D1, 2B2A11

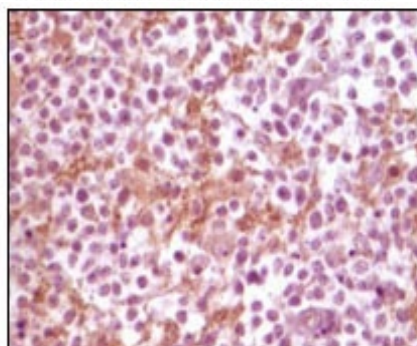
Isotype:

Species: Human


Storage and Stability: at -20oC



**Figure 1:** Western blot analysis using anti-human SNCA monoclonal antibody against truncated SNCA recombinant protein.



**Figure 2:** Immunohistochemical analysis of paraffin-embedded human glioma tissue, showing membrane localization, using SNCA antibody with DAB staining.

 コスモ・バイオ株式会社