

# Monoclonal Antibody to GAPDH

Cat. #: Mab-605079 (0.1mg)

## Description:

Glyceraldehyde-3-phosphate dehydrogenase (GAPDH) is well known as one of the key enzymes involved in glycolysis. It catalyzes an important energy-yielding step in carbohydrate metabolism, the reversible oxidative phosphorylation of glyceraldehyde-3-phosphate in the presence of inorganic phosphate and nicotinamide adenine dinucleotide (NAD). The enzyme exists as a tetramer of identical chains. Besides its functioning as a glycolytic enzyme in cytoplasm, recent evidence suggest that mammalian GAPDH is also involved in a great number of intracellular processes such as membrane fusion, microtubule bundling, phosphotransferase activity, nuclear RNA export, DNA replication, and DNA repair. During the last decade a lot of findings appeared concerning the role of GAPDH in different pathologies including prostate cancer progression, programmed neuronal cell death, age-related neuronal diseases, such as Alzheimer's and Huntington's disease.

## Immunogen/Specificity:

Ni-NTA purified recombinant human GAPDH expressed in E. Coli strain BL21 (DE3).

## Applications :

Western Blot: Dilution 1: 2,000- 3,000

ELISA: Propose dilution 1: 10,000

Determining optimal working dilutions by titration test.

## Formulation

Antibodies are purified by protein G affinity chromatography.

## Reference:

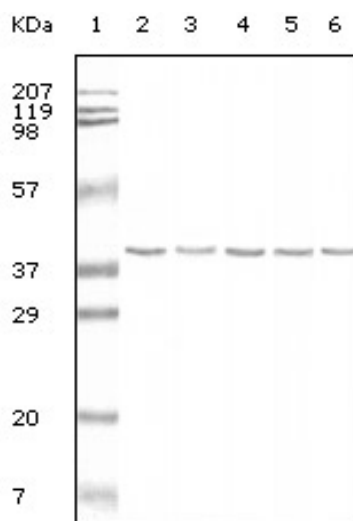
1. Allen R.W. J. Biol. Chem. 1987.262:649-653.
2. Sumner CJ. Ann Neurol 2003.54:6 47-54.  
1994.367: 417-418.

Clone Number: 2D4A7

Isotype: IgG1

Species: Human

Storage and Stability: stored at -20 C



**Figure 1:** Western blot analysis using anti-hGAPDH monoclonal antibody, against cell lysate (2: HeLa, 3: K562, 4: Jurkat, 5: NIH/3T3, 6: HepG-2).