

SHP-2 (Ab-580) Antibody

Cat. #: ANTY021320

Species: Human, Mouse, Rat

Quantity: 100ug

Concentration: 100ug/100ul

Storage and Stability:

Store at -20°C/1 year

Immunogen:

The antiserum was produced against synthesized non-phosphopeptide derived from human SHP-2 around the phosphorylation site of tyrosine 580 (R-V-YP-E-N).

Specificity:

SHP-2 (Ab-580) antibody detects endogenous levels of total SHP-2 protein.

Tested Application: WB and IHC

Application Notes: Rabbit IgG in phosphate buffered saline (without Mg²⁺ and Ca²⁺), pH 7.4, 150mM NaCl, 0.02% sodium azide and 50% glycerol.

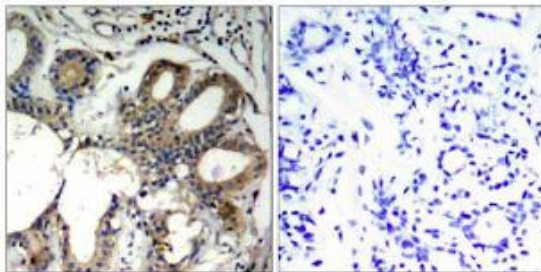
Raised In: Rabbit

Purity: The antibody was affinity-purified from rabbit antiserum by affinity-chromatography using epitope-specific immunogen.

Storage buffer:

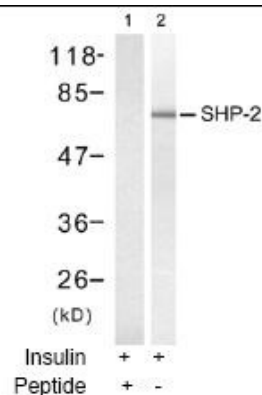
WB: 1:500~1:1000; IHC: 1:50-1:100

Form: Liquid



Peptide - +

Immunohistochemical analysis of paraffin-embedded human breast carcinoma tissue, using SHP-2 (Ab-580) antibody (#21320).



Western blot analysis of extracts from NIH/3T3 cells treated with insulin (100nM, 15min), using SHP-2 (Ab-580) antibody (#21320, Lane 1 and 2).

For research use only

Antagene, Inc. Toll Free: 1-866-964-2589, Fax: 1-888-225-1868, info@antageneinc.com,
www.antageneinc.com