

## Gab1 (Ab-627) Antibody

**Cat. #:** ANTY021283

**Species:** Human, Mouse

**Quantity:** 100ug

**Concentration:** 100ug/100ul

**Storage and Stability:**

Store at -20°C/1 year

**Immunogen:**

The antiserum was produced against synthesized non-phosphopeptide derived from human Gab1 around the phosphorylation site of tyrosine 627 (V-E-YP-L-D).

**Specificity:**

Gab1 (Ab-627) antibody detects endogenous levels of total Gab1 protein.

**Tested Application:** WB

**Application Notes:** Rabbit IgG in phosphate buffered saline (without Mg<sup>2+</sup> and Ca<sup>2+</sup>), pH 7.4, 150mM NaCl, 0.02% sodium azide and 50% glycerol.

**Raised In:** Rabbit

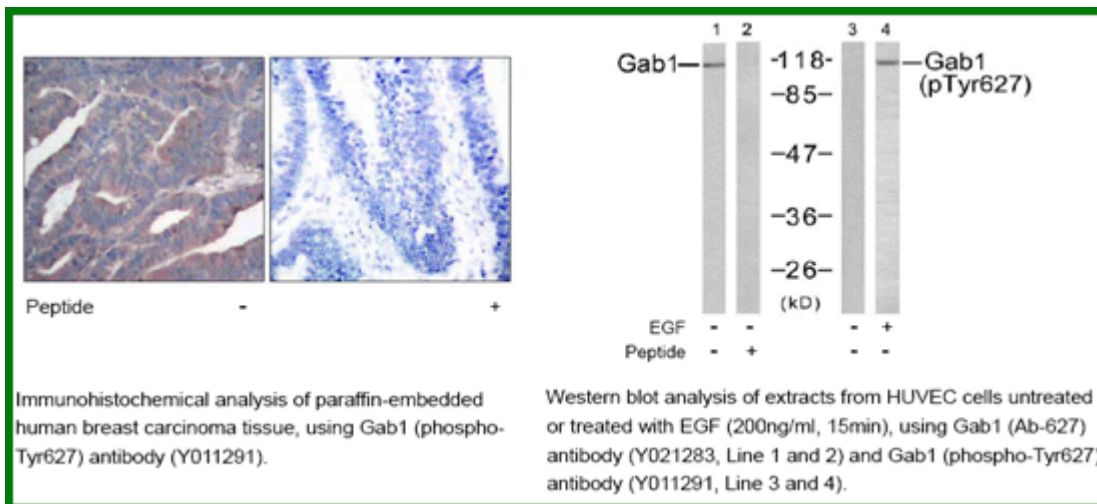
**Purity:** The antibody was affinity-purified from rabbit antiserum by affinity-chromatography using epitope-specific immunogen.

**Storage buffer:** WB: 1:500~1:1000

**Form:** Liquid

**Reference:**

Anders Kallin, et.al. (2004) J. Biol. Chem; 279: 17897 - 17904. Hideto Kameda, et.al. (2001) Cell Growth Differ; 12: 307. Masaki Osawa, et.al. (2002) J. Cell Biol; 158: 773.



**For research use only**

Antagene, Inc. Toll Free: 1-866-964-2589, Fax: 1-888-225-1868, [info@antageneinc.com](mailto:info@antageneinc.com),  
[www.antageneinc.com](http://www.antageneinc.com)