

## p62Dok (Ab-362) Antibody

**Cat. #:** ANTY021268

**Species:** Human, Mouse, Rat

**Quantity:** 100ug

**Concentration:** 100ug/100ul

**Storage and Stability:**

Store at -20°C/1 year

**Immunogen:**

The antiserum was produced against synthesized non-phosphopeptide derived from human p62Dok around the phosphorylation site of tyrosine 362 (P-I-YP-D-E).

**Specificity:**

p62Dok (Ab-362) antibody detects endogenous levels of total p62Dok protein.

**Tested Application:** WB and IHC

**Application Notes:** Rabbit IgG in phosphate buffered saline (without Mg<sup>2+</sup> and Ca<sup>2+</sup>), pH 7.4, 150mM NaCl, 0.02% sodium azide and 50% glycerol.

**Raised In:** Rabbit

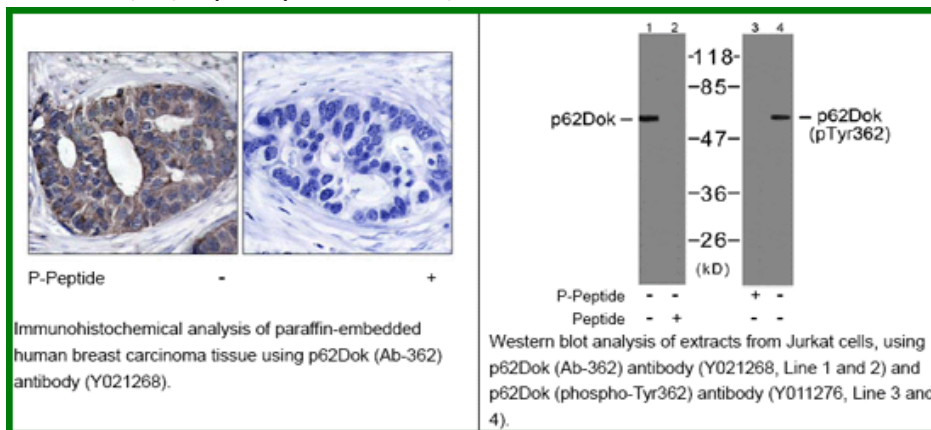
**Purity:** The antibody was affinity-purified from rabbit antiserum by affinity-chromatography using epitope-specific immunogen.

**Storage buffer:** WB: 1:500~1:1000 IHC: 1:50~1:100

**Form:** Liquid

**Reference:**

Zhou Songyang, et,al. (2001) J. Biol. Chem ; 276: 2459 - 2465. Jean-Guy Némorin, et,al.(2000) J. Biol. Chem ; 275: 14590. Yuji Yamanashi, et,al.(2000) Genes & Dev ; 14: 11. Ibuki Kato, et,al.(2002) J. Immunol ; 168: 629.



**For research use only**

Antagene, Inc. Toll Free: 1-866-964-2589, Fax: 1-888-225-1868, [info@antageneinc.com](mailto:info@antageneinc.com), [www.antageneinc.com](http://www.antageneinc.com)