

BRCA1 (Ab-1423) Antibody

Cat. #: ANTY021234

Species: Human

Quantity: 100ug

Concentration: 100ug/100ul

Storage and Stability:

Store at -20°C/1 year

Immunogen:

The antiserum was produced against synthesized non-phosphopeptide derived from human BRCA1 around the phosphorylation site of serine 1423 (H-G-SP-Q-P).

Specificity:

BRCA1 (Ab-1423) antibody detects endogenous levels of total BRCA1 protein.

Tested Application: IHC

Application Notes: Rabbit IgG in phosphate buffered saline (without Mg²⁺ and Ca²⁺), pH 7.4, 150mM NaCl, 0.02% sodium azide and 50% glycerol.

Raised In: Rabbit

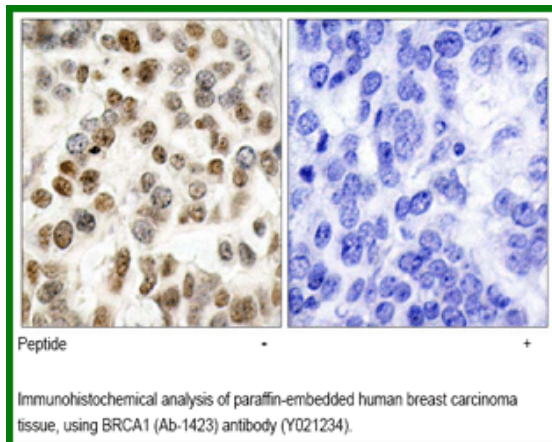
Purity: The antibody was affinity-purified from rabbit antiserum by affinity-chromatography using epitope-specific immunogen.

Storage buffer: IHC: 1:50~1:100

Form: Liquid

Reference:

Kim ST, et al. (2002) *Genes Dev*; 16(5): 560-570 Arlt MF, et al. (2004) *Mol Cell Biol*; 24(15): 6701-6709 Zhang J, et al. (2004) *Mol Cell Biol*; 24(2): 708-718 Greenberg RA, et al. (2006) *Genes Dev*; 20(1): 34-46 Tibbetts RS, et al. (2000) *Genes Dev*; 14(23): 2989-3002



For research use only

Antagene, Inc. Toll Free: 1-866-964-2589, Fax: 1-888-225-1868, info@antageneinc.com,
www.antageneinc.com