

Met (Ab-1349) Antibody

Cat. #: ANTY021230

Species: Human, Mouse and Rat

Quantity: 100ug

Concentration: 100ug/100ul

Storage and Stability:

Store at -20°C/1 year

Immunogen:

The antiserum was produced against synthesized non-phosphopeptide derived from human Met around the phosphorylation site of tyrosine 1349 (E-H-YP-V-H).

Specificity:

Met (Ab-1349) antibody detects endogenous levels of total Met protein.

Tested Application:

WB

Application Notes: Rabbit IgG in phosphate buffered saline (without Mg²⁺ and Ca²⁺), pH 7.4, 150mM NaCl, 0.02% sodium azide and 50% glycerol.

Raised In: Rabbit

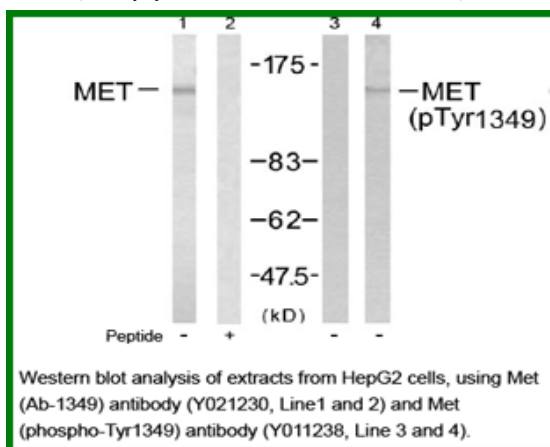
Purity: The antibody was affinity-purified from rabbit antiserum by affinity-chromatography using epitope-specific immunogen.

Storage buffer: WB: 1:500~1:1000

Form: Liquid

Reference:

Fan S, et al. (2001) Mol Cell Biol; 21(15): 4968-4984 Schiering N, et al. (2003) Proc Natl Acad Sci U S A; 100(22): 12654-12659 Plopper GE, et al. (1995) Mol Biol Cell; 6(10): 1349-1365 Ponzetto C, et al. (1993) Mol Cell Biol; 13(8): 4600-4608 Jackson PA, et al. (2001) Plant Physiol; 127(3): 1065-1076



For research use only

Antagene, Inc. Toll Free: 1-866-964-2589, Fax: 1-888-225-1868, info@antageneinc.com, www.antageneinc.com