

MEK1 (Ab-221) Antibody

Cat. #: ANTY021175

Species: Human, Mouse and Rat

Quantity: 100ug

Concentration: 100ug/100ul

Storage and Stability:

Store at -20°C/1 year

Immunogen:

The antiserum was produced against synthesized non-phosphopeptide derived from human MEK1 around the phosphorylation site of serine 221 (A-N-SP-F-V).

Specificity:

MEK1 (Ab-221) antibody detects endogenous levels of total MEK1 protein.

Tested Application: WB and IHC

Application Notes: Rabbit IgG in phosphate buffered saline (without Mg²⁺ and Ca²⁺), pH 7.4, 150mM NaCl, 0.02% sodium azide and 50% glycerol.

Raised In: Rabbit

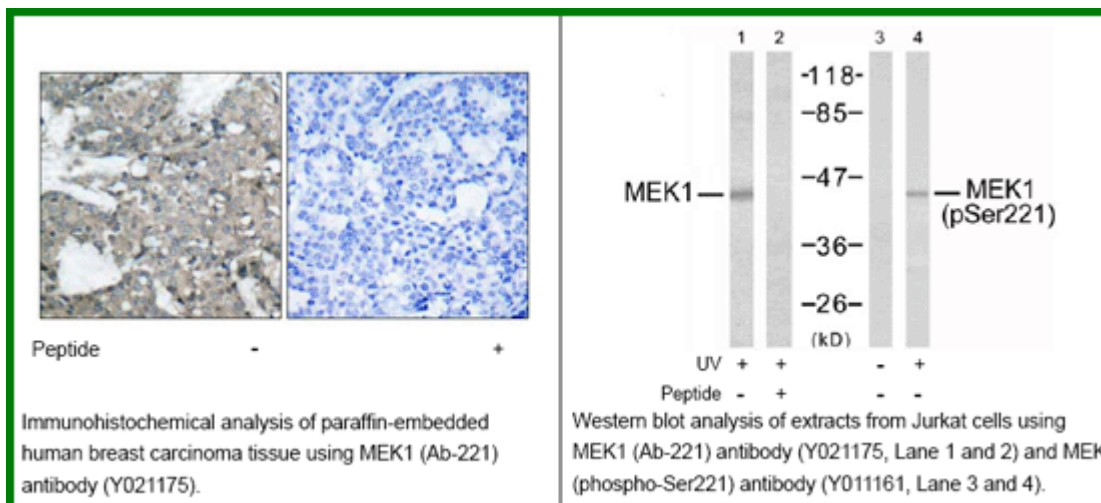
Purity: The antibody was affinity-purified from rabbit antiserum by affinity-chromatography using epitope-specific immunogen.

Storage buffer: WB: 1:500~1:1000 IHC: 1:50~1:100

Form: Liquid

Reference:

Zebisch A, et al. (2006) *Cancer Res*; 66(7): 3401-8. Luciano BS, et al. (2006) *J Biol Chem*; 279(50): 52117-23. Wang X, et al. (2003) *Oncogene*; 22(1): 109-16. Gopalbhai K, et al. (2003) *J Biol Chem*; 278(10): 8118-25. Ling MT, et al. (2002) *Oncogene*; 21(55): 8498-505.



For research use only

Antagene, Inc. Toll Free: 1-866-964-2589, Fax: 1-888-225-1868, info@antageneinc.com,
www.antageneinc.com